



INSIDE WLJ

LAB-GROWN MEAT ADVANCES
— Upside Foods, a cultured animal cell meat company, has become the first company of its kind to complete a pre-market consultation with the Food and Drug Administration. **Page 4**

CATTLE ON FEED LOWER — The latest Cattle on Feed report revealed that feedlot inventories have decreased and are expected to continue this decline year over year, reflecting the declining cattle supplies since 2019. **Page 13**

A LOOK BACK IN HISTORY
Although many Americans' economic situations are tightening due to the rising costs of everyday goods, demand for beef remains high. However, during an economic downturn in 2009, demand was the key issue, as this Nov. 30, 2009, *WLJ* article describes: "The decline in beef demand is the biggest challenge facing the industry. A 2-3 percent drop in beef demand was expected this year due to the global economic woes. Instead, the falloff has been much more dramatic, especially in the wholesale sector where year-to-year demand was down 10 percent to 15 percent over the period from July through September. Industry sources say total food service industry traffic is at its lowest point in about three decades."

INDEX

- OpinionP-2
- Story ShortsP-9
- Sale ReportsP-11
- MarketsP-12
- ClassifiedsP-14



USDA Natural Resources Conservation Service
The U.S. Fish and Wildlife Service is listing two distinct population segments of the lesser prairie chicken under the Endangered Species Act. Pictured here, a male lesser prairie chicken.

USFWS lists lesser prairie chicken on ESA

— Industry scorns decision

After a "rigorous review of the best available scientific and commercial information," despite conservation efforts by landowners, the U.S. Fish and Wildlife Service (USFWS) is listing two distinct population segments (DPS) of the lesser prairie chicken under the Endangered Species Act (ESA).

The southern DPS, which includes populations in eastern New Mexico and across the southwest Texas Panhandle, would be listed as endangered. The northern DPS, which encompasses southeastern Colorado, south-central to western Kansas, western Oklahoma and the northeast Texas Panhandle, would be listed as threatened with a 4(d) rule that tailors protections for the bird.

"The lesser prairie-chicken's decline is a sign our native grasslands and prairies are in peril. These habitats support a diversity of wildlife and are valued for water quality, climate resilience, grazing, hunting and recreation," said USFWS Southwest Regional Director Amy Lueders.

"The Service continues to work with stakeholders to develop voluntary conservation agreements that will protect the lesser prairie-chicken and the native grasslands on which it depends while assuring that oil and gas and renewable energy development, ranching, agriculture and other activities continue."

According to USFWS, the 4(d) rule for the northern DPS allows farmers to continue agricultural activities on existing cultivated lands. In addition, it would include an exception for ranchers who follow a "prescribed grazing plan developed by a qualified party" and approved by USFWS. The 4(d) rule also provides an exception for implementing prescribed burning for grassland management.

The announcement was denounced by the oil and gas industry, the National Cattlemen's Beef Association (NCBA) and the Public Lands Council (PLC).

Executive Director of PLC and NCBA Natural Resources Kaitlynn Glover said in a statement

See ESA on page 10

Global beef outlook remains strong

A recent report from Rabobank, "Global Beef Quarterly Q4 2022: As the US Goes, So Goes the World," shared that while the global beef market remains solid, growing economic and supply-side pressures may change that.

Global beef production for the upcoming first quarter of 2023 is expected to be similar to 2022 levels, but the market should keep an eye on the U.S., Rabobank cautioned. The country is headed toward a downward production cycle, which will impact prices and trade distribution in the coming years.

Cattle prices are forecast to be generally favorable, supported by positive seasonal conditions and continued consumer demand, the report read. However, demand could soften, given high inflation and declining consumer confidence.

"We also see emerging supply-side dynamics that will influence

markets," said Angus Gidley-Baird, senior analyst in the Animal Protein sector at Rabobank. "The central question is whether beef markets are shaped more by demand-side or supply-side pressures as we head into 2023."

Global outlook

The bank's report said that while global beef markets appear benign on the surface, they may be hiding strong undercurrents and pressure building in the system. Global beef production is split by hemisphere, with northern countries mostly in a declining production phase and southern countries increasing production. In the last quarter of 2022 and the first quarter of 2023, Europe and U.S. production is expected to decline, while production in Australia, Brazil

See RABO on page 16

Rail strike continues to loom

— Strike possible in early December

Members of the Agricultural Transportation Working Group are warning Congress and the country to prepare for the potential threat of a rail strike or lockout, stating that it could "lead to shutdowns of rail-dependent facilities resulting in devastating consequences to our national and global food security."

An analysis from the Association of American Railroads (AAR) reports the losses from a rail strike could total \$2 billion per day of the strike.

The oncoming holiday season brings the highest volume of consumer demand across all industries, including the agriculture industry. Demand for staple items used in holiday meals increases the need for consistent shipments and deliveries to grocery stores and other suppliers.

Ag coalition encourages action

On Sept. 15, the Biden administration coordinated with the National Railway Labor Conference (NRLC) and 12 unions in an attempt to postpone a potential strike to allow for negotiations. In a Nov. 3 letter from the Agricultural Transportation Working Group—made up of 193 industry groups—to congressional leaders, it was noted that "two unions have voted to not ratify while members of four others continue to review the agreement," and the letter encouraged "swift action to avert a rail strike or lockout."

At the time of the letter's writing, the next potential rail shutdown was scheduled for Nov. 19, which created a very short window of time that Congress could act when they returned to session on Nov. 14.

A potential strike was postponed until early December, according to a statement by the Brotherhood of Maintenance of

Way Employees Division of the International Brotherhood of Teamsters.

The National Carriers' Conference Committee (NCCC, a group within NRLC that represents the railroad companies) said the four unions that have not fully resolved the bargaining round initially endorsed the agreements, but now at least three of those unions are threatening to strike if additional demands are not met.

All 12 railway unions must agree to their proposed contracts in order to prevent a rail strike, and the contracts are voted upon by the roughly 115,000 workers the unions represent. If one union decides to strike, all of the unions will honor the picket lines.

"Should the unions without ratified agreements remain unwilling to do so, they are expected to strike and Congress may need to intervene—just as it has in the past—to prevent disruption of the national rail system," NCCC said.

See RAIL STRIKE on page 6

Cash trade inactive over short week

The market traded optimistically over the holiday week, with green numbers on the board and high hopes for cash trade for the short week.

Live cattle futures were higher, with the December contract up \$1.05 to \$153.80 and the February contract up \$1.02 to \$156.42.

Cash trade through the holiday-shortened week was inactive, with only about 500 head sold by Tuesday afternoon. There was no market trend available. However, trade was expected to pick up further in the week. "There's a widespread consensus that cash cattle prices will be higher again this week as packers are pressured to continue to support the cash market as front-end supplies of cattle are thin and will only become thinner in the weeks ahead," said Elaine Kub, DTN contributing analyst, in her Tuesday midday comments.

Cash trade for the week ending Nov. 20 totaled 90,590 head. Live steers averaged \$153.04, and dressed steers averaged \$241.88.

The national weekly direct beef type price distribution for the week of Nov. 14 to Nov. 21 was the following on a live basis:

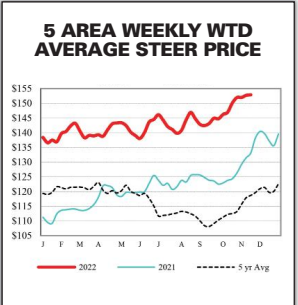
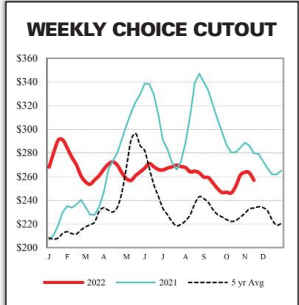
- Negotiated purchases: \$152.88.
- Formula net purchases: \$154.17.

- Forward contract net purchases: \$150.97.
 - Negotiated grid net purchases: \$154.47.
- On a dressed basis:
- Negotiated purchases: \$242.04.
 - Formula net purchases: \$245.20.
 - Forward contract net purchases: \$236.29.
 - Negotiated grid net purchases: \$244.74.

Slaughter through Tuesday totaled 257,000 head, on pace with a week earlier. Total slaughter for the week will be reduced due to the Thanksgiving holiday. Slaughter through Nov. 17 is expected to be 674,000 head.

See MARKETS on page 13

PERIODICAL: Time Sensitive Priority Handling



LIVE STEERS	DRESSED STEERS	CME FEEDER
N/A	N/A	\$174.64
WEEK ENDING: 11-22-22		

COMMENTS

Showing gratitude year-round

As Thanksgiving is now in our rear-view mirror, we most likely spent the last few days being grateful for all our blessings, family and friends. It makes me think that Thanksgiving shouldn't just be a holiday on one day



PATTERSON

in late November, one day where we exhibit gratitude for all things.

Now trust me, I do enjoy all the festivities that Thanksgiving brings: family together, 45-day dry-aged prime rib, pumpkin pie layered with whipped cream and a stomachache from laughter, followed by a busy Black Friday of breeding fall cows. Yet, when we truly define the meaning of "thanks," it's to "express gratitude, appreciation, or acknowledgment," and this shouldn't come just in the form of a few nice days in the fall. Being thankful is a year-round approach, and more importantly, in the agricultural business, it's an everyday feeling.

As producers, we have so much to be thankful for. First, the land that our homesteaders cultivated and made prosperous. Second, Mother Nature and the seasonality of weather patterns that bring us the nectar for what our businesses need to function. I know at times we do not receive the plentiful amount needed to have that spectacular year, but I don't think it's foolish to say it will always come in waves. Knowing us in the ag world, we are very used to working on the average and finding a way to be resilient in both good and bad years.

Labor—it's certainly a hot topic in all our lives today, and I feel it'll continue to be tenuous. However, we need to be grateful for our team and crews that work endlessly to make our businesses successful today. The old saying that "We are only as strong as our weakest member" is so true. So, in showing daily gratitude and loyalty to your team, you create that strong commitment to a hard work ethic and a desire to be better and to do more, which in turn, I am confident creates longer tenures.

We all are stewards of the land, our cattle, our programs and our products. Without these, we have nothing. Be appreciative of all, and let's give back to the resources. Our land is our foundation, and showing thanks here comes in so many ways: grass management, utilization of biological materials, grazing/resting, stock water locations and so on. Our cattle, our programs and our products form the nucleus of operational revenue, and we can show appreciation in many facets. Giving our cow herd the right base nutritional requirements for optimal performance, maximizing the genetic inputs into our herds and showcasing stewardship for the product we raise all contribute toward putting them in the right vehicle for success.

For me, acknowledgement to your customer may be the piece we miss out on the most. Without our customers, why be in the business? Customers come in many forms, whether it's buyers that offer competition in the market for price discovery or it's your neighbor you sell the first or third crop to in order to diversify your balance sheet. Most importantly, it's our consumers that love the taste of beef and know the importance of red meat protein in their diets. These are all our customers—the backbone of our success in the business—that we need to acknowledge daily and be thankful for.

I am very thankful for my great family, my upbringing, my cow herd, my friends and colleagues, and certainly all the folks that eat our product: beef. It simply is not enough to just show thanks on one holiday, once a year. Because what if our team, our resources, Mother Nature and our customers showed us gratitude, appreciation and acknowledgement on just one day? It's a scary thought. — **JARED PATTERSON**

OBITUARIES



Jack Rockford Tatum; 1931-2022

Jack Rockford Tatum, aged 91, lifelong resident of Bishop, CA, passed peacefully at home on Oct. 29.

Jack was born April 15, 1931, to L.L. Slim and Hazel Schober Tatum. Jack spent much of his childhood immersed in the family businesses, Frontier Pack Station and Pine Cone Dairy in the June Lake, CA, area. After the pack station sold, the Tatum family began acquiring cattle ranch leases, where Jack's profound love of cattle and horses blossomed.

Jack graduated from Bishop Union High School in 1949. Jack was a natural athlete and excelled in sports as a Bishop Bronco. Following graduation, he was recruited by the Pittsburgh Pirates as a left-handed pitcher. He played baseball from 1950-52. His professional baseball career was cut short when he was drafted into the U.S. Marines in 1952. Jack was stationed in El Toro, CA. It was there that Jack began courting Pat Reeves Dorrah, who he had met in Bishop earlier and worked at the nearby air base. After proposing with a ring buried in a ring box full of horse droppings, Jack and Pat were wed on June 7, 1954.

Following their marriage, the couple moved home to Bishop to join the family cattle and horse ranch. Once home, Jack and Pat were blessed with three children, Terry, Todd and Tani.

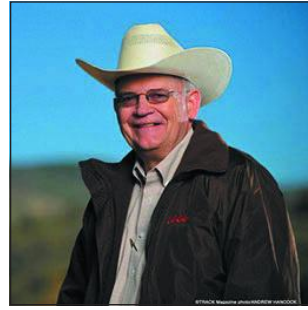
Jack was a true horseman with an affinity for breeding, calf roping and the cutting arena. Jack's career in the horse breeding industry began in 1946 when his family purchased a direct descendant of Wimpy P-1, the first registered Quarter Horse. Jack and the ST Ranch were recently given a prestigious award for 75-plus years breeding American Quarter Horses. Their horses have been instrumental for many local ranches and cowboys across the West for generations.

Jack also had a keen eye for business and acquired several parcels

of farmland in Iowa. He and Pat enjoyed annual cross-country adventures to their Iowa farms for years.

Jack is survived by his children, Terry (Jerry) Laird, Todd Tatum and Tani Tatum, all of Bishop; and grandchildren, Travis and Justin Laird. Jack is preceded in death by his parents, Slim and Hazel, and daughter-in-law, Lorraine "Lori" Tatum.

Donations in Jack's memory can be mailed to Bishop Union High School FFA at 301 N. Fowler St., Bishop, CA 93514.



Glenn 'Doc' Blodgett; 1948-2022

Dr. Glenn "Doc" Blodgett died Nov 20. Doc was a man of few words, with even fewer to waste. When it came to his profession, practice and passion, he deemed it best to keep it simple.

Glenn grew up in Spearman, TX, where his father farmed and ranched at the top of the Texas Panhandle. He married high school sweetheart Karen Wright, and both of the Blodgetts earned bachelor's degrees at Oklahoma State University. Glenn went on to get his veterinary degree at Texas A&M University, and today he is recognized as an outstanding alumnus by both universities.

Glenn served on the board of the American Association of Equine Practitioners and was the Texas Veterinary Medical Association's Equine Practitioner of the Year. He had been with the Four Sixes Ranch in Guthrie, TX, since 1982, overseeing the breeding of legendary stallions Dash For Cash, Special Effort, Streakin Six, Mr Jess Perry, One Famous Eagle, Tanquary Gin and many more. Glenn developed the Four Sixes into a mecca for broodmare owners, and the horses the cowboys rode there earned the ranch an American Quarter Horse Association (AQHA) Best Remuda Award.

A member of the Texas Horse Racing Hall of Fame, Glenn in 1988 was appointed to the first

Texas Horse Racing Commission, and during his tenure there, he received the Association of Racing Commissioners International's Joan Pew Award for Racing Commissioner of the Year. He was a trustee of the National Cutting Horse Association Foundation, and he was inducted into the Texas Cowboy Hall of Fame in 2019.

Glenn devoted the same time and energy to AQHA. He became a director in 1991 and director at large in 2011 and served on the AQHA Hall of Fame Committee and the Stud Book and Registration Committee, which he chaired for three years. In 2011, he took home the AQHA Racing Council Special Recognition Award. He was elected to the AQHA Executive Committee in 2012 and in 2015 became the 65th person to serve as the association's president.

Glenn stressed first and foremost the welfare of the horse. To further animal welfare, AQHA implemented the Multiple Medications Violations System and Animal Welfare Commission and now offers a multi-panel genetic disease test to help breeders make more informed breeding decisions.

He was inducted into the American Quarter Horse Hall of Fame in 2021.

Together for more than 50 years, Glenn and Karen have two daughters, Buffle Guynes and her daughters, Catherine, Rebecca and Clair; and Brandie (Mike) Mustain with son, Maddox, and daughter, Myla. — **AQHA**



Thomas David Bengard; 1937-2022

Thomas David Bengard, aged 85, passed away peacefully on Nov. 12, following a lengthy battle with Alzheimer's disease. He was surrounded by his family at his home on the ranch in Salinas, CA.

Tom was truly one of a kind. He was a successful entrepreneur and influential in both the produce and cattle industries. He had a reputation for being genuine, honest, fair and good to work with. Tom had an easy smile and a twinkle in his eye that made people feel comfortable, and his laugh was contagious. He was always on the go and looking for others to join him. Tom was dearly loved by his family and his friends, and he will be missed.

A lifelong resident of Monterey County, CA, Tom was born on May 3, 1937, in Bitterwater, CA, to Chris and Dorothy (Eade) Bengard. The family later moved to King City, CA, where Tom grew up with his two older brothers, Wesley and Darrel "Nick." Tom was active in 4-H, FFA, sports and the community.

Tom loved the outdoors, and he enjoyed hunting, fishing and riding around the ranch to check cattle with his family. As a young man, Tom worked alongside his brothers in the family's walnut orchard, and they also harvested grain. He developed a love for agriculture at an early age and decided that he wanted to pursue a career in it. After graduating from high school, Tom attended the University of California (UC), Davis, where he majored in agricultural

economics.

While at UC Davis, Tom joined the Phi Delta Theta fraternity, where he made many lifelong friends, most importantly Bruce Sconberg, who introduced him to his future wife. Terry Sconberg came to UC Davis in 1958, and she and Tom were soon a pair. They married on March 5, 1959, and they were together for over 60 years until her passing. Tom and Terry were partners in life, raising three children and starting a farming and ranching enterprise that kept them busy throughout their years.

After fulfilling his military obligations, Tom began his farming career in Salinas. He started out with field crops, growing beans, potatoes and beets. He had some success, and by the early 1970s, he was growing more high-value row crops, such as lettuce and broccoli. He formed Tom Bengard Ranch Inc. and became vertically integrated. He was chairman of the Grower-Shipper Vegetable Association, and he served on the board of the Western Growers Association for many years.

The cattle business was another endeavor that Tom and Terry pursued together. They started out with 150 cows in 1973 on the family's home ranch in Salinas. Over the years, they built it up to a commercial herd of 2,500 black Angus cows on ranches they purchased in Monterey, San Benito, Tehama, Shasta and Plumas counties in California and Klamath Falls, OR. In 2014, Tom was named Monterey County's Cattleman of the Year.

Tom loved the Western traditions that were a big part of his upbringing in the Salinas Valley. He enjoyed brandings, rodeos and being a member of Rancho Visitadores (RV), where he made many friends. While in RV, he served as camp captain for El Campo de Los Bustardos. The trail rides, parties and activities surrounding these events were some of the best of times.

Tom served on the Dean's Advisory Council for the UC Davis College of Agriculture, the UC Davis Chancellor's Club and the Cal Aggie Foundation.

The secret to Tom's success is that he had vision, a strong work ethic and good intuition, and he was able to take advantage of the opportunities that came his way. He was humble, friendly and honest, and he treated others with kindness and respect. In his later years, he mostly wanted to be with Terry and his family out enjoying the ranches that he was so proud of. These were great opportunities for him to share his wisdom and tell his stories. The conversation usually started out with "Let me tell ya something" and went on from there. He will be fondly remembered by his family for being kind, wise, humble, generous and fun!

Tom was preceded in death by his father and mother, Chris and Dorothy Bengard, and his brothers, Wesley and Darrel Bengard. He is survived by his children, Bardin (Pam) Bengard, Tracy (Paul) Pezzini and Tom (Louise) Bengard, all of Salinas; 10 grandchildren, Bridget (Chris) Rotticci, Bardin (Stephanie) Bengard, Sarah Bengard, Christian (Lucy) Bengard, Haley (Mason) Mallory, Wesley Pezzini, Michael Bengard, Jamie Bengard, Owen Bengard and Nick Bengard; and six great-grandchildren.

In lieu of flowers, the family asks that you make a donation in Tom's memory to the Alzheimer's Disease Research Foundation, UC Davis College of Agriculture, the California Rodeo or the Salinas Valley Fair Heritage Foundation.

HOOVES & HORNS BY A.W. ERWIN



"Maw said to brang home some milk,... I shore hope she's ready for a gallon of butter!"

WLJ

Letters to the editor: Letters for publication must be no longer than 675 words, must refer to an article that has appeared within the month, and must include the writer's name, address and phone number. Addresses and phone numbers will not be published. Letters may be shortened for space requirements. Send a letter to the editor by emailing editorial@wlj.net or mailing it to Western Livestock Journal, Attn: Editorial Dept., 7355 E. Orchard Road #300, Greenwood Village, CO 80111.

The national livestock weekly • Since 1922 • Western Livestock Journal LLC • 7355 E. Orchard Rd. #300, Greenwood Village, CO 80111
www.wlj.net • 303-722-7600 • Fax 303-722-0155



PRESIDENT	ADVERTISING@WLJ.NET	FIELD REPS	CIRCULATION@WLJ.NET
LOGAN IPSEN 4550 Elgin Rd., New Plymouth, ID 83655 916-947-2392 logan.ipsen@gmail.com	MIKE OLDICORN Advertising Coordinator & Graphic Design 720-370-9095 • mike@wlj.net TRISTAN MARTIN Advertising Coordinator & Graphic Design 720-372-1763 • tristan@wlj.net	JIM GIES 19381 WCR 74, Eaton, CO 80615 970-590-0500 jgies@msn.com DEVIN MURNIN P.O. Box 50381, Billings, MT 59105 406-696-1502 devin.murnin@gmail.com JARED PATTERSON 28140 Hop Rd., Caldwell, ID 83607 208-312-2386 jaredpatterson77@gmail.com	MOEDONE Production Manager & Copy Editor 720-370-8275 • moe@wlj.net NELSON CROW Founder FORREST BASSFORD Former Publisher DICK CROW Former Publisher PETE CROW Publisher Emeritus • pete@wlj.net
EDITORIAL@WLJ.NET ANNA MILLER Managing Editor 720-372-2353 • anna@wlj.net CHARLES WALLACE Editor 720-372-0955 • charles@wlj.net	CLASSIFIED@WLJ.NET TOM WHITE Real Estate Advertising Specialist 720-370-7977 • tom@wlj.net		

WESTERN LIVESTOCK JOURNAL (ISSN 0094-6710, USPS 678660) is published weekly (52 issues annually, plus special features) by Western Livestock Journal LLC, 7355 E. Orchard Rd. #300, Greenwood Village, CO 80111. Website: www.wlj.net. Email: advertising@wlj.net or editorial@wlj.net. U.S. subscription rates: 1 year - \$55, 2 years - \$85, 3 years - \$110. Single-copy price: \$1.50. Periodicals postage paid at Denver, CO, and at additional mailing offices. POSTMASTER: Send address changes to Western Livestock Journal, P.O. Box 370930, Denver, CO 80237-0930.



DID YOU LEAVE MONEY ON THE TABLE THIS YEAR WITH MEDIOCRE PRF INSURANCE COVERAGE?

Let Redd Summit Advisors optimize your PRF insurance coverage with our specialized software. In 10 minutes, we can show you 1,000,000 different coverage scenarios with 70 years of historical data to back it up.*

GET CONNECTED TO A PRF EXPERT WITHIN 5 MINUTES.

1-800-825-2355

 **REDD SUMMIT ADVISORS**

*Actual results may vary. Talk with a licensed insurance agent today for a quote that reflects your operation's potential.

Lab-grown meat firm clears FDA hurdle

Upside Foods became the first cultured animal cell meat company to complete a pre-market consultation with the U.S. Food and Drug Administration (FDA) in mid-November as the USDA's Food Safety and Inspection Service (FSIS) continues to work on a proposed rule for labeling such products.

Upside, formerly known as Memphis Meats, will use a cell-culture technology to take living cells from chickens and grow them into food in a controlled environment.

An FSIS spokesperson told DTN the agency continues to evaluate public comments that were submitted by Dec. 3, 2021, in response to a Sept. 3, 2021, advance notice of proposed rule-making. FSIS said it "intends to

develop" a proposed labeling rule. The publication date of that proposal is yet to be determined but is expected to be included in the agency's fall regulatory agenda at some point.

The FDA said in a news release the consultation process with Upside included evaluating the company's production process and the cultured cell material pro-

duced, including the establishment of cell lines and cell banks, manufacturing controls and a number of other components.

"The voluntary pre-market consultation is not an approval process," FDA said in a news release. "Instead, it means that after our careful evaluation of the data and information shared by the firm, we have no further

questions at this time about the firm's safety conclusion."

Backing from companies

Upside, based in Berkeley, CA, started in 2015. The company has backing from companies such as Cargill, Whole Foods and Tyson Foods, as well as other investors, including Bill

Gates and Richard Branson.

The company will need a grant of inspection from FSIS, while the food itself will require a mark of inspection from FSIS before it can enter the U.S. market.

"As this product comes closer to entering the U.S. market, we are closely coordinating with USDA-FSIS to ensure it is properly regulated and labeled," FDA said.

An FSIS spokesperson told DTN that prior to completing a labeling rule, the agency would review and approve labels for any cell-cultured meat products under existing requirements.

"During this review, FSIS will ensure labels clearly differentiate cell-cultured products from slaughtered meat and poultry products and bear all mandatory features required by the labeling regulations for meat and poultry products," FSIS told DTN.

Currently, FDA and FSIS follow a joint regulatory framework for cell-cultured meat and poultry products.

In December 2021, in comments submitted to the agency for a proposed labeling rule-making, meat and poultry groups told USDA they want cultured meat cell products to be distinctly labeled to avoid consumer confusion.

Regulation is point of contention

The science of growing protein from cultured animal cells is advancing, and commercial sales of proteins derived from them are expected in the near future. Exactly how to define and regulate these products remains a point of contention. Meat derived from cultured animal cells is grown in a laboratory instead of being raised in a pasture and slaughtered as meat.

Agriculture groups said in public comments any labeling of cultured animal cell products should make the distinction clear.

The National Cattlemen's Beef Association (NCBA), for example, asked USDA to work with lab-grown protein companies to establish "marketable product names" that can be "easily distinguished" from the practice of raising animals and harvesting meat products. NCBA said the agency should adopt "lab-grown" as an "unambiguous description" for cultured animal cells.

FDA oversees the process for collecting and growing the cells, and FSIS oversees the process for making meat and poultry products from those cells.

Every firm that makes these products must get approval from each agency, whether or not they follow the same production method as a firm that has received approval, according to FSIS.

Cell-cultured meat and poultry products will be subject to the same food safety, sanitation and inspection regulations as other meat and poultry products, FSIS said. — Todd Neeley, DTN staff reporter

FRIDAY 16 DECEMBER 2022

18th ANNUAL PRODUCTION SALE
WESTERN LIVESTOCK AUCTION
Great Falls, Montana
12:30 PM

SELLING:

- 25 BULL CALVES
- 75 FALL YEARLING BULLS
- 60 2 YEAR OLD BULLS
- 680 COMMERCIAL BRED HEIFERS
- 140 BRED 2 COMING 3 YEAR OLD COWS
- 30 BRED TEN YEAR OLD COMMERCIAL COWS
- 25 8 YEAR OLD REGISTERED COWS

SIRES INCLUDE:

- Bobcat Blue Sky (*18880272) • Sterling Pacific 904 (+*19444025)
- Carter Power Surge (19829429) • Connealy Emerald (*19257149)
- Circle L Gus (*17993084) • Mohnen Upstream (*19562466)
- Apex Klondike (*19337906) • PGC Force (*19230832)
- Vermilion Spur B024 (17841616) • Jindra Megahit (+*17731559)
- Mytty Natural (17935475) • GMAR Power Guard H367 (+*19754679)
- Musgrave 316 Exclusive (*18130471)

BOBCAT EXCLUSIVE K5



Lot 1
+20444117

CED +4 | BW +2.8 | WW +74 | YW +128 | MK +25
CW +64 | MB +.99 | RE +.94 | Fat +.047
\$M +78 | \$W +68 | \$F +113 | \$G +70 | \$B +183 | \$C +315

BOBCAT BLUE SKY J214



Lot 28
20296172

CED +9 | BW +2.4 | WW +79 | YW +139 | MK +35
CW +63 | MB +.54 | RE +.55 | Fat +.043
\$M +68 | \$W +80 | \$F +109 | \$G +44 | \$B +153 | \$C +266

BOBCAT EXCLUSIVE K2



Lot 4
+20444114

CED +10 | BW +.9 | WW +72 | YW +123 | MK +28
CW +54 | MB +1.05 | RE +.96 | Fat +.048
\$M +100 | \$W +76 | \$F +92 | \$G +73 | \$B +165 | \$C +314

BOBCAT UPSTREAM J16



Lot 103
20205154

CED +15 | BW -.1 | WW +73 | YW +135 | MK +32
CW +58 | MB +.87 | RE +.94 | Fat +.017
\$M +79 | \$W +76 | \$F +105 | \$G +67 | \$B +172 | \$C +302

Broadcast Live Videos available online www.northernlivestockvideo.com



Bryan Ratzburg:
(406) 937-5858
Cell: (406) 788-3272

Ernie Ratzburg:
Cell: (406) 788-3244

bobcatangus@northernintel.net



GALATA, MONTANA

www.bobcatangus.com



Do You or You and Your Neighbor Have 300+ Acres of Clean Farm or Pasture Land? Lease Us Your Land!



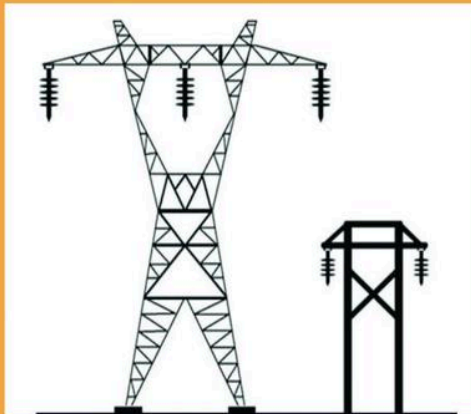
300 acres or more relatively level, clean farm or pastureland with a large transmission line crossing?

Lease Your Land for Solar Power Production

Extraordinary income to the right property owner(s)

If your property qualifies or your property along with neighbors qualify you may potentially receive long term income. (20 – 40-year lease)

\$800 - \$1500 Per acre Per year with incremental increases



Do You Have Power Lines Like This On Or Adjacent To Your Land?

- Can Not be Subtransmission Lines
- Must be Transmission Power Lines
- Must be 115 Kv to 345 Kv

Please Note the Four Essential Requirements Below

Transmission lines crossing or within 200 yards of property

300 or more acres (must be in recent cultivation or in pasture or clear open range)

No timberland or clear cuts

State or county maintained road bordering the property

CALL (828)-817-5400 or (828)-817-9101
Email Us at: InnovativeSolarFarms@gmail.com

Visit our website at innovativesolarsystemsllc.com to view recent projects

Beef Quality Assurance doesn't end at the farm gate

Cow-calf producers, stockers and feedyards implement Beef Quality Assurance (BQA) practices on their operations to produce the highest quality cattle and provide consumers with the best possible eating experience. However, BQA doesn't end at the farm gate, and those transporting cattle are encouraged to become BQA Transportation (BQAT) certified.

"Hauling can be one of the most stressful times in the life of cattle," said Colby Carpenter of W & J Carpenter Trucking Inc., a 2022 BQA award winner. "BQAT provides anyone transporting cattle with the information and resources they need to make sure animals are

handled properly, resulting in less stress and a higher quality product for consumers."

BQAT is a comprehensive management program that incorporates responsible practices in all phases of transporting cattle. In-person trainings and free online courses are designed for both ranchers hauling cattle in gooseneck trailers and professional drivers who are transporting animals in semitrailers. These courses teach proper methods for hauling cattle, including biosecurity, fitness for transport, pre-trip planning and loading and emergency management.

BQAT is science based and producer driven, and

online modules have been updated. A working group of industry leaders from all sectors of the cattle industry came together to revise BQAT material and provide the updates needed to fit industry needs for hauling cattle.

"As the industry changes and evolves, educational materials are revised," said Trey Patterson, Wyoming rancher and chair of the BQA Advisory Group. "We work with producers and those hauling cattle to create a program that meets the needs of the animals and the industry."

The BQA program, funded by the Beef Checkoff, provides information to U.S. beef producers and beef con-

sumers about how common-sense husbandry techniques can be coupled with accepted scientific knowledge to raise cattle under optimum management and environmental conditions. BQA

guidelines are designed to make certain all beef consumers can take pride in what they purchase—and can trust and have confidence in the entire beef industry.

BQA and BQAT certifications are available through in-person trainings and online courses. To learn more about BQA and to become certified, visit www.bqa.org. — BQA

Rail strike could have catastrophic effects

RAIL STRIKE (from page 1)

National Grain and Feed Association (NGFA) President and CEO Mike Seyfert cautioned in a statement, "A rail strike or lockout combined with existing challenges in the rail system and other modes of transportation, including truck-

ing shortages and low water levels on the Mississippi River hindering barge shipments, would be catastrophic for the U.S. economy."

Background

The potential for a rail strike began in the summer of 2022 after three years of failed contract negotiations.

Unions have generally asked for pay increases, better working conditions, less strict attendance rules and additional paid time off.

Railroads have been preparing for the potential threat by minimizing shipments in case the strike does come to fruition.

Max Fisher, NGFA chief economist, told Farm Journal in September, "The railroads don't want to have the cars and equipment out in areas of the country where they can't protect them very well. So, they're taking steps to mitigate damages. For our members, they're looking at essentially not receiving their grain on time and not being able to then ship out the finished products such as ethanol, flour, things of that nature."

Within the livestock sector of the agricultural industry, a major issue is the inconsistent delivery and shipment of corn to feedyards across the country. These shipment inconsistencies can also cause issues for processing facilities by either increasing backlogs or spoiling products.

In a statement earlier this summer, Seyfert said, "It seems to be most severe right now in the West, or for those who are trying to ship west on those lines that are going into the western part of the country. Either for feed purposes, processing purposes, or export purposes to the western side."

In June, Foster Farms requested the Surface Transportation Board execute an emergency service order, stating, "The Union Pacific Railroad Company ('UP') over the past five months have clearly established that UP, utilizing its current operating practices, cannot transport the rail traffic offered to it (by Foster Farms) in a manner that properly serves the public, meaning (1) Foster Farms, (2) the growers of the millions of animals to whom Foster Farms supplies feed made from corn delivered by UP in unit trains, and (3) the public at large that depends on the affected livestock for food."

The unions have opposed previous deals that offered five-year contracts that included a 24% increase in wages and \$5,000 bonuses to employees. Track maintenance workers previously requested seven days of paid sick time to be added to the deal in order for them to agree to the contract.

The involved parties in this rail strike reach beyond the agricultural industry and involve every commodity and consumer. As of Nov. 21, the labor deal was rejected by one of the largest rail unions, the Sheet Metal, Air, Rail and Transportation Workers Transportation Division. It is unclear what will happen leading up to the next proposed rail strike in early December. — Chloé Fowler, WLJ correspondent

BIG SKY ELITE

GREEN MOUNTAIN RED ANGUS • C-T RED ANGUS
FEDDES RED ANGUS • KLOMPIEN RED ANGUS

Female Sale

Offering:

200 Registered Sale Lots

Bred Females • Donor Prospects • Elite Picks • Choice Lots

Performance-Minded Cattle • Balanced EPDs • Outstanding Dispositions • Great Mothers

Wednesday,

December 7,

2022

Lunch at noon
Sale at 1 p.m. MST
Green Mountain Red Angus • Logan, MT



Lot 2 – Pick of Feddes Heifer Calves
Selling the pick of all the 2022-born heifer calves. Last year, a Feddes bred heifer topped the NILE sale and two heifer calves were the top two selling lots at the Bet On Red sale, bringing \$30,000 and \$25,000.



Lot 1 – C-T ABIGRACE 1118 # 4468551
Show-stopping phenotype with a beautiful foot and leg set and front end. She has extra length of spine, good volume and rib shape. She sports 11 traits in the top 21% of the breed. Bred to Bieber Energize F121 for a February calf.



Lot 3 – Pick of GMRA Bred or Open Heifers
Opportunity to choose from over 150 females for top-end genetics with powerful performance and breed-leading traits. Bloodlines: Brunswick, Domain, Energize, Excellence, Game Changer, King James, Spartacus, Stockmarket and Tesla.



Lot 4 – DKK STARLETTE 6125 #3533314
Gorgeous matron that puts it all together from structure to EPDs to performance to pedigree to maternal quality. She boasts top rankings in HB, Stay, ProS and CEM, with a 105 MPPA, top-ratioing progeny and amazing daughters.



Lot 9 – FEDDES JESSA C61-852 #3992594
This young 510 daughter has an MPPA of 106 on 3 calves. She combines several maternal giants including Make Mimi, Montana X44, Cutting Edge and Right Kind U199. She's due in March to WEBR Headliner 59G.



Lot 15 – C-T VRDALE 6058 #3535315
Proven producer from the very maternal Vrdale cow family with extra rib, a beautiful front end and straight top line, not to mention her foot and leg set and udder. Bred for an early March calf by the exciting new herd sire, C-T Resource 1052.



Lot 75 – GMRA OPHELIA 085H #4293463
Impressive Brunswick daughter with a maternal pedigree of top-notch producers, including herd-leading MPPAs of 109 and 108. She has a strong set of numbers with outstanding growth and carcass, and beautiful phenotype.



Lot 129 – DKK BLOSSOM 1172 #4436821
Here's a fancy, powerful, deep-ribbed, long-sided and structurally correct beauty queen. She's the total package! This gal is sporting the top 26% or better in all three indices along with the top 2% & 3% WW and YW EPDs.

Free trucking to pick-up locations in Madras, OR • Canton, OK Douds, IA • Aberdeen, SD

Catalog Online at: www.redcows.net

Catalog & Videos Online at: DVAuction.com

DVAuction Broadcasting Real-time Auctions



FEDDES RED ANGUS

Chuck & Carol Feddes
406-581-8826
Jake & Alyssa Feddes: 406-581-8157
Manhattan, MT
www.feddesredangus.com



C-T RED ANGUS

Craig & Taryn DeBoer
406-282-9029
Manhattan, MT
www.ctredangus.com



GREEN MOUNTAIN RED ANGUS

Bob & Julie Morton: 406-580-0348
Tom & Katie Morton
Jim Morton
Three Forks, MT
www.gmracattle.com



KLOMPIEN RED ANGUS
Breeding the Best — Cutting the Rest

Dave & Kay Klompien
406-282-7537
Manhattan, MT
www.klompienredangus.com

THE VIEWPOINT

with Raylee Honeycutt

This exclusive column found only in WLJ features unique perspectives from some of the nation's top producers, marketers, animal health experts, economists and more.

Raylee Honeycutt was recently appointed the executive vice president of the Montana Stockgrowers Association (MSGA), becoming the first woman to lead the organization in its 138-year history.



Raylee Honeycutt

While Raylee may be the first woman to lead the organization, she has gratitude for the women who settled the American West and Montana on their own.

Raylee is originally from Fort Shaw, MT, where she raised 4-H livestock. She received her degree in agriculture education from Montana State University. After graduation, she moved to the Midwest and worked as the marketing coordinator for CountryMark, an energy cooperative in Indiana. While in Indiana, Raylee was the education and outreach leader for the Marion

County Farm Bureau, home to Indianapolis, where she reinvigorated the membership to become—as she told *WLJ*—one of the leading urban agricultural Farm Bureaus in the nation.

Raylee said while in Indiana, she participated in the Indiana Agriculture Leadership Program, which allowed her to look at other perspectives, find a consensus when talking about difficult issues and find places to grow and mentor others.

Raylee moved back to Montana, worked for the

served on the staff side from a membership organization, but also having sat in the seat of a member leader as well," Raylee said.

She said wearing both hats allows her to bring unique experience to the position at MSGA. Raylee continued that the group's members "have been the fabric and the history of our organization for the last 138 years, and that will continue to be my top priority moving forward." She said going forward, it will be about building the framework for the future of the organization from a membership, financial and policy standpoint.

"My goal is to look at what we're doing through a lens that we haven't done before," Raylee said. "There's a lot of ways that we can be smart in our collaborations and our coalitions that we're part of and maybe sit at the table with groups or in places that we've never done before to engage and build our organization into the future so that we continue to have another 138 years of MSGA being the leader and the voice of the Montana cattle industry."

Raylee recognizes that how we engage with information has changed in the last 50 years, and MSGA has to shift how it does business to capture people's engagement. She contin-

ued there are many ways for younger members to engage, and it is vital to have strong leaders within the organization. The M Bar Academy is one such opportunity to bring value to MSGA members.

M Bar Academy, an 18-month MSGA leadership program that began in June 2022, was something MSGA members were only discussing. With Raylee's background in adult learning and her previous experience with the Indiana Agriculture Leadership Program and a leadership program at CountryMark, she made the idea a reality. She said it has been fun to do.

Raylee says the first issue affecting ranchers starts with a national and global perspective on climate change and how the cattle industry incorporates sustainability. Second, the threat to the industry from plant-based and fake meats, along with "meat-free Mondays," is a cause for concern for the organization. From a policy standpoint, Raylee said we live in a society of litigation, and producers' decisions regarding grazing on public lands or other management decisions will draw the ire of someone, and they will sue to make policy changes. Raylee said the environmental organizations have

done a good job of fundraising so they can bring suits, and that is something MSGA and producers have to be prepared for, "even though it's not something that we necessarily are comfortable with or like to do, but I don't see it going away in the next five years."

Raylee said the Bureau of Land Management's decision on American Prairie grazing bison on federal lands will continue to be an issue. Raylee also sees water availability and drought at the forefront of the issues in the next 10-15 years—especially with the influx of people who moved to the state during the pandemic and the external pressure of people who do not align with agriculture. Raylee pointed out the growth of Bozeman in the Gallatin Valley and how water rights are becoming a topic of conversation between developers and the landowners.

"I think there's an opportunity with landowners; continuing to tell the story about the benefits of cattle grazing and conservation and how they can work together is an opportunity that our industry can definitely have," Raylee said.

Raylee said producers have been leaders in the conversation about wolves and grizzly bears with the

general public. However, Raylee said the biggest threat comes from out-of-state folks that interject their preference on how apex predators should be managed in Montana, especially in and around Yellowstone National Park.

"We need to continue to advocate that there are consequences when living with apex predators, whether it's human safety, whether it's livestock safety, and that needs to have a higher priority than general population input," Raylee said.

Raylee encourages people to join MSGA to fight for grassroots causes because cattle producers are stronger as an industry. She encourages women to be involved, regardless of if they think they are too young or not qualified to have a seat at the table. Raylee believes that once women have progressed through their careers, they must give back and mentor other women.

"If people aren't sure if MSGA is a fit for them, I would love to learn how we can earn their membership and invite them to really consider joining our organization because all perspectives are very valuable when we work for the greater good of building a strong organization," Raylee said. — Charles Wallace, *WLJ* editor

Courtesy photo

Montana Office of Tourism in marketing and then transitioned back to agriculture, initially working at MSGA as the director of natural resources.

Raylee said the decision to move to executive vice president was something that came naturally, as she has over 20 years of experience in grassroots membership organizations.

Raylee said she was fortunate to have people, regardless of gender, throughout her career to bounce ideas off of and have for mentorship and advice.

"I think what I bring is a unique balance of having



COMING EVENTS

(Send calendar of events information to editorial@wlj.net.)

Nov. 30-Dec. 1 – The 2022 California Cattlemen's Association/California CattleWomen Convention is headed back to the Nugget Casino Resort in Sparks, NV, and will be held in conjunction with the Nevada Cattlemen's Association's Annual Convention. Attendee and exhibitor registration for the event are now open! Register and get more information at calcattlemen.org/convention2022.

Dec. 7-9 – The Montana Stockgrowers Association's 138th Annual Convention & Trade Show

will be held at the Double Tree by Hilton and the Northern Hotel in Billings, MT. Room reservations must be made by Nov. 22 to receive the block rate. To register and for more information, visit mtbeef.org.

Dec. 8-10 – The U.S. Cattlemen's Association's 15th Annual Meeting and Cattle Producer's Forum will be held at the DoubleTree Nashville Downtown in Nashville, TN. Registration and room reservations are now live at cattlemensmeeting.square.site. Contact usca@uscattlemen.org for sponsorship opportunities.



YOUTH OPPORTUNITIES

(In an effort to serve the next generation of livestock producers, WLJ's Youth Opportunities calendar lists internship and scholarship information for agricultural- and livestock-focused students, listed by application deadline. If you have an internship or scholarship to announce, please email it to editorial@wlj.net.)

Dec. 1 – Applications for the Angus/Talon Youth Educational Learning Program Internship are now open. College sophomores, juniors, seniors and graduate students under the age of 25 and majoring in an agricultural-related field of study are eligible to apply. Angus breeders and students interested in participating in the program can learn more and apply at bit.ly/AngusFoundationTalonProgram, or contact Jaclyn Upperman, Angus Foundation executive director, at JUpperman@Angus.org.

Dec. 2 – The Public Lands Council, in conjunction with the National Cattlemen's Beef Association, is now taking applications for public policy interns to join the D.C. office during the summer of 2023. This in-person internship will run from May 15-Aug. 11, 2023. Application: jobs.keldair.com/ncba. Contact Justyn Tedder at jtedder@beef.org with any inquiries.



485 HEAD SELL

MITCHELL ANGUS - COMPLETE DISPERSAL

10 AM CST • Wednesday, December 14, 2022, at Burwell Livestock Market, Burwell, NE

The Mitchell Angus Herd Is Based Entirely Upon Four Jorgensen Foundation Females



Eldorado 156 of Ideal

DORINDA COW FAMILY

The cow family known for producing Rito 149, Rito 72, Rito 206, Eldorado 156, Rito 549, Ideal 7318, Super X 5189, Ideal 692, Ideal 3452, Ideal 033 and others.

MARJORIE COW FAMILY

The cow family known for producing Ideal 1254, Ideal 9199, Ideal 6442, Ideal 7275, Ideal 5609, Rito Revolve 0R5, and the popular second top-selling cow of the recent Jorgensen Female Sale.



EE 30 1254 of Ideal 5254 960



Ideal 5439 of 1418 2455

HEIRESS COW FAMILY

The cow family that produced Ideal 5439 of 1418 2455, the ABS Global Pathfinder® Sire with strong maternal influence who topped a past Jorgensen Angus Sale.



CED BW WW YW MILK MB RE
+10 +0 +78 +133 +32 +82 +82

TEHAMA TAHOE B767 - His progeny and service sell.



CED BW WW YW MILK MB RE
+12 -.6 +66 +133 +26 +68 +61

LD CAPITALIST 316 - His progeny and service sell.



CED BW WW YW MILK MB RE
+9 -.1 +88 +153 +23 +77 +56

KESSLERS COMMODORE 6516 - His progeny and service sell.



CED BW WW YW MILK MB RE
+10 +1.3 +91 +170 +31 +32 +69

DEER VALLEY GROWTH FUND - His service sells.

SELLING: 233 FEMALES: 85 Coming-Yearling Open Heifers • 72 Bred Heifers • 61 Two-Year-Old Cows • 35 Three-Year-Old Cows • 31 Four-Year-Old Cows • 19 Five-Year-Old Cows • 24 Six-Year-Old Cows • 16 Seven-Year-Old Cows • 47 Eight+-Year-Old Cows
95 BULLS: 64 Coming-Yearling Bulls • 25 Coming-Two-Year-Old Virgin Bulls
6 Herd Sires
COMPLETE SEMEN INVENTORY

2021 AI SERVICE SIRES: Basin Payweight 1682, Bullerman Unlimited, Connealy Dry Valley, JD Pay Dirt 922, Kessler's Commodore 6516, LD Capitalist 316, Mill Bar Hickok 7242, Musgrave 316 Exclusive, SAV Rainfall 6846, SAV Territory 7225, Sitz Resilient 10208, Tehama Tahoe B767, WMR Timeless 458, ZWT Summitt 6507.

2022 AI SERVICE SIRES: Deer Valley Growth Fund, JD Pay Dirt 922, Kessler's Commodore 6516, KG Justified 3023, LD Capitalist 316, Myers Fair-N-Square M39, SAV Certified 0849, SAV Checkmate 8158, SAV Renovation 6822, Sitz Accomplishment 720F, Tehama Tahoe B767.

Celebrating 26 Years of Mitchell Angus

MITCHELL ANGUS

Justin, Erin & Colby Mitchell • Justin (308) 201-0050 • Erin (308) 214-1291 • Ranch: (308) 348-2060
84618 472nd Avenue • Amelia, NE 68711 • Email: mitchellangusranch@gmail.com

PRIME:

Providing Ranchers In Meat Efficiency

DVAuction
Broadcasting Real-Time Auctions

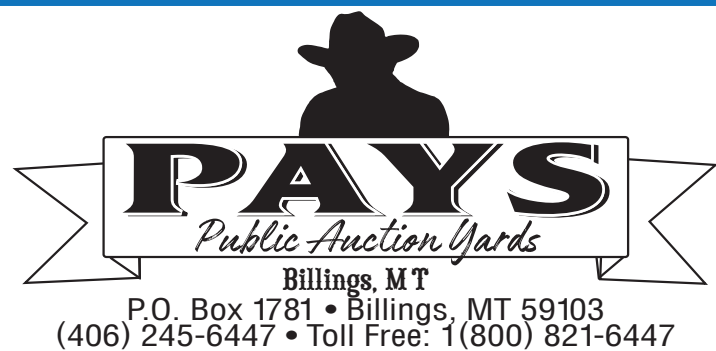
For your free reference sale booklet, contact anyone in the office of the Sale Manager, TOM BURKE, KURT SCHAFF, CARTER WARD, AMERICAN ANGUS HALL OF FAME, at the WORLD ANGUS HEADQUARTERS, PO Box 660, Smithville, MO 64089-0660.
Phone: (816) 532-0811. Fax: (816) 532-0851. E-Mail: angushall@angushall.com





6,000 + BRED FEMALES SELL

Over 1500 Bred Heifers & 4,500 Bred Cows!



Billings, M T

P.O. Box 1781 • Billings, MT 59103
(406) 245-6447 • Toll Free: 1(800) 821-6447

December 6 & 7 • 2022 @ 9:00am Each Day

FEATURED CONSIGNMENTS:

Ellis Beaver Creek Ranch Dispersion

230 Hd – 90% Blk/10% Red 3 to 6 Year Old Bred Cows
March (25th) Calvers, Bred to Black Angus (VR, Bilyeu), Spring Shot Program, Weaned nice calves, Ran in Big country
120 Hd – 90% Blk/10% Red 8 to 10 Year Old Bred Cows
March (25th) Calvers, Bred to Black Angus (VR, Bilyeu), Spring Shot Program, Weaned nice calves, Ran in Big country

Flanagan's Diamond J Dispersion

203 Hd – Black Angus Cows
Calve March 20th for 45 days
40 - 3's & 22 - 4's bred to Black South Devon bulls
141 - 5 to 11 Year Olds bred to Ireland Angus bulls
All home raised, age freeze branded, cake broke, gentle

J2 Bar Land & Livestock Complete Dispersion

100 Hd – Blk Angus Mixed Age Cows
3-9 Year Olds, Calve March 20-May 20th, Bred to 100% Vermilion Angus Bulls sons of Bomber & Spur. Nutra-Lix, Mineral, and Salt Program. Been on Fall Vacc Program (none this Fall), Cake broke & gentle, Complete & Total Dispersion

Lyle & Karla Peterson Complete Dispersion

115 Hd – Blk Angus Mixed Aged Cows
Calve March 20th-May 20th, Bred to Vermilion and Leo McDonnell Bulls, Cake Broke and Gentle, 35 Years of breeding, Annual Fall Vacc and Pour On (none this year), Really nice set of Cows, Total Dispersion

MM Matovich Ranch Complete Dispersion

274 Hd – Blk Angus Mixed Age Bred Cows
Start Calving March 20th, Bred to Vermilion and Bobcat Angus Bulls, Good Mineral Program and All natural cow herd, Always some of the top selling calves on NLVA every summer. Complete and Total Dispersion

Gerald Weaver Complete Dispersion

130 Head - Black Angus 3 to 6 Year Old Cows
Start calving Feb. 10, bred to Black Angus Freeman bulls, Dectomax pour on in the Spring/Fall, steer calves beginning of Oct. avg. 600#, selling due to lost of winter pasture

Blakenship, Jess

76 Hd – Black Angus Heifers
Calve March 1 – April 15, bred to Angus bulls, full mineral program, good set of Eastern Montana Bred Heifers

Broken O

230 Hd – Black Angus Heifers
100 calve Feb 5 – March 10, 130 calve March 10 – April 20, all bred to LBW Skogan Angus bulls, home raised, Fall shots, pour on

Cook Herefords

2 Hd – Purebred Hereford Heifers
March 10th Calvers, AI bred to Churchill Broadway, Cleaned up by Angus Bulls, SR Dominate, High Quality

Ferguson LTD

65 Hd – BWF Heifers
Sired by Durbin Creek Hereford Bulls, No Brand

Ferguson LTD

100 Hd – Blk Bred Heifers
Sired by Paint Rock & Vermilion Angus Bulls, Poured at turn out, Ultrasounded Aug. 20th and poured with Cydectin, Loomix Vitamin & Mineral Program. Bred to Sons of Countdown. Branded. (Bleached over shoulder=March 1st-30th & Bleached over hips=April 1st-30th)

Foster, Paul & Laura

114 Hd – AI Bred Heifers
AI'd May 5th (Feb 12th Calvers), to GGT P BK Rimshot 79E, Homozygous polled and Homozygous Black Optimizer Bull

33 Hd – AI Bred Heifers

AI'd June 13th (March 22nd Clavers), to Churchill Manhattan 428B ET

40 Hd – Blk Bred Heifers

Bull bred to LBW Red and Black Optimizer bulls from GG&T Cattle Co, Skinners Ranch, Calve April 1-15

9 Hd – Blk Bred Heifers

Black optimizer bred heifers bull bred to LBW black optimizer bulls from GG&T Cattle Co Calve March 18-April 14

42 Hd – AI Bred Heifers

Black Optimizer Bred Heifers, AI'd May 5th (Feb 12 Calvers), to MAC Blackbear 31B, Homozygous polled and Black bull

Glennie, Neil

80 Hd – Blk Angus Bred Heifers
One Iron, Cale March 1 for 45 Dyas, bred to King Air and Countdown sons from Vermilion Ranch. Scour Guard Shot, Cake Broke

Griffin

73 Hd – Blk Angus AI Bred Heifers
AI Bred to Sitz Logo, Calve March 15th, Fancy set of heifers out of purebred Angus program selling as commerals, Fall Shots & Poured

40 Hd – Blk Angus Bred Heifers

All bull bred to LBW Angus sons of Resilient, Calve April 1-May 15, Fall Shots & Poured

Horpested

127 Hd – Red Angus Bred Heifers
Start Calving Feb 1st, Bred to Redland Red Angus LBW Bulls, Avg 1000Lbs

Horse Creek Ranch

80 Hd – Blk/BWF AI Bred Heifers
March (20th-25th) Calvers, Bred to King Air, Fall Shots & Poured

45 Hd – Blk/BWF Bred Heifers

April (1st for 20 days) Calvers, Bred to LBW Angus Bulls (VR, Sitz, Veltcamp), Fall Shots & Poured

Hoyt

54 Hd – Blk Bred Heifers
Start Calving March 10 for 45 Days, Bred to LBW Black Diamond Angus Bulls and Black Diamond Domino BWF Bull, Breeding shots and poured, Ultrasound tested

Lazy TM Hfirs

117 Hd – Blk Bred Heifers
Start Calving March

Les Craft Angus

5 Hd – Blk Angus Registered Bred Heifers
Start Calving Jan 1st to Feb 8th, 1200lbs, AI bred and ultrasounded to Baldrige Versatile (Top Bull of 2021 Baldrige Sale) Registraion available for 75.00, No Brand

Milligan Canyon #1

68 Hd – Blk Angus Bred Heifers
AI Bred to Hereford Domino 1109, and cleaned up for 45 days with a Domino Calve ease son. 38 AI Bred to calve March 10th, 30 bull bred to calve March 23-April 30(pink tab). All Heifers off one ranch with proven genetics. Complete Spring Vacc Program and Fall Shots Vision 8 and VL5

Milligan Canyon #2

50 Hd – AI Bred BWF Bred Heifers
Straight BWF Bred Heifers, AI Bred to Registered Calving Ease Angus Bulls, Sitz Impulse 732J, HA Cowboy Kind 8157, and KG Just Cause, AI'd to Calve March 2nd, One Iron, Deep Bodied, Docile Heifers. Complete Spring Vacc Program and Fall Shots Vision 8 and VL5

Milligan Canyon #3

21 Hd – AI Bred BWF Bred Heifers
Straight BWF Bred Heifers, AI Bred to Registered Calving Ease Angus Bulls, Sitz

Impulse 732J, HA Cowboy Kind 8157, and KG Just Cause, AI'd to Calve March 10th, One Iron, Deep Bodied, Docile Heifers. Complete Spring Vacc Program and Fall Shots Vision 8 and VL5

Milligan Canyon #4

45 Hd – Bred BWF Heifers
Calve March 23-April 30th. Bull bred to KG Justified Sons and Sitz Powerball Sons, Ultrasound Tested. One Iron, Deep Bodied, Docile Heifers. Complete Spring Vacc Program and Fall Shots Vision 8 and VL5

Milligan Canyon #5

49 Hd – Blk Bred Heifers
No Brand Heifers, Moderately Framed, Bull bred to KG Justified Sons and Sitz Powerball Sons, Ultrasound Tested to Calve March 23-April 28th. Complete Spring Vacc Program and Fall Shots Vision 8 and VL5

Palisades Livestock Heifers

53 Hd – Blk/Bwf Bred Heifers
30 calve June 1-15(green), 23 calve June 15-Aug. 15, bred to Vermilion & C Spear Angus bulls

Verlanic, Pat

15 Hd – Black Angus Bred Heifers
April/May calvers, bred to Black Angus bulls, Fall shots

Weaver Ranch

55 Hd – Blk/BWF Bred Heifers
Bred to LBW Black Angus Bulls, Ultrasound tested to calve April 8-28, 1050#

Willmore, Sue

55 Hd – Blk Angus Bred Heifers
March (5th for 60 days) Calvers, Bred to LBW Sim/Angus, All Fall Shots and Poured, 950+Lbs, Gentle

Yates Ranch

85 Hd – Blk Angus Bred Heifers
37 Hd AI Bred to Calve March 1, Bred to Casino Bomber, 18 carrying bull calves (yellow button left ear) 19 carrying hfr calves. Ultrasound tested.
48 Bull Bred Hfirs bred to LBW L Bar W Horned Hereford bulls, calve March 20th for 45 days (dual white tags). All Heifers one iron, age branded and tagged, big and gentle, Purina mineral program

21 Mile Cattle Co.

35 Hd – Short Term Mostly Blk
March (10th) Calvers, Bred to Basin, B&K, & 21 Mile Angus Bulls. Fall Shots, Poured

Albin

60 Hd – Black Angus 3 & 4 Year Old Bred Cows
10 Hd – Black Angus 5 to 9 Year Old Bred Cows
Calve March 20th for 50 days, bred to Beartooth Angus bulls, Spring shot program

Allen, Bret

212 Head - Blk/Bwf Coming 3 & 4 Year Old Bred Cows
140 calve March 18-April 14(Yellow)
63 calve April 15-May 15(Green)
9 calve May 15-June 21(double yellow)
Bred to top Vermilion & C Spear Angus bulls, front end set of young cows that wear a heck of a set of calves in 2022

Altoff

200 Hd – Blk/BWF 3&4 Year Old Bred Cows
Start Calving March 10th, Bred to Mydland Angus Bulls, Spring Shots

Arthum Ranch

140 Hd – Blk Angus, Mixed Age
Late March to Early May Calvers, Bred to Current Creek & Wheeler Mountain, No breeding shots, Poured

Bertolino, Mark

55 Hd – Blk 2 to 5 Year Old Bred Cows
April May Calvers, Bred to Black Bulls,

Fall Shots

Boyce, INC

262 Hd – Blk Angus 2-12 Year Bred Cows
Calving Feb 16th to April 13th(102 Cows) & Calving March 16th to May 31(61 Cows) Blk Angus 3 to 4 Year Olds, Bred to Black Angus Bulls, Fall Shots and Poured. 5-12 Year old Bred to Sim/Angus Bulls, Fall Shots and Poured.

Coppedge

150 Hd – Black Angus 3 Year Old to Short Term Bred Cows

Start calving March 23rd for 60 days, bred to Angus bulls. Fall vaccinations and pour on given Nov. 30th at preg test. Cows are on a Scour Boss regiment, calves weighed 611# on Nov. 17th, only selling due to 2 years of drought

Dragging Y Cattle

220 Hd – Blk Angus Mixed Age
May Calvers, Bred to Charolais Bulls, Fall shots and Poured

Dubs, Louis

10 Hd – Black Angus Mixed Age Cows
Start calving Feb. 1 – April 1, bred to Registered Angus bulls, Dectomax, home raised. Cattle Master 4 VL5, Scourguard 4 KC, Ultrachoice 8 in Dec. 2021

Ferguson LTD

15 Hd – Red Angus Coming 4 Year olds
Calving March 1 for 60 days, Bred to Red & Black Angus Bulls, Poured, Loomix Vitamin & Mineral Program.

Ferguson LTD

60 Hd – Blk 6+ Year olds
Start Calving March 10th for 60 Days, Bred to 2 Black Sons of Countdown and 1 Black Saler Bull from Big Sky Salers. Poured, Loomix Vitamin & Mineral Program.

Ford's Creek Colony

25 Hd – Black Angus 3 to 7 Year Olds
Start calving April 15 – May 10, bred to mostly Shipwheel & Arntzen Angus Bulls, home raised, Bovi Shield Gold, mineral program, good disposition, coming from a reputation herd

Fritz Angus

45 Hd – Red Angus 2 to 8 Year Olds
Calve Feb. 1 – April 18, bred to Red Angus bulls, Spring shots-Vista 5 V1%, Multimin, Dectomax injectable, poured. Fall shots-Lepto Booster, poured

Hairpin

300 Hd – Red/Blk 6 to 10 Year old Bred Cows
April 31st to June 13th Calvers, Bred to Sim Angus & Red Angus Bull

Hilltop Angus

65 Hd – Mixed Aged Bred Cows
Black Angus, Mostly 2-7 Year Olds, Bred to Hilltop Angus herd sires, April calvers, Fall Vaccs and Poured

Jansen

15 Hd – Mixed Aged Bred Cows
Mostly 11-12 Year olds, Bred to Black Angus Bulls, Calve March 1st to April 15th

Johnson, Phil

100 Hd – Blk Angus, 3 to 5 Year Olds
Start Calving March 20th, Bred to Oxbow (GDAR) Angus Bulls, Home Raised

Lazy TM Ranch

45 Head- Blk Mixed Aged Bred Cows
March 20th

L Bar W Cattle

25 Hd – Blk/BWF Short Term Bred Cows
March/April Calvers, Bred to Basin Adventure and Basin Empire bulls, Spring Vacc program, Mineral Program

Lafond, Russel

30 Hd – Blk Angus, Mixed Age
March (15th) Calvers, Bred to Leo McDonald Bulls, Fall Shots & Poured

Les Craft Angus

10 Hd – Blk Angus Registered 2 to 3 Year Olds
Start Calving March into April, Bred to sons of GAR Home Town, Baldrige Alternative, and Basin Payweight 1682. Fall shots & Poured. Weaned 650lb calves in mid October. Registration available for 75.00, No Brand

5 Hd – Blk Angus Registered 7 to 9 Year Olds

Start Calving March into April, Bred to Sons of Basin Payweight 1682, LD Capitalist 316, and Baldrige Alternative. Fall Shots & Poured. Weaned 650lb calves late October. Registration available.

Neal, Bruce

140 Hd – Black Angus 3 Year Olds
Start calving March 20th for 60 days, bred to Black Angus bulls, home raised, steer calves avg. 550#, poured

Ostrum, M

40 Hd – Mixed Aged Bred Cows
Start Calving March 5th, Bred to Really good Vermilion Angus Bulls, Always on Fall Program (none this fall), Calves weaned off at 600#, Big and Gentle Cows

Palisades Livestock Cows

101 Hd – Blk/Bwf 4 to 7 Year Old Bred Cows
Ultrasounded for June 1-15(green), June 16-Aug. 15(white), bred to Vermilion & C Spear Angus bulls

Rock Creek Cattle

80 Hd – Blk Angus 3-5 Yr Old Bred Cows
Start Calving April 1st, Bred to High Performing Vermilion Angus Bulls, Given Vision 8 Somnus, VL%, Safeguard, and Clean up at Fall Ultrasound, Year Round Mineral Program, Years of Vermilion Angus Genetics

Schwend

60 Hd – Blk/BWF 3&4 Year Old Bred Cows
Start Calving April 10th, Bred to Mydland and Stevenson Angus Bulls, Spring Vacc Program, Full Mineral Program, Coming Right off Grass

Siewert Ranch

55 Hd – Blk Angus 2-6 Yr Old Bred Cows
Calve March - May, Bred to Black Angus Bulls. Of of a reputation herd program, some cows AI'd sired

Smith, Kori

20 Hd – Blk Angus Bred Middle Age Cows
Feb (25th) Calvers, Bred to Leachman & Montana Ranch Angus Bulls, Spring Vacc Program, Poured in the Fall

Stoltzfus

43 Hd – Blk/BWF 4-6 Yr Old Bred Cows
Bred to Gateway SimX Bulls, Calve April 10 for 60 Days, Fall Vacc Program

TG Ranch

100 Head - Mixed Age Black Angus Bred Cows
Start calving March 15 to June 16, bred to Angus & Saler Angus Composite bulls from Arntzen, Skinner, MJB, GMAR. Fall shots and Ivermectin pour on
32 Short Term March 15-May 5, 13 Solids May 5-15, 22 Young & Solids May 15-June 15

Tschirgi, Loretta

21 Hd – Blk Angus 3 to 4 Year Olds
March Calvers, Bred to Beaver Creek Angus, Falls Shots & Poured
28 Hd – Blk Angus 8 to 12 Year Olds
March Calvers, Bred to Beaver Creek Angus, Falls Shots & Poured

Verlanic, Pat

35 Hd – Black Angus Mixed Age Bred Cows
May/June calvers, bred to Black Angus bulls, Fall shots

Willmore, Sue

10 Hd – Blk Angus, Older Cows
March (10th) Calvers, Bred to LBW Sim/Angus Bulls

For More Information Contact:

Joe Goggins • 406-861-5664
Owner, Auctioneer, Field Rep

Bill Cook • 406-670-0689
BLS General Manager
Auctioneer, Field Rep

Bob Cook • 406-670-0078
Owner, Field Rep

Ty Thompson • 406-698-4783
Cattle Sale Manager
Auctioneer, Field Rep

Corey Schultz • 406-690-1150
PAYS General Manager

Greg Goggins • 406-200-1880
Auctioneer, Field Rep

Kenny Stahl • 406-654-4278
Field Rep

Dan Catlin • 406-671-7715
Field Rep

Jann Parker • 406-855-1947
Horse Sale Manager

Jaime Ottun
PAYS Office Manager

Paula Harris
BLS Office Manager

Roy Bookout
BLS Yard Foreman

Complete Consignment List
Online at

www.publicauctionyards.com

Updated daily!

STORY SHORTS

\$10M to support sagebrush projects

The U.S. Fish and Wildlife Service (USFWS) announced \$10 million in funding to support projects in the West to restore and conserve areas within the sagebrush ecosystem. The 50 projects will combat invasive grasses, reduce conifers, safeguard water resources for neighboring communities and wildlife, and promote community and economic sustainability. "Sagebrush country, which is a national treasure, supports American agriculture, outdoor recreation, and hundreds of species that live nowhere else in the world," USFWS Director Martha Williams said. "This ecosystem serves as the lifeblood for many rural and Tribal communities in the West. We are proud of the work we were able to accomplish last year through the first round of Bipartisan Infrastructure Law funding, and look forward to continuing collaborative efforts to conserve the sagebrush ecosystem and the significant biological, cultural and economic resources it supports." For a complete list of the projects being undertaken, visit fws.gov/program/sagebrush-conservation/what-we-do.

BLM supports wildlife connectivity

The Bureau of Land Management (BLM) released an instructional memorandum (IM) to protect habitat connectivity for fish and native plants and to preserve the ability for wildlife to migrate between seasonal habitats. The IM directs BLM state offices to access habitat connectivity areas and conduct planning, conservation and restoration efforts to ensure those areas remain intact and healthy and can support diverse wildlife and plant populations. According to BLM, the IM does not affect private lands and does not designate corridors with this action, "nor does it intend to." BLM Director Tracy Stone-Manning said the IM ties in with work already occurring with Tribes, state agencies, conservation groups and others "to make sure wildlife has room to roam well into the future."

Grass-fed beef companies merge

Two grass-fed beef companies, SunFed Ranch and Teton Waters Ranch, announced a merger to form one of the largest grass-fed suppliers. The two companies will be known as Grass Fed Foods LLC and will have over \$150 million in sales combined. "For Grass Fed Foods, having SunFed Ranch and Teton Waters Ranch joined under one comprehensive grass-fed beef platform is the first step in providing grocers and food service customers with access to a convenient, turnkey solution for grass-fed beef products in the U.S.," said Jeff Tripician, president and CEO of Grass Fed Foods. Tripician took over as CEO of Teton Waters Ranch in May 2022 and worked previously as president of the Perdue Premium Meat Co., which included the brands of Niman Ranch, Coleman Natural, Panorama Organic Grass-Fed Meats, Sioux-Preme and Alexander & Hornung. Matt Byrne, a SunFed Ranch co-founder and sixth-generation rancher, shared his support for this deal and how it can improve the lives of U.S. cattle ranchers and U.S. families.

Meat tech company changes name

Israel-based cultured meat company Future Meat Technologies announced it had changed its name to Believer Meats (Believer), effective immediately. "Our company rebranding to Believer embodies the course we've charted to build a better future of meat production," Nicole Johnson-Hoffman, CEO of Believer, told Foodmarket. "Our evolution from a biotechnology startup to a consumer-driven food technology company is a milestone on the pathway to broad adoption of cultivated meats and, importantly, signals that we're nearing commercial launch." The company opened its first cultivated meat production line in Israel in 2021 and produces cultivated chicken, lamb, beef and pork. According to the company's website, it hopes to build a facility in the U.S. in the coming year following a series of fundraising efforts.

New plant in southern Illinois

Saline River Farms LLC and USDA officials announced earlier in November plans to construct a meat processing facility just east of Marion, IL, in Williamson County. With a grant of almost \$6.9 million from USDA, the facility would process 40 million pounds of beef and 19 million lbs. of pork annually using the latest technology and automation. Jeff Diederich, a partner with Saline River Farms, said at the announcement the project will help people locally, as there are several producers in the area, and the project will provide "an opportunity to bring dollars from outside Illinois back to Illinois, put people to work and then ship that product back out." Saline River Farms plans to source animals from the region and possibly neighboring states. The facility is expected to bring over 400 jobs to the area. According to the company, it has plans to open a retail store on the site and service on-demand orders through shipping. Construction is expected to start in the spring of 2023 and will take about 15-18 months to complete.

Cornstalk quality after weathering

Fall rain and snow are good for wheat and next year's crops, but they do have drawbacks. One challenge is their impact on cornstalk feed quality.

While this fall has been relatively dry, there have been and will continue to be areas that receive some rain or snow events. Rain reduces cornstalk quality in several ways. Most easily noticed is how fast stalks can get soiled or trampled into the ground if the fields become muddy.

Less noticeable are the nutritional changes. Rain or melting snow soaks into dry cornstalk residue and leaches out some of the soluble

nutrients. Most serious is the loss of sugars and other energy-dense nutrients, which lowers the total digestible nutrients (TDN), or

decline.

Another factor that affects cornstalk grazing is wind. Throughout the fall, there always seems to be those

and husks contain the highest nutritional quality.

There is little you can do to prevent these losses. What you can do, though, is closely monitor cow and field conditions while adjusting your supplementation program accordingly. Since weathering by rain reduces TDN more than it reduces protein, consider the energy value of your supplements as well as their protein content.

Weathered cornstalks still are economical feeds. Just supplement them accordingly. — **Jerry Volesky, University of Nebraska-Lincoln Extension range and forage specialist**

Rain or melting snow soaks into dry cornstalk residue and leaches out some of the soluble nutrients.

energy value, of the stalks. These same nutrients also disappear if stalks begin to mold or rot in the field or especially in the bale. Then, palatability and intake also

days where excessively high winds will easily blow corn leaves and husks off the field. This, of course, can impact the amount of feed, and after grain, those leaves

Your Age-Advantaged Bull Headquarters



Lot 1 - #4548039
Deep, thick and clean.
Top 1% HerdBuilder.



Lot 2 - #4548641
Long, clean and thick.



Lot 3 - #4548363
Platinum son with eye appeal and high indexes.



Lot 4 - #4548455
Heifer bull with excellent performance.



Lot 8 - #4548339
Muscle, plus maternal.



Lot 5 - #4548145
Massive and thick-topped.



Lot 15 - #4548803
Excellent depth and carcass.



Lot 72 - #4537463
Massive and correct.



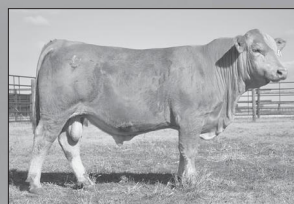
Lot 75 - #4537319
Maternal excellence and muscle.



Lot 6 - #4548665
Powerful with high marbling scans.



Lot 121 - #4399155
Powerful Profitmaker son.



Lot 136 - #4599833
HybRED bull for growth.



Lot 147 - #4591817
Big BW to growth spread bull.



Lot 226 - #4548713
Moderate and easy-fleshing.

Join us for our Annual Production Sale
Monday, December 12, 2022

A Red Angus Offering Of...
250+ Coming Two-Year Old Bulls
350+ Commercial Bred Heifers

Your purchases are always guaranteed and backed by our complete customer service!

DVAuction Broadcasting Real-time Auctions



CROSS DIAMOND CATTLE COMPANY

Scott & Kim Ford
(308) 991-2452 • Bertrand, NE 68927
www.crossdiamondcattle.com

Bulls Bred FORD TOUGH!

Bird listing will go into effect in January

ESA
(from page 1)
that adopting a third-party grazing management plan as part of the 4(d) rule will prioritize political objectives over sound science and ensures grazing activities will be obstructed.
“Over and over, the science has proven that

healthy, diverse rangelands—the exact kind of landscape maintained by livestock grazing—are where the lesser prairie chicken thrives,” Glover said. “Cattle ranchers’ efforts to conserve these acres are absolutely critical to the survival of the species. We are deeply disappointed by the Fish and Wildlife Ser-

vice’s decision to impose redundant bureaucracy and punitive restrictions on the very same people that we have to thank for the lesser prairie chicken’s continued existence on the range.”
USFWS has not identified any approved entities as of its announcement that would be able to certify grazing plans. However,

PLC said it seems unlikely ranchers or agricultural entities will be allowed to sign off on their own grazing plans and still qualify for protection under the 4(d) rule.
Ben Shepperd, president of the Permian Basin Petroleum Association, told the Midland Reporter-Telegram by email that the listing was

“careless and irresponsible.” Shepperd concurred with Glover that voluntary conservation programs have successfully conserved the species. He continued that the organization and its members have been working with USFWS through conservation agreements, preserving habitat and spending millions of dollars to protect the species.

USFWS said habitat loss and fragmentation have contributed to the loss of shinnery oak, sand sagebrush and mixed and short-grass prairie ecosystems, which are vital for the prairie chicken. According to USFWS, the population has declined from “hundreds of thousands” of birds to an estimated five-year average of 32,210 birds across the lesser prairie chicken’s five-state region.

In the USFWS announcement, the agency acknowledged the partnerships that have been made to conserve the species. It noted that the Natural Resources Conservation Service has worked with nearly 900 landowners to implement conservation actions on approximately 1.6 million acres through the Lesser Prairie-Chicken Initiative, 1.8 million acres across the range of the lesser prairie chicken through the Conservation Reserve Program, and 3 million acres in Oklahoma, New Mexico and Texas through Candidate Conservation Agreements with Assurances.

Michael Robinson, a senior conservation advocate at the Center for Biological Diversity, praised the decision to list the bird under the ESA. The environmental group sued the agency in October for the delay in making a decision to list the lesser prairie chicken.
“We wish that the Fish and Wildlife Service hadn’t delayed this protection for 27 years, because quicker action would have meant a lot more lesser prairie chickens alive in a lot more places today,” Robinson said. “We’ll watch the next steps closely to ensure there are also strong protections for the wild places where these birds live.”

“We have worked to ensure there are extensive options available for streamlined ESA compliance for all industries across the entire estimated occupied range of the lesser prairie-chicken,” Lueders said. “Moving forward, we welcome the opportunity to work with any other interested parties to develop additional options to fit their needs while providing regu-

The final rule to list the two population segments of the lesser prairie chicken and the final 4(d) rule will be published in the Federal Register on Nov. 25 and will become effective 60 days after publication. — Charles Wallace, WLJ editor



March 22, 2010, Vol. 89, No. 24

Beef Bits: Consumers to see 45 percent inflation

Consumers can expect to pay 4 to 5 percent more for food by late this year than at the end of 2009 largely because of higher costs for such staples as beef, dairy and pork, a Nebraska-based economist said. “We have beef,

pork, and dairy prices all increasing substantially since December, in the area of roughly 10 percent,” Bill Lapp, economist and president of Advanced Economic Solutions, told the Reuters Food and Agriculture

Summit last week. Food inflation, like overall inflation, has been tame for the past few months. But food inflation should gain traction as the year proceeds, Lapp said. Higher meat prices are due to cattle and hog producers

shrinking herds after years of losses. That should mean less beef and pork, with USDA estimating 2010 U.S. beef production down 1.3 percent from 2009 and pork production down 2.5 percent. — WLJ



SHIPWHEEL CATTLE COMPANY
CHINOOK MONTANA

Selling

100 – 18 month old bulls
100 – Bred heifers
50 – Bred aged cows



Shipwheel Dreamer 8522



Lot 2 Shipwheel Dreamer 1617



Lot 9 Shipwheel Dreamer 1628

**RANCH RAISED BULLS GUARANTEED TO BE SOUND!
NOT OVER-FED & NO HOOF TRIMMING!**

December 14, 2022

1pm MST Chinook, MT

Sponsored by

Shipwheel Dreamer 8522, Basin Rainmaker 4404, U2 Coalition 206C, Coleman Bravo, Musgrave Exclusive, Shipwheel Keystone 7543, KG Justified, Pine Coulee Drifter

Sponsored by

Klint & Lori
Austin & Bree
(406) 357-2492
lori@shipwheelcattle.com

www.shipwheelcattle.com



Central Oregon Livestock Auction

centraloregonlivestockauction.com
541-475-3851

Dec. 5
Feeder Sale

Dec. 12
Third Party
Verified Feeder Sale

Dec. 19
Bred Cow Sale

Dec. 26
No Sale

Jan. 2
No Sale

Trent Stewart, Owner & Auctioneer
541-325-3662

Field Reps:

Jay Burrell	541-620-1559
Eric Duarte	541-891-7863
Sam Iorenzen	541-215-2687
Chuck Simmelink	541-325-3178
Dale Landrus	541-419-8762
Tim Messner	541-410-8691



SALE REPORTS

HOFFMAN RANCH FALL BULL SALE
Nov. 14, Thedford, NE
5 Ranch broke horses \$12,700
64 Fall yearling Angus bulls 9,504
44 18-month-old Hereford bulls 6,932
3 Reg. bred Angus females 5,000
13 Reg. bred Hereford females 4,942
Auctioneer: Rick Machado
TOPS—Angus bulls: Hoffman 3210 Grow Fund 1818, 9/2/21 by Deer Valley Growth Fund; to Genex Co-Op Inc., Shawano, WI, and Hilltop Angus, Denton, MT, \$67,000. Hoffman Glacier 1784, 8/26/21 by Baldrige Glacier G123; to Flag Ranch, Torrington, WY, \$21,000. Hoffman Glacier 1784, 8/26/21 by Baldrige Glacier; to Kroupa Pukwana Cattle LLC, Pukwana, SD, \$21,000. Hoffman 3210 Grow Fund 1787, 8/27/21 by Deer Valley Growth Fund; to Micheline Farm, Peru, IL, \$20,000. Hoffman LLL Niagara 1747, 8/6/21 by Tehama Niagara H471; to Kroupa

Pukwana Cattle LLC, Pukwana, SD, \$18,000. Hoffman 3210 Grow Fund 1791, 8/28/21 by Deer Valley Growth Fund; to Stellpflug Cattle Co., Glenrock, WY, \$17,000. **Hereford bulls:** H AH MMC Entice 101 ET, 2/15/21 by UPS Entice 9365 ET; to Brumley Farm, Orovada, NV, \$20,000. H Dominator 148 ET, 4/16/21 by BCC Dominator 619D; to Miller Bros., Merna, NE, \$16,000. **Hereford female:** H PG Tess 1004, 2/1/21 by EF Beef BR Validated B413, bred to NJW 84B 4040 Fortified 238F; to Stellpflug Cattle Co., Glenrock, WY, \$10,000. **Angus female:** Hoffman FN MS Complete 1011, 2/7/21 by Heiken Broadview, bred to Hoffman Thedford; to Stellpflug Cattle Co., Glenrock, WY, \$5,250. **Ranch horse:** Ladybug Royalty, a 2014 red roan mare by JP Blue Duck; to Knox Bros., San Angelo, TX, \$22,000. — **JIM GIES**

TC RANCH ANGUS FEMALE SALE
Nov. 16, Franklin, NE
40 Total registered females \$3,554

Auctioneer: Joe Goggins
Sale Manager: American Angus Hall of Fame
TOPS—Open heifer: TC Marcia 2032, 1/11/22 by Poss Maverick; to Ryan Bonham, Franklin, NE, \$4,000. **Bred heifer:** TC Forever Lady 1067, 1/22/21 by G V F MAGA 7009, bred to 4M Patriarch 101 to calve 1/17/23; to Derek Sawyer, McPherson, KS, \$4,750. **Bred cows:** TC Forever Lady 8163, 3/6/18 by Connealy Conquest, bred to Hoffman Thedford to calve 1/11/23; to Derek Sawyer, McPherson, KS, \$5,000. TC Marcia 7095, 2/2/17 by Connealy Conquest, bred to Marda Pacesetter 074 to calve 2/15/23; to Kongable Angus, Winfield, KS, \$4,000. **Fall pair:** TC Pride 8099, 2/15/18 by Vermilion Spur C846 with a calf by Sterling Pacific 904 at side; to Deep Creek Angus Ranch, Midland, SD, \$12,000. — **JIM GIES**

DIAMOND PEAK CATTLE ANNUAL FALL BULL & COMMERCIAL FEMALE SALE
Nov. 19, Loma, CO

23 18-month-old Angus and SimAngus bulls \$4,550
45 3-year-old bred cows 2,365
627 Bred heifers 2,205
148 Bred solid mouth cows 2,127
189 Bred short-term cows 1,363
Auctioneer: Trent Stewart
TOPS—Angus bull: 284J; \$6,750. **SimAngus bull:** 053J; \$6,500. **Commercial females:** 66 head of J Spear and Queen of Diamonds heifers; \$2,600. **3-year-old bred cows:** 11 head; \$2,450. **Bred solid mouth cows:** 88 head; \$2,265. **Bred short-term cows:** 62 head; \$1,500.

— **JIM GIES**
GREEN MOUNTAIN ANGUS RANCH BULL SALE
Nov. 18, Ryegate, MT
232 Total bulls \$6,412
1 Donation heifer 17,000
24 Fall yearling bulls 7,395
208 Bull calves 6,237
100 Commercial bred heifers 2,075
Auctioneer: Roger Jacobs
TOPS: GMAR Trail Boss K039, 1/25/22 by Brumfield Trail Boss 057; to Griffen Land and Cattle, Billings, MT, \$26,000. GMAR Sale Crusher 101J, 12/1/21 by Marcys Scale Crusher; to Darrell and Pat Howard,

Dunn Center, ND, \$24,000. GMAR Flagstone 026J, 9/7/21 by Baldrige Flagstone F411; to Wilson Angus, Watford City, ND, \$19,000. GMAR Sale Crusher K056, 1/26/22 by Marcys Scale Crusher; to Darrell and Pat Howard, Dunn Center, ND, \$16,500. GMAR Trail Boss K004, 1/17/22 by Brumfield Trail Boss 057; to Hooks Ranch, Reed Point, MT, \$15,500. GMAR Loaded K104, 1/29/22 by Varilek Loaded 0038 32; to Bobcat Angus, Galata, MT, \$15,000. GMAR Trail Boss K123, 1/30/22 by Brumfield Trail Boss 057; to Darrell and Pat Howard, Dunn Center, ND, \$15,000. — **DEVIN MURNIN**



SALE CALENDAR

Sale Calendar is a service to our advertisers. There is a minimum advertising requirement to be eligible to be listed in the Sale Calendar. Contact your fieldman for more information or to have your date added to the Sale Calendar. We will only run auction sale dates or private treaty start dates.

ALL BREEDS

Nov. 30 — Utah Cattlemen's Association, Bull Sale, Salt Lake City, UT
Dec. 6-7 — PAYS Blue Ribbon, Female Sale, Billings, MT
Dec. 12 — Northland, Female Sale, Billings, MT
Jan. 24-28, 2023 — Red Bluff, Bull Sale, Red Bluff, CA

ANGUS

Nov. 28 — Stevenson Diamond Dot, Bull & Female Sale, Hobson, MT
Nov. 29 — Stevenson Angus Ranch, Bull & Female Sale, Hobson, MT
Nov. 30 — Beef Country Breeders, Bull Sale, Columbus, MT
Dec. 1 — Sitz Angus, Bull Sale, Harrison, MT
Dec. 2 — KG Ranch, Bull & Female Sale, Three Forks, MT
Dec. 2 — Schurrtop Ranch, Bull Sale, McCook, NE
Dec. 3 — Currant Creek Angus, Bull Sale, Roundup, MT
Dec. 3 — Reverse Rocking R, Bull & Female Sale, Maxwell, NM
Dec. 5 — Jacobsen Ranch, Bull Sale, Great Falls, MT
Dec. 5 — TK Angus, Bull & Female Sale, Valentine, NE
Dec. 8 — ZumBrunnen Angus, Bull & Female Sale, Lusk, WY
Dec. 9 — WMR Livestock, Bull Sale, Three Forks, MT
Dec. 10 — Gaugler Angus, Bull Sale, Judith Gap, MT
Dec. 14 — Mitchell Angus, Dispersion Sale, Burwell, NE
Dec. 14 — Shipwheel Cattle Co., Bull Sale, Chinook, MT
Dec. 16 — Bobcat Angus, Production Sale, Great Falls, MT
Jan. 12, 2023 — National Western Foundation, Female Sale, Denver, CO
Jan. 19 — Thomas Angus Ranch, Bull Sale, Cheyenne, WY
Jan. 24 — Huwa Cattle, Bull Sale, Roggen, CO
Jan. 25 — Bear Mountain Angus, Bull Sale, Palisades, NE
Jan. 26 — Marcy Cattle Co., Bull Sale, Gordon, NE
Jan. 27 — McConnell Angus, Production Sale, Dix, NE
Jan. 27 — Ruggles Angus, Production Sale, McCook, NE
Jan. 28 — Baldrige Performance Angus, Bull Sale, North Platte, NE
Jan. 30 — APEX Cattle, Bull & Female Sale, Dannebrog, NE
Feb. 3 — Poss Angus, Bull Sale, Scotia, NE
Feb. 3 — Spring Valley Angus Ranch, Bull Sale, Burwell, NE
Feb. 8 — Jindra Angus, Production Sale, Clarkson, NE
Feb. 8 — Meadow Acres Angus Ranch, Production Sale, Echo, OR
Feb. 9 — Booth Cherry Creek, Bull Sale, Veteran, WY
Feb. 11 — Schaff Angus Valley, Production Sale, St. Anthony, ND
Feb. 15 — Shaw Cattle Company, Bull Sale, Caldwell, ID

Feb. 20 — Weaver Ranch, Production Sale, Fort Collins, CO
Feb. 26 — Colyer Herefords, Production Sale, Bruneau, ID
Mar. 2 — Parry Angus and Simmental Ranch, Production Sale, Sterling, CO

CHAROLAIS

Dec. 2 — Schurrtop Ranch, Bull Sale, McCook, NE

HEREFORD

Nov. 30 — Beef Country Breeders, Bull Sale, Columbus, MT
Dec. 2 — Western States Hereford Show, Bull & Female Sale, Reno, NV
Dec. 8 — Berry Herefords, Bull Sale, Cheyenne, WY
Jan. 16, 2023 — Van Newkirk Herefords, Production Sale, Oshkosh, NE
Feb. 2 — Ridder Herefords, Production Sale, Callaway, NE
Feb. 4 — Upstream Herefords, Production Sale, Taylor, NE
Feb. 15 — Shaw Cattle Company, Bull Sale, Caldwell, ID
Feb. 26 — Colyer Herefords, Production Sale, Bruneau, ID

MAINE ANJOU

Jan. 14, 2023 — Western Elite, Female Sale, Denver, CO

RED ANGUS

Dec. 7 — Big Sky Elite, Female Sale, Logan, MT
Dec. 12 — Cross Diamond Cattle Co., Bull & Female Sale, Bertrand, NE
Dec. 16 — 5L Red Angus, Bull Sale, Sheridan, MT
Dec. 20 — Calvo Red Angus, Bull Sale, Bassett, NE
Feb. 15, 2023 — Shaw Cattle Company, Bull Sale, Caldwell, ID

SALERS

Dec. 5 — Jacobsen Ranch, Bull Sale, Great Falls, MT

SIMANGUS

Dec. 3 — Leachman Cattle of Colorado, Bull Sale, Loma, CO
Dec. 3 — T-Heart Ranch, Female Sale, La Garita, CO
Jan. 30, 2023 — APEX Cattle, Bull & Female Sale, Dannebrog, NE

SIMMENTAL

Jan. 14, 2023 — Western Elite, Female Sale, Denver, CO
Jan. 30 — APEX Cattle, Bull & Female Sale, Dannebrog, NE
Mar. 2 — Parry Angus and Simmental Ranch, Production Sale, Sterling, CO

SOUTH DEVON

Nov. 30 — Beef Country Breeders, Bull Sale, Columbus, MT

STABILIZER

Dec. 3 — Leachman Cattle of Colorado, Bull Sale, Loma, CO
Dec. 15 — Leachman Cattle of Colorado, Bull Sale, San Saba, TX
Jan. 12, 2023 — Leachman Cattle of Colorado, Bull Sale, Fort Collins, CO

COMMERCIAL

Dec. 3 — T-Heart Ranch, Female Sale, La Garita, CO
Dec. 7-9 — Montana Stockgrowers Convention, Billings, MT

HORSE

Jan. 24-28, 2023 — Red Bluff, Gelding Sale, Red Bluff, CA

DOG

Jan. 24-28, 2023 — Red Bluff, Stock Dog Sale, Red Bluff, CA

BUYING
SELLING
TRADING
OFFERING

THE BULL PEN

Your BULL PEN ad will also be added to the Classified Corral online, where we get 7,500 viewers a month. 3 weeks, \$95 per insertion
 • 6 weeks, \$85 per insertion
 • 12 weeks, \$75 per insertion for a 3.2" x 2" boxed ad. Call 800-850-2769, email to advertising@wlj.net or fax your copy to 303-722-0155.



Angus Bulls for Sale

Private Treaty Sales
Big, Stout and Range Ready
 Performance Tested
 Fertility Tested
 DNA Enhanced EPD's
 Priced for the Commercial Cowman

Contact: Kevin Gallagher
 512.634.6510
kevin@brumfieldangusfarms.com
www.BrumfieldAngusFarms.com

Annual Bull & Female Production Sale

December 8, 2022


At the Ranch near Lusk, Wyoming

CALVING EASE • GROWTH • PAP


Heifer Giveaway Drawing at the end of the sale for a ny youth in attendance ages 6-17!

Selling 100 Bulls 40 Females

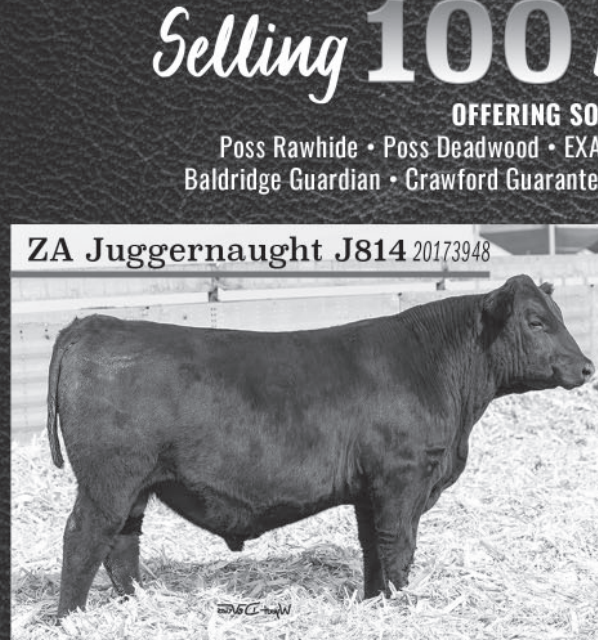
OFFERING SONS AND DAUGHTERS OF
 Poss Rawhide • Poss Deadwood • EXAR Stock Fund • Baldrige Pappy • Tehama Tahoe
 Baldrige Guardian • Crawford Guarantee • Haynes Papa • Chestnut Redemption • DB Iconic



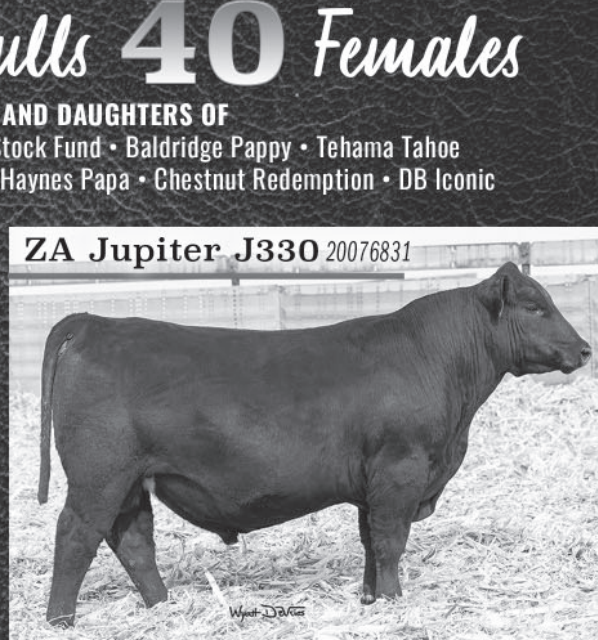
ZA Juggernaught J814 20173948




ZA Jupiter J330 20076831



Hoover No Doubt x Baldrige Xpand X743




E&B Plus One x G A R Composure



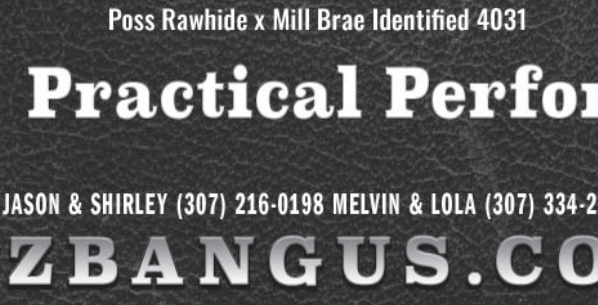
ZA Rita J119 20069230

Bred to EB Dutton Due 1/30/23




ZA Countess J074 20076736

Bred to Fua Baldrige Jumpstart Due 1/30/23



Poss Rawhide x Mill Brae Identified 4031



Baldrige Pappy x V N A R Ten X 4004

Practical Performance by Design

JASON & SHIRLEY (307) 216-0198 MELVIN & LOLA (307) 334-2265

ZBANGUS.COM

Sponsored by **DVAuction**
 Broadcasting Real-Time Auctions

Sponsored by **K**
 KODON

Sale Managed By
CHRIS EARL (630) 675-6559
WES TIEMANN (816) 244-4462
KODY FLEEMAN (573) 881-0117

MARKET NEWS

MARKET SITUATION REPORT

Due to the Thanksgiving holiday, WLJ went to press early on Tuesday, Nov. 22.

MARKET AT A GLANCE	This Week: 11/22/2022	Week Ago	Year Ago	
Choice Fed Steers	N/A	N/A	152.02	134.00
CME Feeder Index	174.64	▼	175.39	157.43
Boxed Beef Average	N/A	N/A	257.10	278.64
Average Dressed Steers	N/A	N/A	241.94	212.00
Live Slaughter Weight*	N/A	N/A	1,384	1,600
Weekly Slaughter**	N/A	N/A	671,000	677,000
Weekly Beef Production***	N/A	N/A	558.2	562.0
Hide/Offal Value	N/A	N/A	14.86	15.02
Corn Price	6.57	▼	6.68	5.80

*Average weight for previous week. **Total slaughter for previous week. ***Estimated year-to-date figure in million pounds for previous week.

BEEF REPORT: Weekly Composite Boxed Beef												
WEEK ENDING	COMPREHENSIVE Loads/Price		PRIME Loads/Price		BRANDED Loads/Price		CHOICE Loads/Price		SELECT Loads/Price		UNGRADED Loads/Price	
November 21	6,514	257.95	218	336.69	1,195	265.27	2,185	255.05	777	232.05	2,140	213.84
November 14	6,337	260.46	167	342.17	1,195	268.67	1,795	258.32	841	232.31	2,338	215.76
November 5	6,493	257.01	182	343.23	1,102	267.65	2,097	258.72	901	230.42	2,210	215.83
October 28	6,818	255.28	187	339.98	1,172	263.48	2,139	253.54	806	224.71	2,515	214.95

Selected Auction Week Ending November 22, 2022

Feeder prices for steers & heifers reflect medium and large 1 cattle, unless otherwise noted; * Indicates medium and large 1-2											
DATE MARKET		STEERS / HEIFERS						SLAUGHTER COWS		PAIRS REPLACEMENTS	
		200-300 lb.	300-400 lb.	400-500 lb.	500-600 lb.	600-700 lb.	700-800 lb.	800 lb. -up	SLAUGHTER BULLS		
November 18	Blackfoot, ID	N/A	170-221 160-183	170-220 155-189	160-212 150-175	157-181 145-172	150-169 145-160	140-164 135-155	57-75 70-87		
No report available Burley, ID											
No report available Emmett, ID											
November 19	Eugene, OR	986	140-161	130-151 110-139	130-150 110-129.50	120-142 108-125	120-138 95-114	115-134 90-112	60-74	80-92 400-1,100	
November 21	Madras, OR	847							70-85 80-91	1,100-2,125	
November 16	Vale, OR	2,784	180-248 155-193	167-241 157-184	165-203 150-168.50	155-180.50 147-166	151-172 127-158	140-155	65-76 71-91		
No report available Davenport, WA											
No report available Toppenish, WA											
No report available Orland, CA											
November 21	Escalon, CA	N/A	145-174 125-156		125-161 120-153		120-146 100-135	100-125 95-115	55-68 80-100	1,000-1,300	
No report available Famoso, CA											
No report available Galt, CA											
No report available Turlock, CA											
November 8	Salina, UT	2,764	165-250 145-208	157-232.50 140-200	150-222.50 135-188	145-195 133-177.50	140-178 130-159	137-166 128-155	130-166 122-159	45-81.50 68-91.50	
November 21	Iowa	14,450	200-250 158-209	186-240 160-205	171-232 149-187	151-202 142-199.50	152-195.75 143-176.25	140-185.35 140.50-170.75	50-100 32-95		
No report available Miles City, MT											
No report available Bassett, NE											
November 19	Ericson, NE	2,940	241-249 207-225	215-242 192-218	197-230 175-198	185-218.75 165-191	171-174 175	169 166		1,750	
November 22	Imperial, NE	700	174*	223.50 170*	204-216 142-155*	112-117.50*	173.50-177.50 172.50-173.50	157.50			
No report available Kearney, NE											
November 18	Lexington, NE	3,044	243 210-212	207-226 180-208.75	191-219 173-194.50	180-203 170-184.75	170-190.50 165-175.50				
No report available Ogallala, NE											
No report available Valentine, NE											
November 18	Herreid, SD	6,836	208	221-250.50 196.50-209	201-233 175-215	184.75-209 171-186.50	179-190 168.50-173	171.75-190.25 170-180			
November 18	Torrington, WY	10,488	249-262 215-225	220-258 195-216	197-222 171-202.50	181-201 175-184	177-190 172-177	168-184.50 177-179	72-81 90-96	1,125-2,150	
No report available Willcox, AZ											
November 21	Colorado	18,891	227.50	220-240 180-191	200-239 155-212	175.50-210 159-183.50	167-193.50 150-173	160-181.50 151-164	120-174.50 144.50-164	51-95 77-105	1,500-2,300 560-1,450
No report available La Junta, CO											
No report available Loma, CO											
No report available Dodge City, KS											
No report available Pratt, KS											
No report available Salina, KS											
No report available Clovis, NM											
No report available El Reno, OK											
No report available McAlester, OK											
November 21	Oklahoma City, OK	8,950	221 171-177	197-231 165-217	188-226 150-198	167-215 154-184	150-175.50 135-169.50	159-181 128-162	150-180		
November 18	Cuero, TX	2,319	150-240 103-152	164-242 135-209	165-218 146-208	151-190 139-172	145-160 136-159	140-152 132-144	47-80 78-97	550-1,300	
November 17	Dalhart, TX	2,704	222-257 163-228	205-232 156-200	179.50-212 167-184	167-184.50 140-173	158.50-178.75	150-174 138.50-160	55-81 90-91	1,000-2,100	
No report available San Angelo, TX											
No report available Tullia, TX											
November 18	Alabama	14,656	220	187-205 150-175	171-197 140-169	155-183 135-160	140-172 122-155	137-165 112-151	139-161	52-80 75-110	750-2,150 639-1,625
November 22	Lexington, KY	850	152-165*	170-207* 141-157*	170-207* 140-154*	154-168* 141-153*	150-177* 137-168*	144-178* 117-120*	130-167.50* 99-119*	62-92 81-122	850-1,250 750-1,025
November 21	Joplin, MO	11,936		231-250 185	203-235 170-184	190-210 164-182	179-200 163-176	177-191 164-175	168.50-186 130-167		
November 21	Tennessee	8,124	167.50-210* 135-185*	155-202.50* 120-175*	140-191* 112.50-172.50*	134-184* 113-158*	129-169* 102-161.75*	131-172.75* 110-137.50*	120-148* 100-125*	48-103 65-118	1,075-1,100 665-1,020
November 21	Virginia	4,232		142-200 120-164	150-196 110-160	145-192 120-148	134-174 120-149	132-162 114-144	76-150.50 88-146		

CATTLE FUTURES: CME Live Cattle						
	11/18	11/21	11/22	11/23	11/24	High* Low*
Dec.	15308	15355	15380	N/A	N/A	15380 13055
Feb.	15585	15673	15643	N/A	N/A	15703 14003
Apr.	15925	16013	15990	N/A	N/A	16013 15388
Jun.	15513	15618	15603	N/A	N/A	15850 15310

CATTLE FUTURES: CME Feeder Cattle						
	11/18	11/21	11/22	11/23	11/24	High* Low*
Jan.	18078	18263	18168	N/A	N/A	18703 16958
Mar.	18313	18510	18458	N/A	N/A	18748 17595
Apr.	18610	18805	18793	N/A	N/A	18805 18303
May	18873	19055	19070	N/A	N/A	19070 18873

*High and low figures are for the life of the contract.

FED CATTLE TRADE			
	Head Count	Avg. Weight	Avg. Price
WEEKLY WEIGHTED AVERAGES			
Live FOB Steer	N/A	N/A	N/A
Live FOB Heifer	N/A	N/A	N/A
Dressed Del Steer	N/A	N/A	N/A
Dressed Del Heifer	N/A	N/A	N/A

SAME PERIOD LAST WEEK			
Live FOB Steer	12,429	1,512	152.02
Live FOB Heifer	7,613	1,300	151.41
Dressed Del Steer	5,366	976	241.94
Dressed Del Heifer	1,476	867	241.52

SAME PERIOD LAST YEAR			
Live FOB Steer	66	1,600	134.00
Live FOB Heifer	400	1,225	135.00
Dressed Del Steer	494	961	212.00
Dressed Del Heifer	N/A	N/A	N/A

NATIONAL WEEKLY FED BEEF SLAUGHTER VOLUME: NOVEMBER 20		
	Domestic	Imported
Forward Contract	35,659	3,666
Formula	265,815	629
Negotiated Cash	97,068	290
Negotiated Grid	44,656	758
Packer Owned	11,887	0
Total	455,085	5,343

SLAUGHTER FORWARD CONTRACTS		FORWARD BEEF SALES	
Delivery Month		Neg. Sales 0-21 days	1,874
Nov. '22	158,544	Neg. Sales 21+ days	1,080
Dec. '22	114,244	Formula sales	3,374
Jan. '22	123,858	Forward contract sales	187
Feb. '23	90,062	Domestic sales	5,693
Mar. '23	107,198	NAFTA Exports	116

CANADIAN LIVESTOCK PRICES & FEDERAL INSPECTED SLAUGHTER FIGURES			
Alberta Direct Sales (4% shrink)		Price	Weekly Change
Slaughter Steers, mostly Choice & Select 1-3, 1300-1500 lbs		136.27	+2.10
Slaughter Heifers, mostly Choice & Select 1-3, 1200-1400 lbs		135.50	+2.78
Ontario Auctions			
Slaughter Steers, mostly Choice & Select 1-3, 1300-1500 lbs		N/A	N/A
Slaughter Heifers, mostly Choice & Select 1-3, 1200-1400 lbs		N/A	N/A
Slaughter Cows, Cutter and Utility 1-3, 1100-1400 lbs		71.02	+1.17

*Price comparison from one week ago.

Average feeder cattle prices (CND) for week ending Friday, November 11, 2022			
Steers:	Alberta	Saskatchewan	Ontario
501-600 lbs	198.80	199.24	202.45
601-700 lbs	184.03	186.03	193.53
701-800 lbs	176.92	179.97	175.3
801-900 lbs	170.69	170.98	161.86
Heifers:			
401-500 lbs	174.99	175.57	171.12
501-600 lbs	165.03	164.78	163.55
601-700 lbs	158.96	157.70	155.55
701-800 lbs	154.68	152.62	148.59

USDA MEXICO TO U.S. WEEKLY LIVESTOCK IMPORTS				
Feeder cattle imports weekly and yearly volume.				
Species	Current Week	Previous Week	Current Year-to-date	Previous Year-to-date
Feeder Steers	32,123	21,959	709,244	955,394

USDA WEEKLY IMPORTED FEEDER CATTLE			
Friday, November 18, 2022			
Mexico to TX. & NM. Weekly Feeder Cattle Import Summary			
Receipts EST:	19,000	Week Ago Act:	15,619
		Year Ago Act:	21,700
Compared to last week, steer calves and yearlings sold steady to 2.00 lower. Heifers 1.00-2.00 lower. Trade and demand moderate. The bulk of the supply consisted of steers and spayed heifers weighing 300-700 lbs.			
Feeder steers: Medium and large 1&2, 300-400 lbs 203.00-215; 400-500 lbs 183.00-194.00, few 195.00; 500-600 lbs 165.00-175.00; 600-700lbs 150.00-160.00, few 195.00. Medium and large 2&3, 300-400 lbs 188.00-200.00; 400-500 lbs 168.00-179.00; 500-600 lbs 150.00-160.00.			
Feeder heifers: Medium and large 1&2, 300-400 lbs 173.00-183.00; 400-500 lbs 163.00-173.00; 500-600 lbs 154.00-164.00; 600-700 lbs 144.00-154.00.			
(slide 10 cents on steers and heifers basis 300 lbs. All sales fob port of entry.)			

Find out how YOUR AUCTION MARKET can become a PREFERRED WLJ partner!

At no cost to you, we'll send you weekly copies of the *Western Livestock Journal* that you can share with your customers...to keep them informed of what's happening in the beef industry. There is no obligation or downside! Contact Moe at 800-850-2769 for more information!

Cattle industry dynamics finally lining up

The latest Cattle on Feed report pegs the Nov. 1 feedlot inventory at 11.706 million head, 98% of last year and the second consecutive monthly year-over-year decrease. The 12-month moving average of feedlot totals, which shows

the average feedlot total for the previous year, peaked in September 2022 (Table 1).

Feedlot inventories are expected to decrease year over year for the foreseeable future. Table 1 shows how cattle industry dynamics

have developed since the last cyclical peak, with peak totals for each category highlighted in yellow. The peak average cow herd and calf crop occurred in 2018, with the peak feeder supply noted on Jan. 1, 2019.

The combination of effects from the pandemic in 2020 and the drought since 2020 has pushed the peaks for feedlot numbers and cattle slaughter into 2022, well past the cyclical peak in the calf crop in 2018. The pandemic in 2020 caused a backlog of cattle in feedlots and in the country. As a result, the estimated feeder supply on Jan. 1, 2021, was higher than 2020.

The drought in 2021 and 2020 caused cattle to be marketed earlier than usual and resulted in reduced heifer retention and increased heifer and cow slaughter in 2021 and 2022. Early marketing of cattle, reduced heifer retention and herd liquidation have kept feedlot inventories higher in 2022 and have temporarily increased beef production. Beef production is projected at a record large 28.4 billion pounds in 2022 as a result of the highest total cattle

Table 1. Cattle Industry Dynamics, 2018-2022.

	2018	2019	2020	2021	2022
Beef Cow Inventory* (avg.)	31578.5	31514.7	31091.2	30484.4	29635.6
Calf Crop	36312.7	35591.6	35495.5	35085.4	34600
Feeder Supply**	26124.9	26553.3	25724	26214	25537.2
Feedlot Inventory, 12 month MA	11501	11612	11658	11771	11804
Month, max 12 mon. MA	Dec	Dec	Mar	Jun	Sep
Fed Slaughter	25803	26117	25302	25972	26075
Beef Cow Slaughter	3024	3190	3268	3562	3970

*+Jan-1/2; *Projected; **July 1 estimate; **January 1 estimate; All numbers in 1000 head.

slaughter in 15 to 20 years.

As 2022 comes to a close, it appears that feedlot inventories have peaked, and cattle slaughter should begin to decline in the next few months. On Oct. 1, the inventory of heifers in feedlots was higher than the previous year, with the heifer percentage of total feedlot inventories being the highest it has been in 21 years. The number of heifers in feedlots should begin to decline and will drop sharply when herd rebuilding begins. Feedlot inventories are beginning to reflect the fact that feeder cattle supplies have been declining since 2019.

With drought conditions continuing, it is unclear when herd liquidation will cease and herd rebuilding can begin. However, it is clear that feedlot production, cattle slaughter and beef production will fall in 2023. How much they will fall depends on when drought conditions will improve. Nevertheless, declining feedlot supplies mean that all levels of the cattle industry are finally on the same page and are reflecting the tighter cattle supplies in the country. — **Derrill S. Peel, Oklahoma State University Extension livestock marketing specialist**

Cattle on feed down 2%

MARKETS (from page 1)

"If this week's holiday shortened (federally inspected) slaughter comes in at the estimated 585K head, that would (be) the largest Thanksgiving week harvest since pre-2010," wrote Cassie Fish, market analyst, in The Beef.

Boxed beef prices were mixed, with the Choice cutout down about 50 cents to \$256.63 and the Select cutout up about \$2.50 to \$234.18.

"Gross packer margins narrowed last week by \$30 per head, but margins have not taken out their low made in October yet," Fish said.

The latest Cattle on Feed report released Nov. 18 reported cattle and calves on feed down 2% from last year. Placements were 6% lower than 2021, the lowest for October since the series began in 1996. Marketings of fed cattle were 1% higher, and other disappearance was 5% lower.

Feeder cattle

Feeder cattle futures were higher, with the January contract up \$1.70 to

\$181.67 and the March contract up a little over \$2 to \$184.57.

The CME Feeder Cattle Index lost 75 cents to close at \$174.64.

Corn futures were lower another week, with the December contract down 11 cents to \$6.56 and the March contract down 10 cents to \$6.59.

Missouri: Joplin Regional Stockyards in Carthage sold 12,000 head on Monday. Compared to a week earlier, feeder steers under 800 lbs. were steady with heavier weights, trading steady to \$3 higher. Feeder heifers traded steady to \$3 higher. Benchmark steers averaging 732 lbs. sold from \$177-189, averaging \$180.70.

New Mexico: Roswell Livestock Auction in Roswell sold 1,926 head Monday. Compared to the last auction, steer calves sold \$4-15 higher, with instances of \$25-30 higher on 500-550 lb. weights. Heifer calves sold \$6-18 higher. Feeder steers 600-650 lbs. sold \$3-5 higher, with 650-700 lbs. \$2-4 lower. Feeder heifers 600-650 lbs. sold \$14-19 higher, with others not com-

parable. Benchmark steers averaging 723 lbs. sold between \$163-171, averaging \$168.02.

Oklahoma: Oklahoma National Stockyards in Oklahoma City sold 9,250 head on Monday. Compared to a week earlier, feeder steers sold steady to \$2 higher. Feeder heifers sold steady to \$2 lower. Benchmark steers averaging 782 lbs. sold from \$168-179, averaging \$175.69.

South Dakota: Sioux Falls Regional Cattle Auction in Worthing sold 1,927 head on Monday. Compared to a week earlier, feeder steers sold steady to \$5 higher, except 700-750 lbs., which sold \$5-7 lower. Feeder heifers sold steady to \$3 lower, except 600-700 lbs., which sold \$1-5 higher. Benchmark steers averaging 769 lbs. sold from \$178-182.50, averaging \$180.89.

— **Anna Miller, WLJ managing editor**

Due to the Thanksgiving holiday, WLJ went to press early on Tuesday, Nov. 22. This report contains information released prior to 3 p.m. on Tuesday.



DECEMBER 3, 2022

16363 Hwy 12 W, Roundup, MT
Lunch at Noon • Sale at 1pm MST
40 Spring Angus Bulls
25 Coming Two Year Old Bulls



CCAR PAYWEIGHT J324



CCAR PAYWEIGHT J552



CCAR FINAL STATEMENT J365



CCAR COWBOY UP J399



CCAR COWBOY UP J373



CCAR RECHARGE J358



CCAR CHISUM J554



CCAR YETI J309



CCAR BRONC J551



CCAR PAYWEIGHT K126



CCAR YETI K129



CCAR CHISUM K115

Gary & Phyllis Eliasson | PO Box 389 | Roundup, MT 59072
Office: 406.323.2227 | Gary Cell 406.320.1142
Tyler Cell 406.320.1415 | Phyllis Cell: 406.320.0097
Request a catalog at ccar@midrivers.com
Catalog/Videos/Online Bidding will be at www.frontierlivesale.com

WWW.CURRANTCREEKANGUS.COM

HOME OF CHOICE SANDHILL & WESTERN NEBRASKA CATTLE

Ogallala
LIVESTOCK AUCTION MARKET
OGALLALA, NE ~ 308-284-2071

Special Stocker & Feeder Sale

THURSDAY, DEC. 1, 2022

RUSHCREEK LAND & LIVESTOCK (1,020)
NORTH (400) - Ang str, 350-500#
CLUB (320) - Ang str, 350-500#
SOUTH (300) - Ang str, 350-500#

DAVID & KEN KENNEDY (300) - Ang & SimAng X str & hfrs, 475-650#

J.H. MINOR (221) - (82) Ang & Few Char X str, 500-625#, (139) Ang & Few Char X hfrs, 500-600#

MADRID CATTLE / CHRIS & JENA (220) - (100) F1 BWF str, 700-725#, (50) F1 BWF str, 500-600#, (70) F1 BWF hfrs, 550-650#

DANNY & COOKIE DICKINSON & FAMILY (210) - Ang & BWF str & hfrs, 400-500#

DOUG RENZELMAN (200) - Ang & Ang X str & hfrs, 500-600#

Many more valued animals available at www.ogallalalive.com

Jay Nordhaus 308-289-1544
Scott Van Winkle 308-289-0249
cattleusa.com
FORE sale day.



~CLM REPRESENTATIVES~

Jake Parnell	916-662-1298
George Gookin	209-482-1648
Rex Whittle	209-996-6994
Mark Fischer	209-768-6522
Kris Gudel	916-208-7258
Steve Bianchi	707-484-3903
Jason Dailey	916-439-7761
Brett Friend	510-685-4870
Tod Radelfinger	775-901-3332
Bowdy Griffen	530-906-5713

~AUCTION MARKET~

Address 12495 Stockton Blvd., Galt, CA
Office 209-745-1515
Fax 209-745-1582
Website/Market Report... www.clmgalt.com
Web Broadcast www.lmauctions.com

CALL TO CONSIGN TO THESE UPCOMING WESTERN VIDEO MARKET SALES:

Jan. 8
Jan. 27

CATTLEMEN'S FALL

SPECIAL FEEDER SALES
SELECT WEDNESDAYS AT 12 NOON
November 30 • December 7

SPECIAL PAIR AND BRED COW SALE
WEDNESDAY, DECEMBER 14

SPECIAL FEEDER SALE
CUSTOMER APPRECIATION LUNCH
WEDNESDAY, DECEMBER 21
Last Special 2022 and
Annual CLM Customer Appreciation Lunch

NO SALES SO OUR CLM FAMILIES CAN CELEBRATE THE HOLIDAYS ON:
WEDNESDAY, DECEMBER 28
WEDNESDAY, JANUARY 4

JOIN US FOR OUR BIRTHDAY SALE OF 2023
WEDNESDAY, JANUARY 11

CLASSIFIED CORR

call: 1-800-850-2769 • click



CLASSIFIED ADVERTISING GENERAL INFORMATION

ADVERTISING RATES

BY THE WORD: 90 cents per word for each insertion.
MINIMUM WORD RATE: 17 words or fewer, \$15.30 one time.
MAD RATES: (Bold headline) \$2 more per insertion for your phone number, email and/or website, plus first 2 or 3 words in bold print. (Applies to word ads only)
BOXED AND BOLD: (Boxed with bold text) \$5 more per insertion. (Applies to word ads only)
BLIND BOX AD: We will assign your confidential number and forward replies to you. **Cost is \$12 per 3 issues** for mail and handling service.

BOXED DISPLAY ADS: \$30 per column inch for each insertion.

MINIMAL ARTWORK: No additional charge.

BLACK AND WHITE PHOTO: \$10, LIMIT OF ONE.

COLOR PHOTO: \$35 EACH.

DISCOUNTS: 5% for running your ad 3 to 5 times; 10% for 6 times or more; up to 35% for 52 times.

SUGGESTION FOR CORRECT WORD COUNT: Be sure to include your name, address and phone number in the count, as well as all initials and abbreviations. Hyphenated words count as two.

TEARSHEETS: Available upon request only. Can be faxed or mailed.

CONDITIONS

EMPLOYMENT WANTED ADS: Must be paid in advance.

DEADLINE: Tuesday at 4:30 p.m. MTZ, the week prior to publication date. Newspaper is published on Mondays.

LIABILITY: Advertiser is liable for content of advertisement and any claims arising therefrom made against the publication.

Publisher is not responsible for errors in phoned-in copy. Publisher reserves the right to refuse any advertising not considered in keeping with the publication standards.

COMMISSIONS: Classified advertising is NOT agency commissionable.

CLASSIFIED INDEX

1 Employment Wanted	20H Northeast Real Estate For Sale
2 Help Wanted	20I Foreign Real Estate For Sale
3 Situations Wanted	21 Real Estate Wanted
4 Distributors Wanted	22 Real Estate Rent/Lease/Trade
5 Appraisers	23 Pasture Available
6 Auctions	24 Pasture Wanted
7 Auctioneers	25 Mineral Rights
8 Feedlots	26 Hay/Feed/Seed
9 Lost Cattle	27 Irrigation
10 Cattle for Sale	28 Ag/Industrial Supplies
11 Cattle Wanted	29 Fencing/Corrals
12 A.I./Semen/Embryos	30 Equipment For Sale
13 Brands	31 Equipment Wanted
14 Dogs for Sale	32 Building Materials
15 Horses/Mules	33 Trucks/Trailers
16 Bison/Bufalo	34 Tractors/Implements
17 Sheep/Goats/Hogs	35 Business Opportunity
18 Livestock Supplies	36 Loans
19 Ranch/Livestock Services	37 Insurance
20 Real Estate Opportunities	38 Financial Assistance
20A Pacific Real Estate For Sale	39 Tech/Books/Art/Etc.
20B Intermountain Real Estate For Sale	40 Miscellaneous
20C Mountain Real Estate For Sale	41 Lost/Found
20D Southwest Real Estate For Sale	42 Personal
20E Plains Real Estate For Sale	43 Schools
20F Midwest Real Estate For Sale	44 Auctioneering Schools
20G Southeast Real Estate For Sale	

CLASSIFIED CORRAL

1-800-850-2769 • Fax: 303-722-0155
 Website: www.wlj.net • Email: classified@wlj.net

DO NOT PHONE IN RESPONSES TO BLIND BOX ADS.
ADVERTISERS' NAMES AND LOCATIONS ARE CONFIDENTIAL.
INCLUDE THE AD DEPARTMENT NUMBER IN YOUR EMAIL RESPONSE OR ON YOUR ENVELOPE AND YOUR REPLY WILL BE PROMPTLY FORWARDED.



2for1

PLACE A CLASSIFIED AD, SEE IT IN PRINT & ONLINE

CLASSIFIED ADS WORK!

www.wlj.net

Call & schedule your classified ad today!
800-850-2769

classified@wlj.net
 303-722-0155 Fax

JOBS
2

Help Wanted

REPUTED NORTHWEST COW-CALF RANCH seeks general manager with livestock and business skills. Great opportunity. Salary, benefits and housing all first class. Resume required - education and experience. Inquiries strictly confidential. Send resume by email: Classified@wlj.net (Subject line: WLJ Box #916) or mail to: Western Livestock Journal, ATTN: Box #916, 7355 E. Orchard Rd. #300, Greenwood Village, CO 80111.

HELP WANTED
 High-end technician/fabricator: full time for hay, wheat, cattle and other enterprises. Must be highly proficient in all types of repair work. TRUCK DRIVERS NEEDED: home evenings and weekends. CDL preferred. Email resume to b1maiden@yahoo.com or call (509) 520-3167.

GREAT OPPORTUNITY! RANCH MANAGER NEEDED
 NW Colorado mountain ranch is seeking responsible, motivated self-starter, experienced in most phases of a cattle ranch operation: fencing, irrigation, haying and equipment maintenance. BE YOUR OWN BOSS. Family housing provided. Send resume by email: Classified@wlj.net (Subject line: WLJ Box #914) or mail to: Western Livestock Journal, ATTN: Box #914, 7355 E. Orchard Rd. #300, Greenwood Village, CO 80111.

Serving Ag Personnel for 63 Years
GET TOP DOLLAR!!!
Hansen Agri-PLACEMENT
 FEEDYARD MANAGER (NE).....\$110K±
 RANCH MANAGER (SD).....\$75K±
 HAY PRODUCTION MANAGER (CO).....\$75K±
 Call Eric 308/382-7351
 www.hansenagriplacement.com

10

Cattle For Sale

REGISTERED ANGUS SEED-STOCK: Noah's Angus Ranch, Angus cattle since 1955. Cambridge, ID 208-257-3686, c:208-550-0531, www.noahsangusranch.com.

REGISTERED TEXAS LONGHORNS FOR SALE
 Featured in September 2020 American Beef Producer magazine. Gentle pairs, steers, heifers, solid and colorful bulls. Foraging, hardy, low-maintenance cattle, traffic-stopping colors. Cross breed with your herd for easy calving, robust calves resistant to disease. Fascinating, fun to show, simple handling. Westhaven Ranch Tel: 209-274-9917, email: swestmoore@gmail.com, website: www.westhavenlonghorns.com.

150 Bulls For Sale
 Home of 2 Bar Twenty X
2 Bar Angus
 Hereford, Texas
 806/344-7444
 877/2BAR-ANG
 www.2barangus.com

J. G. Angus Ranch
 Bulls & Females For Sale
 John Goldbeck, Owner
 707/769-8651
 5725 Chileno Valley Road • Petaluma, CA 94952
 www.jgangusranch.com

14

Dogs For Sale

CATAHOULA MCNAB PUPPIES FOR SALE. Excellent for ranching, hunting and security. 707-406-0250 or email izzy puppies22@gmail.com for pictures/details. Ready December 10th in Humboldt County, CA.

14

Dogs For Sale



REGISTERED BORDER COLLIES
 Blue merle females, red male, red female, black female are available. Siblings to sire have brought \$45K and \$30K through Red Bluff sale. Both parents are working dogs. Great instinct and great family dogs. Find Logan Ipsen on Facebook for additional pics or email logan.ip sen@gmail.com.

18

Livestock Supplies



POWDER RIVER LIVESTOCK EQUIP.
 Best prices with delivery available.
 Conlin Supply Co., Inc.
 Oakdale, CA
 Ask for Larry or Albert
209/847-8977

20A

Real Estate Pacific

KNIFE LAND COMPANY
 EST 1944

SOLD
 Orofino, ID
 953± Acres - \$4,284,000
 Cascade, ID
 202± Acres - \$3,500,000

NEW
 Enterprise, Oregon
 17,088± total sf luxury ranch style home on 235± acres with a creek, 200± acres irrigated, 3 pivots, a manager's home, and gorgeous mountain views. **\$15,479,000**

Buying or Selling? Call today!
 (208) 345-3163 • knipeland.com

20D

Real Estate Southwest

ARIZONA RANCHES: 22,000± acre central AZ ranch, 200+ head yearlong, plus up to 2,500 stockers seasonally. Arizona state plus small BLM grazing leases, small feedyard, modest headquarters on 10 deeded acres. \$1,200,000. Larger ranches available. — Former ranch homestead: 1,056 sq. ft. house built in 1935 with fireplace, kitchen, private well, electric power & phone. Feels remote with mountain views & thousands of acres of open space but sits near a highway. Close to shopping & medical facilities, plus Tucson & Phoenix Sky Harbor airports. \$390,000. Harley Hendricks Realty, 877-349-2565.

24

Pasture Wanted

WINTER PASTURE wanted in California for yearlings. Large quantities. 541-823-2933.

20C

Real Estate Mountain

20C

Real Estate Mountain

20C

CONDON RANCH FOR SALE
 Logan County, CO
 Offered 3 ways - Ranch Unit OR West Unit / East Unit

Ranch Unit | 19,376± Total Acres
 17 pastures/18 Stock Wells
 2 Livestock Working Facilities
 Asking Price: \$12,350,000

West Unit | 11,500± Acres
 9 Pastures / 10 Stock Wells
 Livestock Working Facilities
 Asking Price: \$6,465,000

East Unit | 7,876± Acres
 8 Pastures / 8 Stock Wells
 Livestock Working Facilities
 Asking Price: \$5,885,000

RECK AGRI REALTY & AUCTION
 For Further Information:
 Marc Reck, Broker
 Ben Gardiner, Broker Associate

970-522-7770 or 1-800-748-2589 | reckagri.com

20D

Real Estate Southwest

20D

Real Estate Southwest

27

Irrigation

HDPE PIPE FOR RANCH WATER SYSTEMS
 Fair prices, good service, rancher owned. Quantities up to truckloads. Delivery available throughout the West.
775-657-1815

30

Equipment For Sale

NEED EXTRA INCOME?
 Advertise a hunting or fishing lease!
 Call NOW!
 800-850-2769

43

Schools

GET THOROUGH PRACTICAL TRAINING IN:
 Pregnancy testing—A.I.
 herd health—calf delivery and care. Many additional subjects.

CATTLEMEN
 Our business is to help you improve your business. Learn more by working with live animals under expert supervision.

GRAHAM SCHOOL, INC.
 Dept. WLJ • 641 W. Hwy 31 Garnett, KS 66032
785/448-3119
 www.grahamschoolforcattlemen.com
 Over 100 years of continuous service

20C

Real Estate Mountain

20C

Real Estate Mountain

20D

Real Estate Southwest

20D

Real Estate Southwest

TANK COATINGS ROOF COATINGS
 Available for Metal, Composition Shingles or Tar Roofs. Long lasting and easy to apply. We also manufacture Tank Coatings for Concrete, Rock, Steel, Galvanized and Mobile tanks.
 Call for our FREE CATALOG.
VIRDEN PERMA-BILT CO.
806/352-2761
 www.virdenproducts.com

STAY UP TO DATE
 facebook
 twitter
 Connect, learn & join in on the conversation.

It's all happening online



VIDEO AUCTION

Nov. 17, Hudson Oaks, TX
Cattle producers offered over 26,000 head of calves, yearlings and bred stock from 21 states for this auction. Cattle were sold on contract to deliver immediately through August 2023. The market continues to guess which will prevail: the drought conditions or herd rebuilding. If Superior's market report and bred stock offering are any indication, herd rebuilding and optimism are returning, with a bullish market report seen across all classes of cattle.

Regions 3/4/5/6 feeder steers witnessed strong demand and higher prices across all weights. Lighter steers under 700 lbs. were \$4-8 higher, and heavier weights saw an increase of \$12. Feeder heifers were also in strong demand, moving at \$3-6 higher than the last test. Regions 1 and 2 feeder steers and heifers were only lightly tested but saw demand at \$5-7 higher. Beef-dairy crosses also were in high demand, being rewarded at \$8-10 higher. Regions 1 and 2 weaned calves were again in limited supply. Regions 3/4/5/6 weaned calves were well received, with lighter weights under 550 lbs. selling fully steady to \$6-15 higher. There was some strong buying on bred heifers, which saw premiums of \$2,000 per head.

TOPS—Feeder steers: Walking Cane Ranch, Caddo, TX, sold 70 feeder steers @ 600 lbs. VAC 45, Ranchers Connecting Ranchers, NHTC, Verified Natural Beef, Veg. Fed Approved. Out of Gardiner influence Angus cows by Gardiner & Express Angus bulls. BWF out of Angus influence cows by Van Newkirk Hereford bulls. \$188.50, Nov. 20-25 delivery. Ray Brett Farm, Louisville, GA, sold 11 feeder steers @ 625 lbs. VAC 60, Owner Certified Natural Plus. Out of Angus & Angus Charolais cross cows by Angus bulls. Approx. 10 smokey heifers. Steers & heifers sell at same price & weigh together. \$168, Nov. 21-Dec. 2 delivery. Joel Ray Pecha, Meno, OK, sold 70 feeder steers @ 650 lbs. VAC PRECON. English & English cross. Pred. black hided, balance few Charolais cross, red & RWF. \$186, Nov. 21-Dec. 9 delivery. King Cattle Co., Nashville, AR, sold 136 feeder steers @ 725 lbs. VAC 60, Superior Verified, NHTC, Verified Natural Beef, Veg. Fed Approved, Beef CARE Certified. Out of Angus, Brangus & English Exotic cross cows by Logterman Hereford & a few SimAngus bulls. Black & BWF. \$185, Nov. 21-Dec. 5 delivery. Helmcamp Land & Cattle Co. LLC/Rick Helmcamp, Buffalo, TX, sold 136 feeder steers @ 750 lbs. VAC 60, Superior Verified, NHTC, Verified Natural Beef, Veg. Fed Approved, Superior Progressive Genetics, BQA certified. Out of Angus cross, Brangus cross & Braford cross cows with 3/8 or less Brahman influence by outstanding Angus (R.A. Brown & Bradley 3 Ranch) bulls. 100% black hided. \$182, Nov. 28-Dec. 2 delivery. Mark Beauprez, Byers, CO, sold 71 feeder steers @ 715 lbs. VAC 60. Out of Angus & Angus cross cows by SimAngus cross & Black Maine Anjou Angus cross bulls. Approx. 90% black hided. \$180, Nov. 21-30 delivery. Mack Morrell, Bicknell, UT, sold 70 feeder steers @ 775 lbs. VAC 45, Superior Verified, NHTC, Verified Natural Beef, Veg. Fed Approved. Angus & Angus cross. Sired by Confidence, Final Answer, Capitalist, Consensus, Timberline, Center Fire, Stellar & Commodore bulls. 100% black & BWF. \$190, Dec. 5-15 delivery. **Feeder heifers:** King Cattle Co., Nashville, AR, sold 135 feeder heifers @ 650 lbs. VAC 60, Superior Verified, NHTC, Verified Natural Beef, Veg. Fed Approved, Beef CARE Certified. Out of Angus, Brangus & English Exotic cross cows by Logterman Hereford & a few SimAngus bulls. Black & BWF. \$188.50, Nov. 21-Dec. 5 delivery. Helmcamp Land & Cattle Co. LLC/Rick Helmcamp, Buffalo, TX, sold 144 feeder heifers @ 700 lbs. VAC 60, Superior Verified, NHTC, Verified Natural Beef, Veg. Fed Approved, Superior Progressive Genetics, BQA certified. Out of Angus cross, Brangus cross & Braford cross cows with 3/8 or less Brahman influence by outstanding Angus (R.A. Brown & Bradley 3 Ranch) bulls. 100% black hided. \$174, Nov. 28-Dec. 2 delivery. Gene Scivally Cattle, Amarillo, TX, sold 68 feeder heifers @ 700 lbs. VAC 60, Superior Verified, NHTC, Superior Progressive Genetics, BQA certified. Out of reputation Angus Hereford F1 baldy (Van Newkirk genetics) cows by RA Brown Black Angus bulls. 100% BWF or black mottley face. \$185, Nov. 21-23 delivery. Phil Dirks, Ingalls, KS, sold 469 feeder heifers @ 740 lbs. Angus, Angus cross, English cross & Charolais cross. Approx. 75% black hided. \$164.50, Nov. 28-Dec. 9 delivery. Mack Morrell, Bicknell, UT, sold 70 feeder heifers @ 725 lbs. VAC 45, Superior Verified, NHTC, Verified Natural Beef, Veg. Fed Approved. Angus & Angus cross. Sired by Confidence, Final Answer, Capitalist, Consensus, Timberline, Center Fire, Stellar & Commodore bulls. 100% black & BWF. \$180, Dec. 5-15 delivery. Alan Effertz Ranch, Velva, ND, sold 70 feeder heifers @ 875 lbs. VAC 60, Samson, NHTC, Verified Natural Beef, Veg. Fed Approved, Owner Certified Natural Plus. Out of Black & Red Angus cows by Black & Red Angus bulls. 90% black hided, balance red, depending on sort. \$179, Nov. 28-Dec. 2 delivery.

Pace Brothers, Teasdale, UT, sold 68 feeder heifers @ 730 lbs. VAC 45, Owner Certified Natural Plus, BQA certified. Out of Angus & Balancer cows by Angus (sons of Payweight, Plattemere Weigh Up, Endeavor, Sunfire & McClain) bulls. High percent AI sired. High mountain cattle from low PAP bulls, none over 40. Approx. 99% black hided. \$172, Dec. 5-20 delivery. **Beef-dairy crosses:** Penta B Cattle Co. LLC, Muleshoe, TX, sold 135 beef-dairy cross steers @ 350 lbs. VAC PRECON, Superior Verified, NHTC, other. Out of Holstein cows AI'd to Angus & SimAngus bulls. Some with white underbelly, head, socks & tip on tail. \$203, Feb. 1-March 1 delivery. Arch Diamond LLC, Portales, NM, sold 199 beef-dairy cross steers @ 482 lbs. VAC 45, Superior Verified, NHTC, Superior Progressive Genetics. Out of Holstein cows (closed herd) by ABS In Focus Beef bulls. Bulls selected for growth performance, carcass yield & quality. 100% black w/a few white socks, white belly or star. \$217, Nov. 22 delivery. S-D Feeders, Syracuse, KS, sold 154 beef-dairy cross steers @ 650 lbs. VAC 60, Superior Verified, NHTC, Superior Progressive Genetics, BQA certified. Out of Holstein cows AI'd to reg. Angus (44 Second Act X811, Quaker Hill Royal Flush, Quaker Hill Disciple, Quaker Hill Big Stuff, 2 Bar Mile High & Quaker Hill Chieftain) & Cowboy SimAngus bulls. Bred for muscling. Some w/ white underbelly, head, socks & tip on tail. \$190, July 1-Aug. 1 delivery. **Weaned calves:** Kory & Shanan Kessinger, Akron, CO, sold 95 weaned steer calves @ 550 lbs. VAC 45, Superior Verified, NHTC, Verified Natural Beef, Veg. Fed Approved, Owner Certified Natural Plus, Superior Progressive Genetics, Beef CARE Certified. Out of Angus cows by Lee's Cattle Co. reg. Black SimAngus & Kearnes reg. Black SimAngus bulls. 100% black hided. Head counts are approximate. \$220, Dec. 10-20 delivery. Mark & Diana Fillmore, Jordan Valley, OR, sold 60 weaned steer calves @ 550 lbs./45 weaned heifer calves \$10/cwt back @ 465 lbs. VAC 45, Superior Verified, Black Angus Verified Beef, NHTC, Verified Natural Beef, Veg. Fed Approved, Superior Progressive Genetics, BQA certified, Beef CARE Certified. Out of pred. Black Angus cross & a few Red Angus cross cows by Burgess Angus Ranch, 44 Farms & Riverbend (Hoover Dam, Combination, High Prime, Capitalist, Pioneer, 44 Sure Fire, 44 Revive, 44 Bragging Rights, Riverbend Entice & Exclusive) Angus bulls. 100% black hided. \$201, Nov. 21-25 delivery. Marvel Ranches, Winnemucca, NV, sold 87 weaned steer calves @ 585 lbs. VAC 45+, Superior Verified, Black Angus Verified Beef, NHTC, Verified Natural Beef, Veg. Fed Approved, Owner Certified Natural Plus, Superior Progressive Genetics, BQA certified, Beef CARE Certified. Out of Black Angus cows by Riverbend, 44 Farms & Maag reg. Black Angus bulls. 100% black hided. \$217, Nov. 21-30 delivery. Diamond P, Orangeville, UT, sold 44 weaned steer calves @ 640 lbs./35 weaned heifer calves \$10/cwt back @ 550 lbs. VAC 45+. Out of Black Angus, Angus Simmental cross & a few Angus Charolais cross cows by Black Simmental bulls. Yardley genetics. Approx. 97% black hided, two red steers. Head counts are approximate. \$176.50, Nov. 19-22 delivery. **Calves on cows:** J-T Ranch/Denis & Sarah Tibor, Hebron, ND, sold 81 steer calves @ 550 lbs. VAC 34+, Superior Progressive Genetics, BQA certified. Out of pred. Black Angus, few SimAngus cross cows by Jorgensen Black Angus bulls. 100% black hided. One or two BWF, depending on sort. \$207.50, Nov. 18-24 delivery. Ryals Cattle Co., Fort Ogden, FL, sold 108 steer calves @ 450 lbs. VAC 34+, Superior Progressive Genetics. Out of English cross & Brahman cross cows by Jorgenson Angus & Charolais bulls. \$189, Dec. 12-14 delivery. V.C.H. Ranch, Arcadia, FL, sold 100 steer calves @ 490 lbs. VAC 34+. Out of English cross & English Brahman cross cows by Charolais bulls. Possibly few Angus sired. \$184, Dec. 12-15 delivery. V.C.H. Ranch, Arcadia, FL, sold 105 heifer calves @ 470 lbs. VAC 34+. Out of English cross & English Brahman cross cows by Charolais bulls. Possibly few Angus sired. \$166, Dec. 12-15 delivery. 7G Land & Cattle LLC, DeQuincy, LA, sold 86 steer calves @ 575 lbs. VAC 24, Superior Progressive Genetics. Out of Angus cross cows by Angus bulls. 1/4 or less Brahman influence. Pred. black hided with a few red & yellow, depending on sort. \$165.50, Dec. 1-15 delivery. **Bred stock:** Kevin & Rosemary Anderson, Whitman, NE, sold 50 bred heifers @ 1,000 lbs. Angus, low percentage SimAngus & a few Hereford Angus cross heifers AI'd to Angus (ABS Hickock & Patriarch) bulls. Start calving approx. 3/20/23 for approx. 14 days. Preg checked 9/21/22. Approx. 25% purchased from Nebraska Sandhills ranch. \$1,900, Nov. 28-Dec. 7 delivery. Noble Ranch LLC, Yuma, CO, sold 53 bred heifers @ 1,100 lbs. Angus heifers out of McConnell Angus bulls. Heifers were never topped when purchased. AI'd to Basin Encore (ABS) Black Angus bull (+12 CED & -1.2 BW EPDs) on 5/22/22. Start calving approx. 2/20/23. Ultrasounded in July & again prior to delivery. \$2,000, Nov. 19-Dec. 2 delivery.

North American BULL GUIDE 2023

Small Investment BIG MARKET

WLJ's North American Bull Guide is the premier publication that puts your program in front of bull buyers around the country.

ISSUE DATE
JAN. 9, 2023

AD RESERVATION
DEADLINE
NOV. 28, 2022



The readers of *Western Livestock Journal* are the bull buyers that you want at your next production sale or sorting through your private treaty bull pen.

About WLJ bull buyers:

- 92.3% own or manage a beef cattle operation and AI breed an average of 136 head.
- They will use an average of 18.5 bulls and replace an average of 5.7 bulls.
- 8% will buy replacement heifers, and 67.6% will raise their own replacement heifers.
- 26% will both buy and replace their replacement heifers.

If you want to add value to your operation, advertise your program's genetics in *WLJ's Bull Guide*.

THE BEST LIVESTOCK MARKETING TEAM IN THE BUSINESS.
CONTACT YOUR FULL-SERVICE FIELDMAN TODAY.



Logan Ipsen
President
916-947-2392
logan.ipsen@gmail.com
TX, NM, AZ, NATIONAL



Devin Murnin
406-696-1502
devin.murnin@gmail.com
MT, WY, ID, ND



Jim Gies
970-590-0500
jgies@msn.com
CO, WY, ND, SD,
NE, OK, KS



Jared Patterson
208-312-2386
jaredpatterson77@gmail.com
CA, NV, UT, OR,
WA, ID

1-800-850-2769
www.wlj.net
advertising@wlj.net

Western Livestock Journal.
The nation's leading source for livestock news

