

### INSIDE WLJ

**WAGE FIXING** — Tyson, JBS reach settlement in wage-fixing case. Page 10

**REBATES** — Washington to pay rebates to farmers dealing with fuel surcharges. Page 15

#### A LOOK BACK IN HISTORY

"It didn't take long for the first couple of U.S. processing companies to be approved for exporting beef to Mexico, once the U.S.' neighbor to the south announced March 3 it was reopening the border, which was closed since the U.S. discovery of its first confirmed case of bovine spongiform encephalopathy (BSE) December 23. As of press time last week, there were reports some U.S. beef had entered Mexico; however, the amount of that product was not known," read the March 15, 2004, WLJ article.

#### INDEX

Opinion .....	P-2
Sale Reports .....	P-19
Markets .....	P-20
Classifieds .....	P-22
Sale Calendar .....	P-23

## USDA finalizes voluntary 'Product of USA' label rule

### — Compliance by January 2026

USDA has finalized its rulemaking process to better align the voluntary "Product of USA" label claim with consumer understanding.

The department has spent the last year developing a voluntary label claim to be used on meat, poultry and egg products that are derived from animals born, raised, slaughtered and processed in the U.S. Officials say the rule will prohibit misleading U.S. origin labeling in the market, and ensure truthful labeling information for consumers about where their food comes from.

"This final rule will ensure that when consumers see 'Product of USA' they can trust the authenticity of that label and know that every step involved, from birth to processing, was done here in America," said USDA Secretary Tom Vilsack in a statement.

In addition to the final rule, USDA will be funding \$9.5 million to 42 projects through the Local Meat Capacity grant program to help expand meat processing facilities, as well as "new actions to ensure transparency and a fair and competitive market in the U.S. seed industry."

#### Final label rule

The new labeling rule is strictly voluntary. It allows for the use of the "Product of USA" or "Made in the USA" labels on products from animals that are in the U.S. entirely from birth to processing.

The label claim will remain eligible for generic label approval, which means the Food Safety and Inspection Service does not need to pre-approve it before its use. However, establishments do need to maintain documentation on file to support the claim. If the claim is used, packaging will need to include a description of the preparation and processing steps

See LABEL RULE on page 13



Lance Cheung/USDA

USDA has finalized its rule for voluntary "Product of USA" product labeling. Pictured here, meat products at a grocery store in Fairfax, VA, in 2011.

## CO River states are at an impasse in negotiations

### — Submit separate plans

With an approaching deadline to agree on new rules for managing the Colorado River after the current rules expire in 2026, policymakers in the Upper and Lower Basin states are at an impasse and have released opposing plans.

The competing plans highlight the challenges in reaching a consensus on how to navigate the river's shrinking resources in the future. Both sides stressed the need to reduce usage due to climate change. Still, the ongoing argument persists with the Upper Basin states calling for cutbacks from the Lower Basin, and the Lower Basin asserting all states need to reduce usage.

#### Upper Basin

The Colorado River Upper Basin states of Colorado, New Mexico,

Utah and Wyoming submitted an alternative plan to the Bureau of Reclamation (BOR) with modeling assumptions and operational guidelines for the management of Lake Powell and Lake Mead beyond 2026, as mandated by the National Environmental Policy Act (NEPA) review process.

The plan addresses key objectives, including mitigating risks associated with diminished storage in Lake Powell and Lake Mead and incorporating the latest scientific findings on climate change impacts. Additionally, the plan seeks to rectify the current imbalance between water supply and demand in the basin, adjust operations based on observed conditions rather than projections, and consider hydrologic shortages in the Upper Basin.

"We can no longer accept the status quo of Colorado River opera-

tions," Becky Mitchell, Colorado's commissioner to the Upper Colorado River Commission (UCRC) said in a press release. "If we want to protect the system and ensure certainty for the 40 million people who rely on this water source, then we need to address the existing imbalance between supply and demand."

She continued, "That means using the best available science to work within reality and the actual conditions of Lake Powell and Lake Mead. We must plan for the river we have—not the river we dream for."

UCRC commissioners said the plan focuses on building storage in Lake Powell to ensure a sustainable water supply for the future. They acknowledged the uncertainties

See RIVER IMPASSE on page 16

## Cattle grazing in AZ subject of new suit

### — National monument affected

Environmental groups are after livestock grazing yet again, this time putting blame on cattle in Arizona's Agua Fria National Monument.

The Center for Biological Diversity and Maricopa Audubon Society sued the Bureau of Land Management (BLM) and U.S. Fish and Wildlife Service (USFWS) on March 12, alleging habitat destruction for two species because of cattle grazing.

"This lawsuit seeks to jolt federal agencies into finally taking action to stop illegal livestock grazing from trashing endangered species habitat in Agua Fria National Monument," said Chris Bugbee of the Center for Biological Diversity. "For four years these agencies have done almost nothing to keep cows out of these protected areas."

The groups claim the endangered Gila chub and threatened western yellow-billed cuckoo's habitats are at risk from "illegal livestock damage."

The Center for Biological Diversity said they have conducted their own field surveys dating back to 2021, documenting livestock damage.

"In the monument, and across the desert Southwest, livestock grazing harms threatened and endangered wildlife and is the primary driver of

See AZ SUIT on page 10

## Packers slow slaughter to boost margins

Packers have slowed their weekly slaughter and are trying to keep cash trade steady to boost sagging margins. As a result, boxed beef prices climbed over \$4.

"The message from the processors is to continue small slaughter numbers until they can better manage the margins—either by increasing box prices or decreasing cash prices," the Cattle Report wrote on Thursday. "Cattle owners will continue to attempt to leverage their position of declining fed supplies and convert the advantage into higher prices."

Live cattle futures were lower, with the April contract down \$1.77 to \$186.95 and the June contract down \$1.23 to \$183.37.

Cash trade through Thursday was light, totaling 10,000 head. Live steers sold between \$187-190, and dressed steers sold between \$294-301.

ShayLe Stewart, DTN livestock analyst, reported on Thursday bids were offered at \$292 in Nebraska, but feedlots were not biting. "Asking prices in the North are firm at \$300, and in the South feedlots are asking \$188," Stewart continued.

The national weekly direct beef type price distribution for the week of March 4-11 was the following on a live basis:

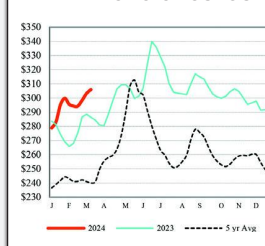
- Negotiated purchases: \$185.14.
  - Formula net purchases: \$186.33.
  - Forward contract net purchases: \$193.28.
  - Negotiated grid net purchases: \$186.45.
- On a dressed basis:
- Negotiated purchases: \$294.25.
  - Formula net purchases: \$294.06.
  - Forward contract net purchases: \$302.39.

- Negotiated grid net purchases: \$291.88.

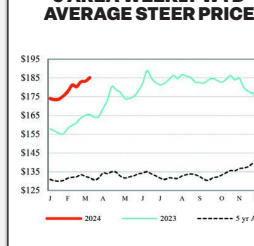
See MARKETS on page 21

PERIODICAL: Time Sensitive Priority Handling

#### WEEKLY CHOICE CUTOUT



#### 5 AREA WEEKLY WTD AVERAGE STEER PRICE



LIVE STEERS	DRESSED STEERS	CME FEEDER
\$184.85	N/A	\$248.46
WEEK ENDING: 03-14-24		

## COMMENTS

### Protein shifts

**T**yson Foods recently announced they will be closing their Perry, IA, pork plant amid a sliding downward trend in the pork marketplace nationally. Currently, this plant provides a job for roughly 15% of Perry's workforce directly, so one can imagine all the secondary businesses that will be affected by this single plant closing. While this facility processes 9,000 head a day, it accounts for less than 2% of Tyson's overall flow according to EverAg, a supply chain software and services provider. This is unfortunately the devastation that happens when one company as large as Tyson has to make difficult decisions. This is a devastating blow to a small agriculture town and the plant's suppliers.



IPSEN

According to a Business Insider article published earlier in February, pork has seen a 9% decrease in demand in the last 10 years. Additionally, the National Pork Board estimates a 2.2-pound per capita decrease in the next decade, citing lower demand in millennials and younger generations.

Couple this with a stronger supply chain that's seen a 25% increase in recent years and tough decisions are being forced on the nation's largest suppliers of pork. Unfortunately, it's the ebbs and flows of markets and a changing shift in protein preferences in the consumer. Tyson's revenue for their pork business slid from profits post pandemic to this last fiscal year by nearly \$330 million.

Tyson's competitor, Smithfield Foods, has already done the same thing in the past year with two of their pork facilities, citing weaker demand and over supply issues.

Additionally, in the last 18 months, Tyson Foods has closed or announced the closure of six poultry processing plants, mostly in the southeastern states. The company continues to monitor the supply and demand balance of the two proteins.

It's hard to grasp how the nation is bouncing back so uncontrollably since the pandemic of 2020. Such a large disruption to every supply chain imaginable, and we are now seeing the ripple effects taking place. Inflation woes in every market while changing demands and preferences at the consumer level are beyond difficult to predict and comprehend. We are seeing the decisions made in 2020-21 on production levels have their true impact on today's markets. Those decisions were made under the guise of false security on price points at the time.

Profit margins slid quickly into the red for pork and poultry and have now done the same thing with beef prices amid the cattle shortage. Culminating thoughts of over supply on pork and poultry while the opposite effect is happening on the beef side, we can only imagine the squeeze the meat giants are feeling right now. We haven't seen the last announcement from the company as they adapt to the marketplace.

On the beef side of things, nearly 40,000 less head of cattle were slaughtered in the last reported week compared to last year at this time. This trend will most likely hold true with the smaller cow herd we are operating with further liquidation still happening, although that is starting to have breath of slowing down. *WLJ* looks for ranchers to begin to hold more replacement females back this coming year, but that won't equal herd expansion in the short term. This has caused analysts like CattleFax to boast strong numbers for feeder calves this summer, touting an increase in the mid \$20s/cwt for lighter feeder cattle and \$9/cwt for fed steers.

Profit margins for packers continue to operate in the red while feeders are bouncing back and forth nearly every week. This is mostly helped by feed costs being 30-50% less than a year ago, depending on their geography. By all accounts, regions that have suffered heavy drought the last few years are seeing additional moisture and regions look to recover in 2024-25. Forecasts for a lighter snowpack in the North and West are calling for a wet late spring which should help turnout and summer capacities on permits and higher ranges. All outlooks for cattle producers in 2024 look positive.

According to the Sterling Beef Profit Tracker, beef processing capacity utilization was down 6.4% from last year at this time. Thinking about all the moderate sized facilities that have come on to the marketplace over the last 18 months, a shorter supply, and demand holding strong at the consumer level, the beef market is going to take a toll on the Big Four's budgets. Especially where it's predicted to finish cattle at a cost in the mid \$2,000s.

This is going to be something we all need to pay attention to. Shifts in all the major proteins in the coming year are going to give a much clearer picture of how the Big Four are going to maneuver through a bumpy road with potholes filled with red ink. Disdain is still the undertone from cattle producers towards the packer, but unfortunately, we need each other for survival. — **LOGAN IPSEN**



### DITTMER'S TAKE

If you breathed a sigh of relief that USDA did not vow to break up the big packers, destroy our value-added beef quality successes or open the field for trial attorneys to wage a tobacco, tire or Roundup-style jihad on the beef industry, I hope you enjoyed the brief respite. The most recent news is mixed, with some directly hobbling the beef industry.

Letitia James, the infamous New York attorney general who has been persecuting former President Donald Trump to raise millions for New York government, has announced her newest fundraising persecution target will be JBS. She apparently doesn't like the company's claims regarding net zero emissions by 2040 and quotes United Nation's "Livestock's Long Shadow" faulty data.

The Securities and Exchange Commission (SEC), which has traded its assigned job of regulating securities trading for woke policy objectives, did back off part of its three-stage climate change advocacy crusade. It retreated from Stage 3 reporting, which would have required farmers and ranchers to account for all the greenhouse gas emissions they were responsible for, and report to publicly traded companies they supply. Reportables included things like tires used, fuel consumed, miles traveled, methane from ruminating cows and heaven knows what else.

Stages 1 and 2 remain in place, meaning all other businesses in our supply chain, in fact nearly every business in the economy, will still have to spend millions to a) comply and/or b) hire lawyers or join lawsuits trying to stop yet another government attempt to run the world.

The Environmental Protection Agency has already proposed to tighten wastewater rules that would force all packers to spend millions in compliance and force smaller packers to shut down, unable to bear the cost.

It is typical of the big government/socialist efforts that one wing requires some mandates in direct cross purposes with another wing, all striving for more power and control. The same Biden administration that is granting millions of taxpayer dollars to finance smaller and regional packers, especially ones that don't exist yet, is on the other side of the fence, trying to impose wastewater regulations that would put existing smaller operations out of business.

Irony? Or just stupidity?

The same folks who decry concentration in industries, hate big business—President Joe Biden felt compelled to claim he was a "capitalist" and "not anti-corporation" in his State of the Union presidential campaign speech—fail to understand that every regulation and restriction they

place on businesses in an industry forces more concentration, higher prices for consumers and steals funds for innovation. The big businesses the regulators hate are the ones that can manage to comply while smaller ones cannot.

The latest salvo: USDA announced a final rule that would essentially force most beef sold at retail to no longer be labeled "Product of USA." Use of the label is "voluntary" but most all the beef processed—the high-quality, safely processed beef consumers depend on and pay for—could no longer bear such a label. And putting an American flag on the package without the verbiage is prohibited, too.

USDA claims they are doing this in the name of "transparency." Practically speaking, what they are really doing is kowtowing to consumer activists who want to damage or destroy American beef production and industry activists with short-sighted goals of hurting packers, damaging export markets, stopping beef imports (needed lean beef for grinding) and wreaking revenge on mainstream cattle and beef production.

We've really been down this road before. The awful mandatory county-of-origin labeling (MCOOL) experiment proved the surveys were accurate—origin was not among the top half dozen factors consumers considered in buying beef. Most consumers did not notice the label change and continued relying on the branded beef and/or retail reputation, appearance, past tasting and cooking experience and price, just like before.

And the price boosts the MCOOL proponents were claiming never happened. The big and regional packers either ignored the whole thing or concentrated Canadian- or Mexican-sourced cattle in one plant or on certain days.

The skeptics claiming beef package segregation was a packer myth have never explained how to track the nearly 600 or so pieces of meat from each carcass through a plant and have stymied all electronic tracking of cattle to enable a practical U.S. "born, raised and processed" label.

We operate in a world wherein businesses that produce things, employ people and supply consumers constantly have to sue their government—individually or as associations—to keep the government regulations from putting them out of business. — **Steve Dittmer, WLJ columnist**

*(Steve Dittmer is the author of the Agribusiness Freedom Foundation newsletter. Views in the column do not necessarily represent the views or opinions of WLJ or its editorial staff.)*



## GUEST OPINION

### WHY ARE EU FARMERS PROTESTING?

Tractors are in the streets in Paris, Rome, Brussels and many other cities and towns across Europe this winter. The continuing farmer protests in several European countries have many motivations, some common to all and some particular to specific nations.

European farmers are burdened by debt, the continuing economic impacts of the COVID-19 pandemic, lower grain prices due to disruptions from the war in Ukraine, climate-driven regulations, import competition and an agricultural support system that is not able to cope with these challenges.

It is also an election year in the European Union (EU)—for the EU Parliament in June 2024, with the formation of a new EU Commission also on the horizon. There are also upcoming national elections in several countries, including Austria, Belgium and the United Kingdom.

Specific nations have their individual reasons for protests. Farmers' top concerns vary from Germans protesting government cuts in diesel subsidies to French protests against trade deals and environmental rules that add costs and lower production.

Polish farmers have blocked border crossings to stop imports of lower-priced grain from Ukraine. Farmers in Belgium, Italy, Greece, the Czech Republic and Spain are also taking to the streets to show the public their anger about new and costly rules that are being imposed on farmers. They are fed up with mandates and regulations designed without their input.

Farmers across Europe are urging EU officials to deal with farmers' concerns over prices and bureaucratic rules

that limit their ability to produce food and prosper. In response, the EU Commission is taking action to stop a new rule, part of the EU's so-called Farm to Fork strategy to deal with climate change, which would have required farmers to cut their pesticide use in half by 2030.

A sign of what was to happen began in 2019 in the Netherlands. Farmers drove their tractors to a protest of the Dutch government's plan to sharply reduce nitrogen emissions from farms by halving the number of livestock in the country. Farmers formed a new political party that has achieved enough support to become a part of the government.

Across the pond, farmers in the U.S. are dealing with some of the same issues as their European counterparts, but in a different way. Through the Food and Agriculture Climate Alliance, farmers worked with other groups to muster support for voluntary, market-driven and incentive-based programs to include sustainable practices in their farming operations. And farmers and ranchers are continuing discussions with Congress about the farm bill, pressing for assurance that the legislation is fiscally sound and responsive to producer's needs.

One thing seems certain—old lessons have to constantly be learned by those in power: working with your nation's farmers, instead of imposing top-down regulations, remains the best way to maintain a necessary and productive agriculture. Leaders must listen to those closest to the issues. — **Dave Salmonsens, American Farm Bureau Federation senior director of government affairs**



**Letters to the editor:** Letters for publication must be no longer than 675 words, must refer to an article that has appeared within the month, and must include the writer's name, address and phone number. Addresses and phone numbers will not be published. Letters may be shortened for space requirements. Send a letter to the editor by emailing [editorial@wlj.net](mailto:editorial@wlj.net) or mailing it to Western Livestock Journal, Attn: Editorial Dept., 6021 S Syracuse Way, Ste #103, Greenwood Village, CO 80111.

The national livestock weekly • Since 1922 • Western Livestock Journal LLC • 6021 S Syracuse Way, Ste #103, Greenwood Village, CO 80111  
www.wlj.net • 303-722-7600 • Fax 303-722-0155

PRESIDENT	ADVERTISING@WLJ.NET	FIELD REPS	CIRCULATION@WLJ.NET
<b>LOGAN IPSEN</b> New Plymouth, ID 916-947-2392 <a href="mailto:logan@wlj.net">logan@wlj.net</a>	<b>KIRBY BRINCEFIELD</b> Operations Manager 720-716-3363 • <a href="mailto:kirby@wlj.net">kirby@wlj.net</a> <b>MIKE OLDORN</b> Advertising Coordinator & Graphic Design 720-370-9095 • <a href="mailto:mike@wlj.net">mike@wlj.net</a> <b>TRISTAN MARTIN</b> Advertising Coordinator & Graphic Design 720-372-1763 • <a href="mailto:tristan@wlj.net">tristan@wlj.net</a> <b>TOM WHITE</b> Real Estate Advertising Specialist 720-370-7977 • <a href="mailto:tom@wlj.net">tom@wlj.net</a>	<b>LANETTE FRYE</b> Commercial Advertising Representative Three Forks, MT 406-855-3172 • <a href="mailto:lanette@wlj.net">lanette@wlj.net</a> <b>DEVIN MURNIN</b> Director of Field Services Billings, MT 406-696-1502 • <a href="mailto:devin@wlj.net">devin@wlj.net</a> <b>JARED PATTERSON</b> Caldwell, ID • 208-312-2386 • <a href="mailto:jared@wlj.net">jared@wlj.net</a> <b>TY GROSHANS</b> Akron, CO • 970-818-6016 • <a href="mailto:ty@wlj.net">ty@wlj.net</a>	<b>HANNAH JACKSON</b> Circulation Manager & Copy Editor 720-370-8275 • <a href="mailto:hannah@wlj.net">hannah@wlj.net</a> <b>CLASSIFIED@WLJ.NET</b> <b>TOM WHITE</b> Classifieds Manager 720-370-7977 • <a href="mailto:tom@wlj.net">tom@wlj.net</a> <b>PUBLISHER EMERITUS</b> <b>PETE CROW</b> Publisher Emeritus • <a href="mailto:pete@wlj.net">pete@wlj.net</a>

WESTERN LIVESTOCK JOURNAL (ISSN 0094-6710, USPS 678660) is published weekly (52 issues annually, plus special features) by Western Livestock Journal LLC, 6021 S Syracuse Way, Ste #103, Greenwood Village, CO 80111. Website: [www.wlj.net](http://www.wlj.net). Email: [advertising@wlj.net](mailto:advertising@wlj.net) or [editorial@wlj.net](mailto:editorial@wlj.net). U.S. subscription rates: 1 year - \$55, 2 years - \$85, 3 years - \$110. Single-copy price: \$1.50. Periodicals postage paid at Denver, CO, and at additional mailing offices. POSTMASTER: Send address changes to Western Livestock Journal, P.O. Box 370930, Denver, CO 80237-0930.

# You can wear more calves per cow exposed on the range!

Utilize the most proven database in the industry for trait selection that will go directly to your bottom line and give you a marketing advantage.

**FREE DELIVERY**  
**PAP TESTED**

## Bar T Bar Ranches

# Annual Bull Sale

April 13, 2024 • 1:00 p.m. (PDT)

Southern Balancers • Balancers • Stabilizer • Angus  
Crater Ranch Headquarters • Winslow, AZ




# 185

## Bulls Sell!

Pre-Sale Social with Lee Leachman

April 12, 2024 • 5:30 p.m. (PDT)  
Meteor Crater Museum

### 110 BALANCER & STABILIZER BULLS



3184

4-Star Calving Ease • Top 1% \$Profit  
Top 1% \$Ranch • Top 1% \$Feeder



3250

Top 5% \$Profit • Top 8% \$Ranch  
Top 10% \$Feeder



3260

Top 4% \$Profit • Top 1% \$Feeder



3267

3-Star Calving Ease  
Top 4% \$Profit • Top 1% \$Feeder

### 80 NO-WORRY CALVING EASE BULLS



3057

5-Star Calving Ease • Top 5% \$Profit  
Top 6% \$Ranch • Top 7% \$Feeder



3208

4-Star Calving Ease • Top 1% \$Profit  
Top 2% \$Ranch • Top 2% \$Feeder



3322

4-Star Calving Ease • Top 1% \$Profit  
Top 7% \$Ranch • Top 1% \$Feeder



3338

3-Star Calving Ease • Top 7% \$Profit  
Top 18% \$Ranch • Top 6% \$Feeder

### 55 SOUTHERN BALANCERS BULLS



3217

4-Star Calving Ease  
Top 5% \$Profit • Top 6% \$Ranch



3303

4-Star Calving Ease  
Top 4% \$Profit • Top 12% \$Ranch



3333

5-Star Calving Ease  
Top 1% \$Profit • Top 1% \$Ranch



3335

4-Star Calving Ease  
Top 7% \$Profit • Top 7% \$Ranch

### 15 ANGUS & HIGH % ANGUS BULLS



2303

Top 14% \$Profit • Top 4% \$Feeder



2308

Top 2% \$Profit • Top 12% \$Ranch  
Top 1% \$Feeder



2316


5-Star Calving Ease • Top 7% \$Profit  
Top 2% \$Feeder



3086

3-Star Calving Ease • Top 1% \$Profit  
Top 6% \$Ranch • Top 1% \$Feeder

FINDING THE BALANCE



**BAR T BAR RANCHES**  
"A CULTURE OF STEWARDSHIP"

## BAR T BAR RANCHES

Seedstock Marketing • [info@bartbar.com](mailto:info@bartbar.com)  
Bob & Judy Prosser • (928) 380-5149  
Kristin & Devin Hovey • (970) 485-0974



Lee Leachman, Herd Consultant  
(970) 568-3983  
Jerrold Watson, Customer Service  
(303) 827-1156

# Slaughter cattle and ground beef market soars

Slaughter cow prices continue to move higher with declining cow inventories and reduced cow slaughter. Boning cow prices in Oklahoma auctions averaged \$118.54/cwt (average dressing) for the week ending March 8 (Figure 1). Slaughter cow prices for the week ranged from \$126.87/cwt for high-dressing breaking cows to \$99.13/cwt for low-dressing lean cows.

Slaughter cow prices are driven by the price of 90% lean beef trimmings (90s), which posted a price of \$317.36/cwt the first week of March. This is a record high price for 90s in data back to 1978 and undoubtedly an all-time record weekly price. The supply of non-fed beef (cows plus bulls) is down 12.7% year over year thus far in 2024, the result of a 13.1% year-to-date decrease in cow slaughter. Dairy cow slaughter is down 15% and beef cow slaughter is down 11.4% year over year, while bull slaughter so far in 2024 is down 9.4% from one year ago.

Lean beef trimmings are a key component of ground beef production. A wide variety of lean and fatty trim products are used to provide ground beef supplies for food service and retail grocery markets. A standard reference for

ground beef values is the ratio of five pounds of 90s to 1 lb. of 50s (50% lean trimmings), which is equivalent to 83.3% lean ground beef.

The increased price of 90s has pushed this reference price of wholesale ground beef to \$281.28/cwt in the first week of March. This reference price of ground beef was exceeded only one week during the pandemic disruptions in 2020 and is otherwise at an all-time high.

The major portion of U.S. beef imports is lean beef used for the ground beef market. As domestic lean beef supplies decrease and prices increase, markets respond with increased beef imports to moderate impacts domestically. Accordingly, beef imports in 2023 increased 9.9% year over year.

In the latest data for January, beef imports were up 38.1% year over year. Beef imports are typically front-loaded in the new year as countries, especially Brazil, scramble to fill the unassigned "other country" import quota. Monthly imports will moderate later in the year and total imports for 2024 are projected to increase 12-13% year over year.

Slaughter cow and wholesale ground beef prices are expected to move

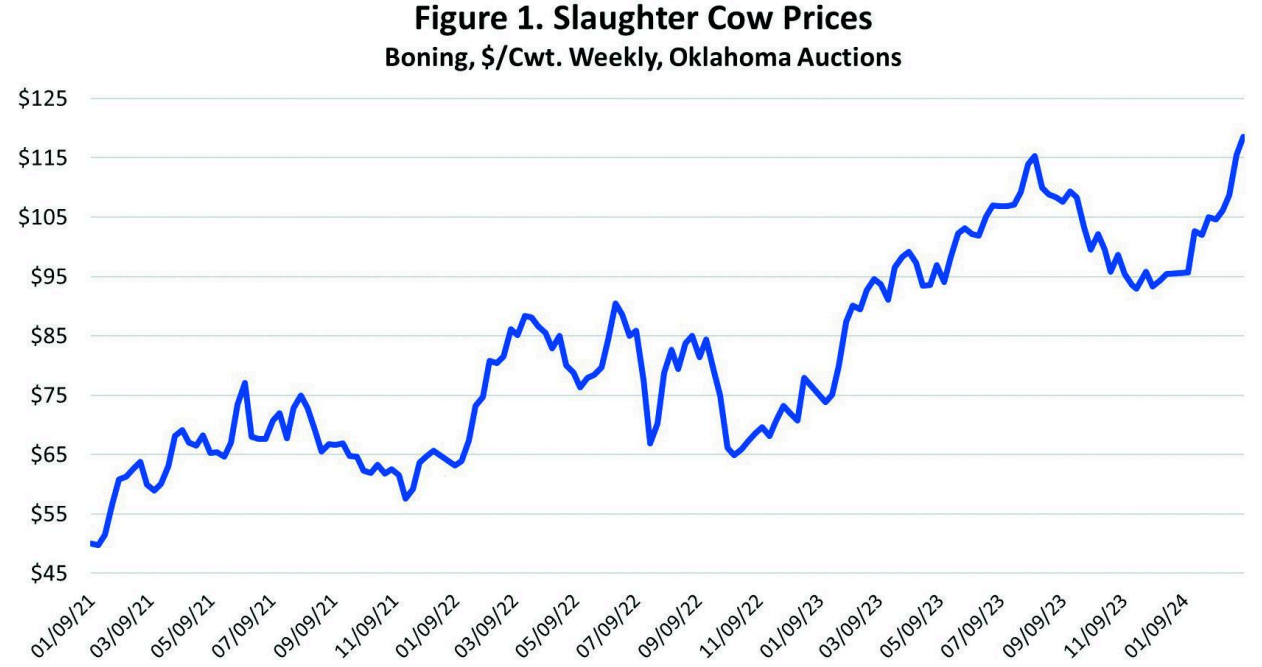


Figure 1. Slaughter Cow Prices  
Boning, \$/Cwt. Weekly, Oklahoma Auctions

higher in the coming months. Net cow culling (beef and dairy) decreased to 17.2% in 2023 from the cyclical peak of 17.8% in 2022. However, during the last herd expansion, net cow culling decreased to a low of 13.3% in 2015.

Without herd rebuilding, cow slaughter will decrease in 2024 simply because cow inventories are smaller; if herd rebuilding begins in earnest in 2024, cow slaughter will decrease more sharply. — **Derrell S. Peel, Oklahoma State University Extension livestock marketing specialist**

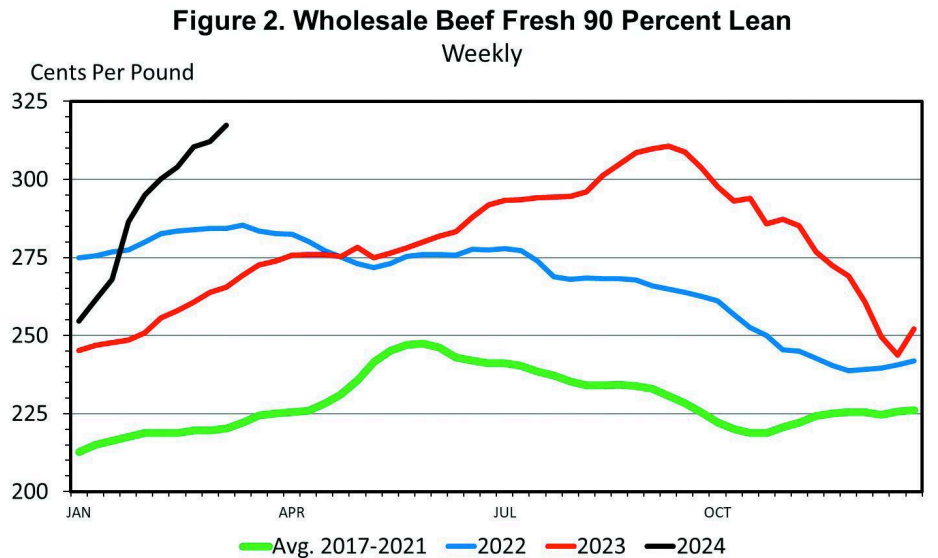


Figure 2. Wholesale Beef Fresh 90 Percent Lean Weekly

## QUEEN ANNCATTLE

APRIL 6TH, 2024  
11 AM @ LOMA LIVESTOCK

### 100 HEAD PAP TESTED ANGUS BULLS

*Simmi X Sire*

*Angus Sires*



**KBHR HONOR H060**  
ASA 3789447

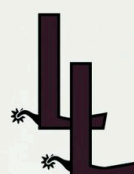


**GAR HOME FREE**  
AAA +\*19862808[AMF-CAF-XF]



**GAR FAIL SAFE**  
AAA +\*18181757[AMF-CAF-XF]

GEORGE RAFTOPOULOS: 970.326.8621  
LOMA LIVESTOCK: 970.858.9988



1369 12 1/2 Rd  
Loma, Co 81524

## Beef export value above year ago

While January beef exports were slightly below last year's volume, export value trended significantly higher, according to January data released by USDA and compiled by the U.S. Meat Export Federation (USMEF). Lamb exports were also strong in January, posting the highest value in more than four years.

January beef exports totaled 99,764 metric tons (mt), down 1% from a year ago. But export value climbed 9% to \$763.8 million, as value trended higher year-over-year to South Korea, Japan, Mexico, Canada, Central America, the Caribbean and Hong Kong. Beef variety meat exports increased 12% from a year ago to 23,138 mt, while value climbed 16% to \$89 million, led by growth in Japan, Egypt, Mexico, Korea, Peru and China/Hong Kong.

"While USMEF expects 2024 to be another challenging year in terms of beef supply availability, the upward trend in export value is a positive sign," said USMEF President and CEO Dan Halstrom. "The inventory has been cleared

and customers in Asia are reloading on U.S. beef. There is also more optimism in Asia's foodservice sector, especially in Korea. Combined with the recent strength we've seen in the Western Hemisphere, this bodes well for beef demand in the coming year. January was also an excellent month for beef variety meat exports, which are especially important for maximizing the value of every animal."

### Lamb exports largest in 10 months

January exports of U.S. lamb totaled 303 mt, up 28% from a year ago and the largest since March. Export value increased 53% to \$1.7 million, the highest monthly value since December 2019. Export growth was led by the Caribbean and Canada, while exports to Mexico also increased year-over-year in value.

A detailed summary of the January export results for U.S. beef, pork and lamb, including market-specific highlights, is available from the USMEF website, usmef.org. — USMEF

## Be in the know about postpartum interval

Postpartum interval (PPI) is the time between calving and rebreeding and plays a significant role in herd reproductive efficiency. A cow's reproductive success is determined by her ability to produce a live calf, resume estrous and rebreed within a 365-day window. Minimizing PPI can increase the reproductive success of any cow herd. The following are factors and management strategies that can influence PPI.

**Calf presence.** The suckling activity of a calf can inhibit the release of hormones needed for a cow to resume estrous post-calving. Short-term calf removal 48-72 hours before breeding has been shown to hasten the resumption of estrous and increased pregnancy rates. Removing calves may not be feasible for some operations, in addition to potential influence on overall calf performance.

**Body condition score (BCS).** Nutrition plays a critical role in PPI. The postpartum interval will increase when a cow's nutritional requirements are unmet. Cows with a low BCS will have longer PPI as they have fewer body stores. A cow will prioritize nutrients for providing for the calf on the ground before she allocates those resources for the resumption of estrous. Maintaining cows at a BCS between 5 and 6 through calving to

rebreeding can minimize PPI and increase breeding success.

**Age.** Heifers have longer PPI than older cows. First-calf heifers are still growing when they calve and will prioritize growth over reproduction, resulting in a longer PPI. Feeding first-calf heifers separately from the mature cows can help to minimize anestrus. Breeding heifers two to three weeks before the rest of the herd can provide the heifer a little more time to recover from calving and resume estrous.

**Dystocia.** Dystocia can lead to increased PPI. Minimizing dystocia through the use of calving-ease bulls, proper heifer development and calving assistance when needed can all help reduce dystocia and PPI.

**Bull stimulation.** The presence of a bull has been shown to decrease PPI. Cows exposed to bulls 40 days after calving have demonstrated the best results. Fence line exposure is as effective as having bulls mixed in with the cow herd.

**Estrous synchronization.** The use of progestin estrous synchronization protocols will initiate estrous cycles, and timed AI protocols have been shown to increase the proportion of anestrous cows to cycle and become pregnant. — **Randie Culbertson, Iowa State University Extension cow-calf specialist**



## APRIL 4<sup>TH</sup>, 2024 • 1:00 P.M. 48th Annual Production Sale at the ranch

**Selling 210 Bulls & 20 Top End Yearling Heifers**

All bulls have genomically enhanced EPDs.

### A-A-R Justified L034



BW +0.3  
WW +76  
Milk +28  
YW +130

Justified x Knudson  
Top weaning ratio of 122.

### A-A-R Justified 3408



BW +1.3  
WW +79  
Milk +28  
YW +133

Justified x Dash  
Powerful Justified son with a 124 nursing ratio.

### A-A-R Agenda L174



BW +1.2  
WW +81  
Milk +36  
YW +134

Agenda x Justified  
High SM and performance.

### A-A-R Stellar 3514



BW +2.0  
WW +91  
Milk +19  
YW +158

Stellar x Dash  
Big performance backed with great cow production.

### A-A-R Tahoe L114



BW +1.8  
WW +85  
Milk +30  
YW +143

Tahoe x Matrix  
Tahoe out of the great donor Blackbird 9044.

### A-A-R Knockout 3066



BW +0.8  
WW +72  
Milk +36  
YW +132

Knockout x Breakthrough  
Pathfinder dam and Grandam

### A-A-R Scale Crusher L100



BW +1.5  
WW +73  
Milk +28  
YW +130

Scale Crusher x Matrix  
Scale Crusher out of the great donor Blackbird 9044.

### A-A-R Load Up 3551



BW +0.6  
WW +74  
Milk +34  
YW +135

Load Up x High Five  
Great feet and a phenotypic standout.

### SIRES INCLUDED

Sitz Stellar 726D  
Tehama Tahoe B767  
KG Justified 3023  
Millars Duke 129  
A A R Knockout 8732  
GDAR Load Up 7104  
AAR Justified 8293  
Pine Coulee Hannibal H316  
Woodhill Agenda G151-J043  
AAR Rainier



**POWER OF PREDICTABILITY**  
What does 68 years of breeding with the same goal in mind get you?

A consistent, predictable product that has stood the test of time.

577 Arntzen Lane • Hilger, MT 59451  
arntzen@mtintouch.net • www.arntzenangus.com

Brad Arntzen: 406.350.4000 • Kevin Arntzen: 406.350.1612 • Derik Arntzen: 406.350.1728

# Thawing method does not seem to affect beef quality

Thawing does not seem to have an impact on the quality of beef by the time it hits the consumer's table, according to a study by a Kansas State (K-State) University graduate student.

Meat science student Lindsey Decker recently reported her results of tests on the palatability of strip loin steaks during K-State's Cattlemen's Day.

"With the rise in direct-to-consumer beef marketing, and consumers more frequently freezing beef due to supply chain disruptions, it was our goal to determine whether the method of thawing beef steaks effected sensory characteristics and instrumental quality measures," Decker said.

Decker said the USDA lists many ways to thaw frozen beef, but little information is

available on how thawing impacts beef quality and consumer's eating experience. Beef is known as a premium protein product and consumers expect a high-quality eating experience each time they eat it, she said.

In her study, Decker tested multiple USDA thaw methods, including thawing in the fridge, microwave and cold water; and cooking directly from the frozen state. She also tested two methods commonly utilized by consumers: thawing in hot water and thawing on the counter. Decker worked with trained and consumer sensory panelists.

"Our trained panelists were trained over several days to determine specific quality characteristics, such as beef flavor attributes, con-

nective tissue level, or juiciness, while consumers were pulled from the Manhattan area and had no training," Decker said. "The goal of running all of these tests was to find any differences caused by the various thawing methods; whether they were detectable by consumers; and provide further context to those results through the instrumental measures."

Decker used instrumental quality measures such as Warner-Bratzler Shear Force as an indicator of tenderness, pressed juice percentage as an indicator of juiciness and performed laboratory assays such as TBARs as an indicator of lipid oxidation.

"As a whole, the thawing method does not have an impact on the palatability of strip loins steaks," Decker

concluded, noting that consumers detected no significant differences among all six thawing methods, and trained panelists found few differences across all six thawing methods.

"Consumers should be sure to consider food safety and choose whichever method best suits their needs," Decker said. "Research such as this allows consumers to understand, and best manage beef at home so they continue to have excellent eating experiences."

Decker's full report, and other research reports presented during this year's Cattlemen's Day, is available online from K-State's Department of Animal Sciences and Industry, [tinyurl.com/4jfk9pww](http://tinyurl.com/4jfk9pww). — **K-State Research and Extension**

## LEGAL LEDGER

### Comments sought on UT monument plan

The Bureau of Land Management is seeking comments on a draft plan to guide management of the Bears Ears National Monument. The proposed plan includes five alternatives that were determined in collaboration with the Bears Ears Commission, a group comprising several Tribes. "While the draft management plan offers five different alternatives, public feedback will help us to refine the final plan," said Acting Manti-LaSal Forest Supervisor Barbara Van Alstine. "It's through these public comments we are able to find the best course forward." The preferred alternative allows the public use of the monument, while protecting monument resources. A total of 88% of the monument would be made available for grazing (nearly 1.2 million acres) and the review and processing of grazing permits would be prioritized. Leases that are voluntarily relinquished would be retired from future grazing. The number of livestock able to graze within the monument is the same in the preferred alternative and two of the three other action alternatives. To submit input and view the alternatives in their entirety, visit [tinyurl.com/3hdfch9k](http://tinyurl.com/3hdfch9k). Comments may also be mailed to ATTN: Monument Planning, BLM Monticello Field Office, 365 North Main, Monticello, UT 84535. Comments are due by June 11.

### Greens seek CA owl protections

A group of environmental groups recently petitioned the California Fish and Game Commission to protect five populations of the western burrowing owl under the state's Endangered Species Act. The petition requests endangered status for the species in southwestern California, central-western California and the San Francisco Bay Area, and threatened status in the Central Valley and southern desert range. "These fascinating ground-dwelling owls need relief from their homes being bulldozed for irresponsible development," said Jeff Miller with the Center for Biological Diversity. The group contends the owls have suffered habitat loss from exurban sprawl, converting grasslands to ag lands and large-scale wind and solar energy development. Petitioners include the Center for Biological Diversity, Defenders of Wildlife, Burrowing Owl Preservation Society, Santa Clara Valley Audubon Society, Urban Bird Foundation, Central Valley Bird Club and San Bernardino Valley Audubon Society.

### Extra funding available for TX fire relief

USDA is opening a special disaster sign-up for \$6 million in extra funding through the Environmental Quality Incentives Program for Texas producers who have been impacted by wildfires. Applications must be submitted to the Natural Resources Conservation Service (NRCS) by April 8 to be considered for the funding. "Loss of vegetation not only affects forages for livestock and wildlife habitat, but it can lead to increased soil loss due to erosion from wind and water," said Kristy Oates, NRCS state conservationist in Texas. We know many of our Texas producers were hit hard by this disaster and we are here to help." Assistance includes practices aimed at replacing damaged infrastructure and management and recovery of affected lands. For more information, producers should contact their local USDA Service Center or visit [nrcs.usda.gov](http://nrcs.usda.gov).

### Congress reintroduces water rights bill

Members of Congress have reintroduced legislation that would protect private water rights. Republican Reps. Celeste Maloy (UT-02), Ron Estes (KS-04), Doug Lamborn (CO-05), Russ Fulcher (ID-01) and Andy Biggs (AZ-05) reintroduced the Water Rights Protection Act to prevent the federal government from seizing privately owned waters. Sens. John Barrasso (R-WY), Jim Risch (R-ID) and Mike Crapo (R-ID) introduced companion legislation in the Senate. "Unfortunately, federal agencies have a long history of undermining our water laws by requiring co-ownership of water rights as a condition for permit agreements on federal lands," Maloy said in a statement. The legislation would prevent the Interior and Agriculture departments from mandating water users transfer water rights to the U.S. or purchase water rights in the name of the U.S. as a condition of any permit, lease or other use agreement. The bill would also prevent unlawful seizures of groundwater and recognize state water law and require coordination with states.

### Corporate Transparency Act blocked

A federal judge has blocked the Corporate Transparency Act (CTA), ruling the act is unconstitutional. The CTA was enacted as part of the Anti-Money Laundering Act of 2020. "The Government says that the CTA is within Congress' broad powers to regulate commerce, oversee foreign affairs and national security, and impose taxes and related regulations," Judge Liles C. Burke wrote in the March 1 ruling, according to a Reuters report. "Because the CTA exceeds the Constitution's limits on the legislative branch and lacks a sufficient nexus to any enumerated power to be a necessary or proper means of achieving Congress policy goals." The ruling came as the result of a legal challenge by the National Small Business Association against the secretary of the U.S. Treasury Department.

## Really Good at the Traits Most Important to Ranchers' Bottom Lines



#4184306  
Gaucho



#4298395  
Life is Good



#3744665  
Wrangler

### Huge Selection of Sons of Outcross, High Profit Sires!

#### 5L Gaucho 1017-46G:

82 WW (5%), .95 MARB (1%), 2.88 Fertility (.2%), \$118 \$Ranch (1.3%)

#### 5L Wrangler 1974-166E:

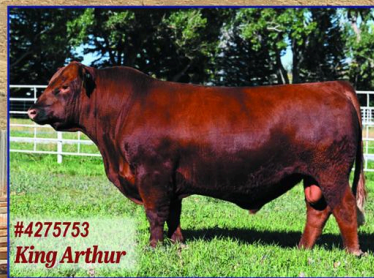
17 CED to 112 YW spread, -.20 F:G (2%), \$86 \$Ranch (5%)

#### 5L Life Is Good 1974-166E:

17 CED to 114 YW spread, .89 MARB (3%), \$20,910 \$Profit (3%)

#### LSF SRR King Arthur 0136H:

16 CED to 150 YW spread, -.20 F:G (2%), \$18,647 \$Profit (4%)



#4275753  
King Arthur

## 2024 Profit Seeker Bull Sale

Friday, April 12, 2024 • at the ranch, Sheridan, MT

300 Red & Black Angus, SimAngus and Char x Red Angus Bulls

All Sale Bulls Feed Efficiency Tested | WideBody Scored | PAP Tested

Volume Discounts | 1<sup>st</sup> Season Bull Warranty | Free Bull Delivery (min. purchase)



The Larry Mehlhoff Family • Sheridan, Montana

855-5L-Bulls • (406) 596-1204

5lbranch@3rivers.net • 5LBulls.com

RED ANGUS • BLACK ANGUS • SIMANGUS

# Redd Ranches ANNUAL BULL SALE

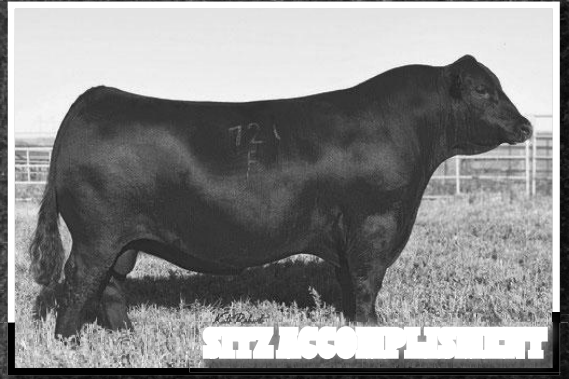
**APRIL 13<sup>TH</sup> 2024 • PARADOX, COLORADO**

*THE BULLS IN THIS SALE ARE THE RESULT OF OVER A HUNDRED YEARS OF CONTINUAL TESTING AND IMPROVEMENT.*

- *THEIR MOTHERS HAVE NEVER MISSED. • THEIR SIRES ARE THE BEST IN THE WORLD.*
- *THERE ARE OVER 70 YEARS OF AI (ARTIFICIAL INSEMINATION), GENERATIONS UPON GENERATIONS OF BREEDING THE BEST TO THE BEST TO PRODUCE BETTER CATTLE.*

DNA PROFILED • PAP SCORED • FREE DELIVERY

SITE UNSEEN BUYING GUARANTEE • LIVE INTERNET BIDDING



*Who's ready to see our 2024 offering?*  
**MAKE SURE TO REQUEST A CATALOG  
AT REDDRANCHES.COM!**

**CONTACT US AT 1-800-442-8557 OR REDDRANCHES@GMAIL.COM**



# THE VIEWPOINT

with Drew Perez

This exclusive column found only in WLJ features unique perspectives from some of the nation's top producers, marketers, animal health experts, economists and more.



Courtesy photo

Drew, Lauren, Mila and Myles Perez.

In late February, destruction hit the Texas Panhandle in the form of a historic wildfire. The fire rapidly spread across more than 1 million acres, establishing it as the largest wildfire in Texas' history.

The Smokehouse Creek Fire began on Feb. 26 just

outside of Stinnett, TX, and was among several wind-driven fires with undetermined official causes. Warm temperatures and windy conditions in Texas facilitated the fires' spread, and within 24 hours, they had engulfed over 500,000 acres of land.

As of March 12, the fire was reported to be 90% contained, according to InciWeb, an emergency information system provided by the U.S. Forest Service.

### Running P Cattle

Drew Perez is one of the many ranchers who endured the devastation of the Smokehouse Creek Fire.

Around five years ago, Drew and his wife, Lauren, branched out from the family operation to establish their own enterprise from the ground up outside Canyon, TX. Drew grew up on a commercial and purebred Hereford operation while Lauren was raised on a diversified farm. A common passion for livestock judging united the pair in college. Now, Drew and Lau-

ren have a daughter, Mila, and a son, Myles, and operate Running P Cattle Co.

Drew and Lauren started their ranch with a small herd of 10 head and expanded Running P to about 10 times its original size before the fire struck.

"This calf crop was the year we were excited for. We felt it was finally going to be the year the world could see the genetics that we could put together. We had high hopes that in 2025 we could highlight these calves in an inaugural live bull sale," Drew told WLJ. "We've worked so hard to get there, and this year was going to be the year that we actually had some numbers and some volume to take that next step—to take this from being a sideline deal to more of a full purebred operation."

The ranch had reached a stage where it felt nationally recognized, Drew continued. Running P was coming off victories earlier this year in Oklahoma City and Fort Worth, where they won the Supreme Top 5 and Champion Hereford Bull at Cattlemen's Congress, and

the Reserve Champion Hereford Bull at the Fort Worth Stock Show. Drew and Lauren had put in 50 embryos last year and many of the ranch's cows were AI'd to the champion bull, set to calve on the day the fire hit.

"We had newborn embryo calves that were born on top of ash," Drew said. "It was mind blowing to see some of those calves. I don't know how they made it."

While not all the newborn calves survived, Drew said two were miraculously untouched by the fire. One calf was found in a 2-foot square of green grass, surrounded by miles of burnt pasture.

"We are trying to look at as many positives as we can and focus our future around the few that did survive," Drew said, "and we did have some cattle that made it."

### Fire strikes

The day before the fire struck where the ranch keeps cattle near Canadian, TX, the fire was still about an hour-and-a-half drive away. Drew said they knew the fire was close but at that point, didn't think they were at risk of being in the fire's path. The following morning, the wind was roaring and that's when Drew's concern grew. They headed north to Canadian, about an hour-and-a-half drive from Canyon, to assess the situation and were confronted with the magnitude of the fire.

After stopping to talk with a firefighter on scene in Canadian, Drew learned the wind was set to change direction several hours earlier than anticipated, and within 30 minutes there was going to be "a fire 80 miles wide coming right at you."

"And he was right," Drew said. "The wind did switch early."

At that moment in time, a feeling of helplessness took over, Drew said. It was too late to do much, but he headed out into the pastures and tried to find the best area for cattle to hunker down. He called cows onto natural gas station leach pads in one pasture and left cows in another pasture bedded down in a big dirt pond.

He considered cutting fences to let cattle out, but ultimately decided against it.

"What do you do if one gets on the highway and a family of four is trying to beat that fire out of there, and they run into that cow on the road?" he asked. "That kind of stuff wasn't worth it. And there wasn't anywhere for them to go, either."

The following morning, they went back to check pastures. The cows in the pasture with the pond, the recips and Angus cows, fared the best, while the registered Herefords in another pasture were lost to the fire, and Drew estimates nearly half of the ranch's herd was killed in total.

"It's sickening to drive through," Drew said. "We had to put several of them down that were down and burnt. It was the hardest thing I have had to do in my life. Many of these were the foundation females of our operation that got us to where we were."

When they were finally able to go back into Canadian and haul cattle out to Canyon, there was another 10 head that had to be put down due to severe burns and injury. The surviving cattle are being nursed back to health, being ran through the chute every day to doctor burnt eyes, feet and udders.

"We are trying to hold together what we can," Drew said.

The entire county is scorched, with not a single blade of grass in sight, he said. Ranchers were told at a Farm Service Agency meeting shortly after the fire that Hemphill County was 87% burnt land. Adjacent counties fared the same. Early reports estimate breeding females lost total over 15,000 head.

"We're fortunate, really, if you look back on it," Drew said. "A lot of people lost 400, 500 head in the fire."

### Resilience and community

Throughout the fire and the aftereffects, Drew said the community support has been tremendous. "You go through something like that, it's very humbling to see just how many people care and how many true friends you have," he said. "We've been blown away by the support, the phone calls and texts, and people dropping whatever they have to come and help."

People have driven eight, 10 hours to deliver hay and feed, and some just showed up to be there for them, Drew said.

"It's truly amazing to see how this industry rallies and supports and cares for peers," he said. "It lets you know you're in the right spot."

For those wanting to donate time or resources to ranchers affected by the Texas wildfires, there are ongoing efforts collecting hay and feed donations, along with monetary donations. For general information about donations or relief efforts, those interested may contact Texas A&M AgriLife Extension at 806-354-5800. The Texas Cattle Feeders Association also has donation resources available at its website, tcf.org. Several funds have been set up for donations.

Scorched land will need to rest at least through the summer, probably closer to the end of fall, Drew said. While many ranchers have most needs met sufficiently right now, those holding onto their cows are going to face a long-term battle of feeding hay until the land heals.

Despite the setbacks and the long path to recovery, he speaks of resilience and optimism. "Tough times present themselves, but tough people come out of it and come back stronger," Drew said. "As long as you have your health and people are still alive, then we can rebuild cow herds and the grass will grow back in. We can rebuild fences. I think we were just very fortunate that a fire of that magnitude didn't take more lives or more people's homes." — Anna Miller, WLJ managing editor

## Jocko Valley Cattle

Producing Your Future Stars

# Bull & Female Sale

1:00 PM, Thursday, APRIL 11, 2024 Missoula, MT

Five Valley Livestock Auction

**SELLING**

- 65 Angus Yearling bulls
- 10 Registered Angus Yearling Heifers
- 10 Commercial Angus Heifers

---

**SELLING SONS OF**  
Vermillion Growth Fund  
Brumfield Trail Boss  
Roseda Powerball

---

**MARVIN REHBEIN,**  
OWNER  
323526 McLeod Road  
Arlee, MT 59821  
Home 406-726-3839  
Cell 406-546-4687  
jockovalleycattle@gmail.com  
EPDs as of 03/12/24

**JVC MAN IN BLACK L26 • AAA 20555806**

CE	BW	WW	YW	MILK	MARB	RE	SM	SW	SB	SC
+11	+8	+86	+147	+24	+1.33	+87	+75	+74	+197	+331

\*LAR Man In Black x +\*SC Ashland 41F

**TRAIL BOSS L56 • AAA 20822387**

CE	BW	WW	YW	MILK	MARB	RE	SM	SW	SB	SC
+10	+1.8	+95	+164	+29	+1.37	+77	+64	+87	+205	+330

+\*Brumfield Trail Boss 057 x +\*G A F Isabel 080-1457

**VERMILION SPUR 313 • AAA 20719408**

CE	BW	WW	YW	MILK	MARB	RE	SM	SW	SB	SC
+10	-4	+58	+102	+22	+72	+51	+63	+52	+135	+238

Vermillion Spur E870 x JVC Karama 9060

**JVC GROWTH FUND 367 • AAA 20680521**

CE	BW	WW	YW	MILK	MARB	RE	SM	SW	SB	SC
+5	+1.6	+67	+113	+26	+40	+51	+90	+60	+126	+253

Vermillion Growth Fund J207 x JVC Precision 1342

**JVC GROWTH FUND 399 • AAA 20793284**

CE	BW	WW	YW	MILK	MARB	RE	SM	SW	SB	SC
+9	+1.9	+70	+124	+36	+73	+50	+66	+68	+137	+244

\*Deppe GAF Growth Fund 0125 x +\*JVC Erroline C22

**JVC SPUR L68 • AAA 20629808**

CE	BW	WW	YW	MILK	MARB	RE	SM	SW	SB	SC
+1.5	+1.9	+78	+137	+23	+44	+68	+66	+68	+178	+297

Vermillion Spur E870 x +\*Baldrige Clover G1002

# Comparing bulls to buy for your operation

An Oklahoma producer recently asked about which bulls to purchase for their commercial cow-calf operation. The operation needs two more Angus bulls this spring and has narrowed the selection list down to five bulls which were all available to purchase private treaty (see Figure 1).

The bulls are all spring yearlings and will be approximately 15 months of age at turnout and accordingly should be expected to cover 15 cows this year. All the bulls have passed a breeding soundness exam and sell with a registration paper and a breeding soundness warranty. So, the buying decision boils down to identifying the right bulls for this operation. The right bulls to buy are the ones most capable of adding value to the calf crop sired relative to their purchase price. In order to do so the bulls need to:

- Complement the females to which they will be mated.
- Offer genetic values of economic relevance to the marketing endpoint of the calves they will sire.

This operation intends to use the bulls as terminal sires on spring-calving cows, 4-6 years of age. After weaning the calves will run on cool-season grass until marketed as yearlings. In this operation the trait of primary economic importance is Yearling Weight (YW).

In order to calculate the profit potential of each bull, we

will assume each bull will sire 135 calves over their lifetime of service, each will have the same salvage value and the value of a pound of yearling weight sired will be \$2.

Using the least expensive bull as our starting point:

• **Bull 5** serves as the baseline for least YW sired with a 108 YW EPD at expense of \$5,500.

• **Bull 1** is expected to sire 12 pounds more YW per calf, this multiplied by 135 calves results in an additional 1,620 lbs. A total of 1,620 lbs. of YW at a value of \$2 equals \$3,240. The purchase price of Bull 1 is \$4,500 more than Bull 5.

\$3240 - \$4,500 = \$ -1,260.

So, Bull 1 is a worse choice than Bull 5 by \$1,260.

• **Bull 2** is expected to sire 33 lbs. more YW per calf, this multiplied by 135 calves results in an additional 4,455 lbs. A total of 4,455 lbs. of YW at a value of \$2 equals \$8,910. The purchase price of Bull 2 is \$2,500 more than Bull 5.

\$8,910 - \$2,500 = \$6,410.

So, Bull 2 is a superior choice than Bull 5 by \$6,410.

• **Bull 3** is expected to sire 27 lbs. more YW per calf, this multiplied by 135 calves results in an additional 3,645 lbs. A total of 3,645 lbs. of YW at a value of \$2 equals \$7,290. The purchase price of Bull 3 is \$7,000 more than Bull 5.

\$7,290 - \$7,000 = \$290.

So, Bull 3 generates \$290 more relative to his purchase

price than Bull 5.

• **Bull 4** is expected to sire 49 lbs. more YW per calf, this multiplied by 135 calves results in an additional 6,615 lbs. A total of 6,615 lbs. of YW at a value of \$2 equals \$13,230. The purchase price of Bull 4 is \$2,000

more than Bull 5.

\$13,230 - \$2,000 = \$11,230.

So, Bull 4 is a vastly superior choice than Bull 5 by \$11,230.

Another way of looking at the buying decision is looking at the cost over their lifetime of service.

• Bull 5 will sire 135 calves at a cost of \$5,500.

• Bull 4 will sire 135 calves while paying this cow-calf operation \$5,730 for the opportunity.

• Bull 3 will sire 135 calves at a cost of \$5,210

• Bull 2 will sire 135 calves while paying this operation \$910 for the opportunity.

• Bull 1 will sire 135 calves at a cost of \$6,760. — **Mark Z. Johnson, Oklahoma State University Extension beef cattle breeding specialist**

Figure 1.

ID	CED	BW	WW	YW	CEM	HP	MW	Marb	\$B	Price
1	12	0.2	70	120	9	13	76	0.35	154	\$10,000
2	4	2.9	82	141	12	6	96	0.79	180	\$8,000
3	15	0.1	78	135	14	17	86	1.80	215	\$12,500
4	5	3.5	91	157	8	5	99	0.71	185	\$7,500
5	11	0.7	63	108	8	10	65	1.90	189	\$5,500

## Understanding mycoplasma pneumonia

Anyone who has ever had a respiratory infection knows how hard it can be to clear the body and how miserable it can make a person feel.

In much the same way, beef cattle can also experience respiratory disease that may start as a virus and turn into bacterial pneumonia, said the experts at Kansas State (K-State) University's Beef Cattle Institute on a recent "Cattle Chat" podcast. The focus of this discussion was on mycoplasma pneumonia, which may require a different treatment protocol than other forms of respiratory disease, said the K-State veterinarians.

"Mycoplasma pneumonia is atypical because it is a smaller bacterium that doesn't have a cell wall and it is more contagious than some of the other respiratory illnesses," said K-State veterinarian Brad White.

K-State veterinarian Brian Lubbers added: "Because it is an atypical bacterium, some of the antibiotics that we would use to treat bovine respiratory disease just simply won't work against mycoplasma."

The veterinarians said that this type of pneumonia has a longer disease onset than other types of respiratory ill-

nesses.

"Mycoplasma pneumonia often develops in chronically ill animals that have had a severe disease challenge and it may take 30-40 days to appear in the herd," White said.

Lubbers said mycoplasma pneumonia can lead to other syndromes in the animal's body, such as a joint infection or an ear infection.

"In a lot of cases the calf starts with a respiratory infection and then weeks or months later they have swollen knee joints or even a head tilt, which are signs that they may be experiencing mycoplasma infections," Lubbers

says.

If producers suspect mycoplasma infections in the herd, White and Lubbers said that they should reach out to the local veterinarian for guidance.

"The diagnostic test for this bacterium is different and it doesn't always show on a routine bacterial culture so it is important to work with the veterinarian to get the right diagnosis and treatment protocol," Lubbers said.

To hear the full discussion, listen to the Cattle Chat podcast on your preferred streaming platform. — **K-State Research and Extension**

CALVING EASE • HIGH-ALTITUDE • PAP TESTED

◇ DIAMOND PEAK  
CATTLE

*Diamonds* IN THE **ROUGH**  
BULL SALES

ANGUS & SIMANGUS BULLS

LA JUNTA, COLORADO  
Friday, February 23, 2024

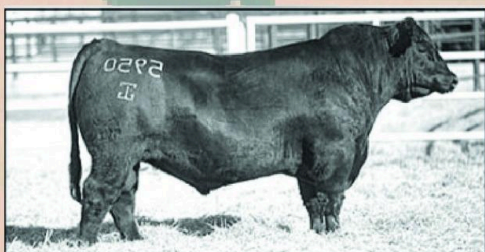
45 TWO-YEAR-OLD BULLS  
1 PM WINTER LIVESTOCK

RIVERTON, WYOMING  
Saturday, March 16, 2024

75 TWO-YEAR-OLD  
+ 45 YEARLING BULLS  
1 PM RIVERTON  
LIVESTOCK AUCTION

LOMA, COLORADO  
Saturday, March 30, 2024

200 YEARLING BULLS  
1 PM LOMA LIVESTOCK  
970-858-9988



G A R Home Free AAA# 19862808  
CED: +21; BW -4.1; PAP -1.22; Marb +1.66; REA +1.34



Crouch Congress AAA#20163340  
CED +9; BW +0.9; PAP -3.56; Marb +1.58; REA +1.10



WATCH, BID & BUY  
ONLINE AT CATTLEUSA.COM

JOHN: (970) 326-8620  
ANGELO: (970) 756-8600

351 SCHOOL STREET #1  
CRAIG, COLORADO

DIAMONDPEAKCATTLE.COM

# Tyson, JBS settle on wage-fixing case

JBS USA Food Company and Tyson Foods reached a combined \$127.3 million set-

tlement with a group of current and former employees who alleged in a 2022 lawsuit

the companies conspired to suppress wages, according to a motion filed in a federal

court.

In November 2022, a group of employees filed a class-action lawsuit in the U.S. District Court for the District of Colorado. That lawsuit alleges a group of food companies conspired to keep wages low, damaging the employees' future earnings potential.

In August 2023, the plaintiffs announced a \$10 million settlement with Seaboard Foods and an agreement with Triumph Foods to cooperate in the ongoing case against the other companies. In addition, the plaintiffs agreed to a \$1.3 million settlement with Perdue Farms Inc.

According to the latest settlement announced in federal court at the end of last week, Tyson agreed to pay \$72.3 million and JBS \$55 million—bringing the grand total to about \$138.5 million.

"The sizable financial recovery alone would render the settlement agreements adequate but the settlement agreements also contain meaningful cooperation terms that will help plaintiffs to prosecute their antitrust claims against the remaining defendants," according to a motion for preliminary approval of the agreement filed in court.

Settlements have not been reached with the remaining defendants in the case, includ-

ing Cargill Inc., Cargill Meat Solutions Corp., Hormel Foods Corp., American Foods Group LLC, Seaboard Foods LLC, National Beef Packing Company, Iowa Premium LLC, Smithfield Foods Inc., Smithfield Packaged Meats Corp., Agri Beef Company, Washington Beef LLC, Agri Stats Inc. and Webber, Meng, Sahl and Company Inc.

The original lawsuit alleged that since at least 2014 the companies "conspired and combined to fix and depress" compensation to employees at about 140 red meat processing plants across the country, in violation of the Sherman Antitrust Act. The companies named in the lawsuit produce about 80% of all red meat sold to U.S. consumers.

The lawsuit said senior executives at the companies established and approved hourly wage rates, annual salaries and employment benefits.

"This highly regimented process for determining compensation allowed defendant processors to compare compensation practices—and collectively suppress compensation—across their workforces," the employees alleged.

"Defendants implemented, monitored and enforced their conspiracy to fix and depress compensation paid to class members through a series of

overt acts."

The complaint said the companies conducted "secret" compensation surveys and held "secret" annual meetings that included executives from the companies named in the lawsuit.

"The purpose, intent, and outcome of these annual red meat industry compensation meetings was to depress and fix the wages, salaries and benefits of class members at artificially depressed levels," the complaint alleged.

In addition, the lawsuit said the companies were in direct communication via senior executives who "extensively discussed, compared, and in turn further suppressed compensation through email and phone communications."

The complaint said the companies entered into no-poach agreements, preventing the companies from recruiting the other companies' employees.

"The intended and actual effect of defendants' conspiracy to fix compensation has been to reduce and suppress the wages, salaries and benefits paid to class members since January 2014 to levels materially lower than they would have been in a competitive market," the employees said in the lawsuit. — **Todd Neeley, DTN staff reporter**

## FISH CREEK RANCH OF MONTANA

is proud to present its first public offering!

### 7 Registered Black Angus Bulls

April 4th, 2024

Five Valleys Livestock Auction

Missoula, MT



Featuring sons of

**Coleman Bravo 6313 (pictured), Coleman Rock 7200, Coleman Game Changer 7369, and Sitz Accomplishment 720f**

Featuring the Coleman Donna and Abigale lines on the maternal side

Halter-broke, gentle,  
and semen-tested  
prior to sale

Marc Haskins  
(406) 382-0556  
Marc@FishCreekRanchMontana.com

**FishCreekRanchMontana.com**

## Greens ask for court-ordered consultation

### AZ SUIT (from page 1)

riparian ecosystem degradation and species imperilment," the group claimed. "Removing

livestock from riparian areas is critical to curbing the extinction crisis in the Southwest."

The environmentalists sued the BLM in 2022 for the same reason, and the BLM said it initiated new consultations under the Endangered Species Act (ESA). The Center said its surveys contradict the agency's claims and show continued unauthorized grazing. The group claims livestock grazing damage spans across five different grazing allotments and has affected streams, streambeds and banks, and vegetation along the Agua Fria River, Ash Creek, Little Ash Creek, Sycamore Creek, Silver Creek and Indian Creek.

The Center for Biological Diversity contends they have surveyed 70% of designated critical habitat for the yellow-billed cuckoo in Arizona and New Mexico and found damage in 80% of their surveyed areas.

The surveys have led to litigation and agreements that resulted in federal agencies monitoring and removing livestock from riparian critical

habitat. The Center said agency compliance has been mixed.

A Feb. 1 hearing was held in New Mexico regarding feral cattle on public lands in the state. The hearing followed a 2023 lawsuit brought by the New Mexico Cattle Growers' Association against the U.S. Forest Service.

"Here, these livestock aren't being managed at all," an attorney for the government said at the hearing. "There is no one there to control them to keep them out of the riparian areas and cause that damage."

The Center for Biological Diversity and Maricopa Audubon Society concluded their lawsuit by asking the court to find BLM and USFWS in violation of the ESA by failing to complete consultation on the five grazing allotments in the national monument. They requested the court to order the agencies to reinstate and complete consultation and to take action to prevent any further adverse impacts to the species and their habitats. — **Anna Miller, WLJ managing editor**

— Family Ranching in the Nebraska Sandhills Since 1886 —

42<sup>nd</sup> Annual Bull Sale

# HEBBERT

Charolais Bulls

Selling 110 Charolais Bulls  
Saturday April 13<sup>th</sup>, 2024

— Trait Leading Calving Ease & Performance Genetics —

**Hebbert Ranch**

62075 Hebbert Lane  
Hyannis, NE 69350

**Y** Matt Hebbert: 308.458.8812  
Lacy Hebbert: 308.458.8823

**www.HebbertRanch.com**

**f** HebbertCharolaisRanch



Free delivery within 500 miles  
Backed by a Breeding Season Guarantee



ALL NEW PUREBRED PLATFORM

Bid.SuperiorLivestock.com

View & Bid Online



### YOUTH OPPORTUNITIES

(In an effort to serve the next generation of livestock producers, WLJ's Youth Opportunities calendar lists internship and scholarship information for agricultural- and livestock-focused students, listed by application deadline. If you have an internship or scholarship to announce, please email it to [editorial@wlj.net](mailto:editorial@wlj.net).)

**March 31**— Applications are open for the Montana Stockgrowers Association Marketing &

Communications Summer Internship. Details: [www.mtbeef.org/careers](http://www.mtbeef.org/careers).

**April 17**— Purina Animal Nutrition, along with the Land O'Lakes Foundation, has opened its scholarship program. Current high school seniors and undergraduate college students with livestock experience are eligible to apply for one of four \$5,000 scholarships. Details: [www.purinamills.com/scholarship](http://www.purinamills.com/scholarship).

# Federal climate regulation softens risk disclosure rules

California is the first state in the U.S. to pass laws that eventually require large corporations to publicly disclose greenhouse gas emissions and their climate risks.

The U.S. Securities and Exchange Commission (SEC) just followed suit. But it approved a weakened federal regulation that drops a proposed requirement for companies to report emissions from their supply chains and customer use of their products.

Since the federal rule was first proposed two years ago, the American Farm Bureau Federation (AFBF), California Farm Bureau, businesses groups, companies and others opposed the Scope 3 emissions reporting requirements. Scope 3 are indirect emissions that occur in the value chain, including upstream and downstream emissions.

Opponents argued that compliance cost and difficulty providing the data would be a burden, especially for farmers, who provide most raw products that go into the food supply chain.

AFBF said in a statement the onerous reporting requirements could disqualify small, family-owned farms from doing business with public companies, putting those farms at risk of

going out of business. The organization said, "Regulations intended for Wall Street should not extend to America's family farms."

"Farmers are committed to protecting the natural resources they've been entrusted with, and they continue to advance climate-smart agriculture, but they cannot afford to hire compliance officers just to handle SEC reporting requirements," AFBF President Zippy Duvall said. "This is especially true for small farms that would have likely been squeezed out of the supply chain."

In addition to relaxing reporting of Scope 3 emissions, the federal rule reduces reporting requirements for Scope 1, or direct emissions, and Scope 2, indirect emissions from the production of energy a company acquires for use in its operations. Companies are given discretion to report such emissions that they believe are significant.

SEC Chair Gary Gensler said in a statement the federal rule is specific on what companies must disclose and requires climate-risk disclosures to be included in a company's SEC filings, such as annual reports.

"These final rules build on past requirements by mandating material climate

risk disclosures by public companies and in public offerings," Gensler said. "The rules will provide investors with consistent, comparable and decision-useful information, and issuers with clear reporting requirements."

With the approval of the federal rule, attention turns to California.

Last fall, Gov. Gavin Newsom (D) signed Senate Bill (SB) 253, the Climate Corporate Data Accountability Act, which applies to businesses with total annual revenues exceeding \$1 billion. The law requires the California Air Resources Board (CARB) to develop and adopt the nation's first requirements for large corporations to publicly disclose their greenhouse gas emissions, carbon in supply chains and climate risks by Jan. 1, 2025.

In his Oct. 7, 2023, signing statement, Newsom called the deadline for implementation "infeasible," and stat-

ed the reporting protocol could result in inconsistent reporting.

"I am concerned about the overall financial impact of this bill on businesses, so I am instructing CARB to closely monitor the cost impact as it implements this new bill and to make recommendations to streamline the program," Newsom stated.

Newsom also signed SB 261, the Climate-Related Financial Risk Act, which requires companies doing business in California with more than \$500 million in annual revenue to submit reports that divulge how climate change threatens their business starting in 2026.

The governor's initial 2024-25 budget proposal pauses spending for implementation of the two climate laws.

"Farmers and ranchers are committed to addressing the challenges of climate change," said Christo-

pher Reardon, director of governmental affairs for the California Farm Bureau. "But these regulations only increase the burdens to those who grow food and fiber in this state."

California Farm Bureau expressed early opposition to SB 253 and SB 261, and shared its concerns with authors of the bills, Reardon said. In comments related to SB 253, the organization said the Scope 3 emissions reporting requirements would increase costs and potentially hurt small- and medium-sized farm employers. In submitted comments, the Farm Bureau stated SB 261 was premature pending release of the federal rule.

"The governor indicated he is concerned about impacts to California businesses from climate-risk disclosure requirements," Reardon said. "With the adoption of the federal decision, which dropped Scope 3 reporting requirements,

California should remove these requirements."

Many California food and agriculture organizations joined a California Chamber of Commerce-led campaign to "Stop SB 253." The coalition claimed that the disclosure requirements would act as a "hidden tax on small businesses."

In addition, AFBF, the U.S. Chamber of Commerce and others are suing California in U.S. District Court for the Central District of California, Western Division. Plaintiffs in the Jan. 30 lawsuit claim the two bills are unconstitutional and violate the interstate commerce clause and the First Amendment.

After the federal rule was approved, AFBF urged California to follow the SEC's lead by withdrawing its Scope 3 reporting requirements for any company doing business in the state. — **Christine Souza, Ag Alert assistant editor, California Farm Bureau Federation**

## Anticipating colostrum needs following wildfire

One of the impacts of the recent wildfire in Texas and western Oklahoma is the reality that some surviving heavily pregnant cows may have injuries that prevent them from feeding their calves following birth.

Dr. Rosslyn Biggs, a veterinarian and Oklahoma State University (OSU) Extension beef cattle specialist, and Dana Zook, OSU Extension west district livestock specialist, advise producers facing this situation to obtain a high-quality source of colostrum to ensure calves receive an immunity boost soon after birth.

Milking the cow or maintaining a supply of frozen colostrum are the best options for colostrum replacement. Commercially prepared colostrum replacers are acceptable if a cow-derived source is not available.

Colostrum replacement and colostrum supplements are the two commercially available options. They are two very different sources of colostrum that each play a different role for a new calf. When it is determined that calves have not or will not be able to obtain colostrum directly from the cow, a colostrum replacer should be used.

Colostrum replacers may be more costly than colostrum supplements, however, they may provide a more substantial boost in immunity beyond what a

supplement can provide.

Delays in a calf receiving colostrum have both short- and long-term impacts on the immune system. Ideally, a calf should receive colostrum within the first two hours of life. Administering colostrum to calves without a suckle reflex using an esophageal feeder should be done with extreme caution due to the increased risk of aspiration pneumonia. Consult a veterinarian if advice or assistance is needed to use an esophageal feeder.

On average, a calf should receive 5-6% of its body weight within the first four to six hours of life, with a repeated feeding of the same amount four to six hours later. About 2 quarts of colostrum should be administered to an 80-pound calf. Ongoing research supports early colostrum feeding is best if delivered by four hours of age. Understanding that most births occur unattended, producers should not wait to administer colostrum if there is evidence the calf has not nursed.

Cleanliness is important when collecting and administering colostrum. Esophageal feeders and bottles can serve as sources of disease if not adequately sanitized. Questions surrounding colostrum administration and calf care should be directed to a veterinarian or Extension educator. — **OSU Extension**

33rd Annual Bull Sale Friday, March 29, 2024 ~ Lunch @ Noon, Sale @ 1pm

### Selling Sons of...



SAV Abundance 6117



SAV Scalehouse 0848



SAV Renovation 6822



SAV Bloodline 9578



SAV Downpour 8794



SAV Glory Days 1832

- ◆ Silver Bit Bulls sire calves that gain, convert, & grade at the top end of thousands of calves in feedlots they've gone to. Silver Bit sired calves have consistently been the top selling calves on the summer Superior Livestock Video Sales.
- ◆ Silver Bit Bulls come from one of the strongest herds of Angus cows anywhere. Wide based, easy fleshing, good footed, good milking, with tight udders & small teats. Lots of generations of breeding like kind to like kind for a consistent maternal package.
- ◆ Embryo Program based on the best proven Angus Genetics
- ◆ Silver Bit Ranch AI's to only the **Best Proven Sires!**
- ◆ Low to Moderate birth weights for consistent, easy calving!
- ◆ PAP Tested ~ Semen Tested ~ Ultrasound Carcass Tested ~ BVD PI Free Tested

### What our customers have to say about Silver Bit bulls.....

"I have been buying Silver Bit bulls for over 30 years and have always been happy with how they put pounds on calves, produce mother cows with good bags and mothering ability, hold up on our range that is over 6000' altitude. Scott and Gwen are always great to deal with and always stand behind the bulls they sell." ....

Herb Whitworth, Elkhorn Ranch, Mackay, ID

"We have bought bulls from Scott & Gwen for several years and never been disappointed with the cattle. Being able to buy a set of bulls in volume that are full and half brothers from one place is great for us. We come back year after year for these bulls because they survive on the high desert we run on and that has also carried over and helped put longevity into our replacements. Since implementing Silver Bit Angus bulls, we have noticed our carcass reports getting better & better, that has earned us repeat buyers on the calves. The docility of the bulls has improved greatly over the years, and anyone can appreciate that. These are truly good bulls from outstanding people."

Pat Hendren & McCall Hopkins, Hendren Farms, Montevieu, ID

"Small Ranches have bought bulls from Silver Bit for more than 25 years. The bulls are easy to handle and produce some really nice calves. The calves have always done very well for us. They are easy to handle, they have good conformation & gain well. The replacement heifers do well in our mountainous terrain. We have been very satisfied with the bulls we have purchased & plan on continuing to add their lineage to our herd."

Kevin Small, Small Ranches, Dubois, ID

For More Information Contact.....

Scott & Gwen Whitworth 208 940 0433

silverbit\_ranch@yahoo.com



**SUPERIOR**  
LIVESTOCK AUCTION

ALL NEW PUREBRED PLATFORM

MOBILE PHONE VIDEO PREVIEW AUCTION  
bid.superiorlivestock.com | 800.422.2177

WATCH LIVE ON DISH CHANNEL 990

# Unique deal reached for middle Rio Grande irrigation district, state

New Mexico and Albuquerque-based irrigation officials have signed off on a first-of-its-kind cooperative agreement for “emergency, short-term and long-term” management of the Rio Grande.

The Interstate Stream Commission voted unanimously to allow its staff to enter an agreement with the Middle Rio Grande Conservancy District, which was signed after receiving approval from the irrigation board.

The deal will allow these governing bodies to better manage flood prevention, improve “water conveyance,” meet interstate legal agreements and build species habitat for endangered animals in the Middle Rio Grande, said Hannah Riseley-White, the executive director for the Interstate Stream Commission.

“It exemplifies our commitment to each other to work together in solving and tackling these problems,” she told commis-

sioners in the March 5 meeting.

The five-year agreement will allow for communication and coordination between the state and irrigation district officials and outline responsibilities in the partnership, according to a packet given to commission members.

The Interstate Stream Commission is a division of the New Mexico Office of the State Engineer, charged with the “broad powers” to protect, conserve, develop and investigate New Mexico surface waters—such as rivers, streams and lakes.

The Middle Rio Grande Conservancy District, based in Albuquerque, is the governmental body which oversees irrigation for land between Cochiti Dam to the Bosque Del Apache Wildlife Refuge. Irrigated lands in the district are ballparked between 55,000 to 58,000 acres with about 11,000 active irrigators, said Conservation Program Supervisor Casey Ish.

Top officials for the irrigation district and the state agency said the agreement puts an unofficial two-decade partnership to paper.

The state and district face colliding concerns of climate change causing more fires and floods in the region; difficulty in sending water downstream for legal agreements and a need to build habitats for endangered species, Riseley-White said.

As federal funds pour in from infrastructure and climate-adaptation projects, the agreement will help address difficult reaches in the irrigation district’s area, Jason Casuga, chief engineer and CEO for the irrigation district, told commissioners last week.

In a summary given to commissioners, the partnership is necessary to meet legal obligations to Texas and Mexico users downstream, made in treaties and a nearly 80-year-old agreement.

“The looming water cri-

sis is prompting an ‘all hands-on deck’ approach by water managers in the Rio Grande basin to ensure New Mexico can maintain water deliveries within the Middle Rio Grande under the Rio Grande Compact,” the summary said.

What’s in the cooperative agreement?

The agreement summarizes five projects expected under the partnership, but does not list costs or funding sources, saying that would be addressed in further contract negotiations.

Riseley-White said the parent agreement allows the state to move federal, state and local funds into contracted projects faster.

### The five anticipated mutual projects

- Buying and renting heavy equipment for floodplain restoration and vegetation removal for “improvements in conveyance” in the Isleta Reach and other Middle Rio Grande reaches.

- Contracts for “bosque

rehabilitation, channel maintenance, infrastructure,” in the Isleta Reach and other non-specified Middle Rio Grande reaches.

- Contracts for environmental monitoring, scientific studies and engineering.

- Development of an Isleta Reach River Management Plan for the active river channel and floodplain on the southern boundary of Isleta Pueblo to the San Acacia Diversion Dam, in “cooperation with other governmental agencies and stakeholders.”

- Evaluate anticipated critical threats in the Isleta Reach for immediate action.

### Concerns raised

Board members had questions for how the agreement might impact relationships with other irrigation districts and tribal governments of Cochiti, Santo Domingo, San Felipe, Santa Ana, Sandia and Isleta Pueblos.

At the March 5 meeting, board member Phoebe Suina (Cochiti), a hydrologist, asked if any of the six middle Rio Grande Pueblos were consulted, or going to be included formally in future project planning or agreements.

Riseley-White said the state’s intent would be engaging relevant parties, including tribes, on specific projects.

“I think those six Middle Rio Grande Pueblos are important partners for us in figuring out what this needs to look like, and it will be critical to engage with them effectively,” she said.

Casuga further responded that the projects would target “benefiting all middle Rio Grande users.”

“When we get into project specifics and the funding associated with those, that’s when I think we would engage individually with the constituents who would be affected by this,” he said.

Board member Greg Carrasco, a Las Cruces farmer and rancher, asked if this agreement impacts the state’s relationship with other irrigation districts.

Riseley-White replied that the agreement has no impact on other relationships.

State Engineer Mike Hamman addressed the commission, calling the agreement a “starting point” for the state to work with other irrigation districts, Pueblos and other water users to address “mutual interests” and leverage federal dollars.

Hamman noted upcoming settlements in adjudication for the six middle Rio Grande Pueblos’ water rights and the pending settlement agreement in the Rio Grande U.S. Supreme Court lawsuit between Texas and New Mexico, could operationally impact the Rio Grande and Rio Chama.

He said that meeting those legal agreements to ensure water in rivers flows to recipients poses a challenge to both entities, requiring a “symbiotic relationship” to turn it around.

“We’re in a compact-deficit situation drifting towards potential violation in theory,” Hamman said, referencing the Middle Rio Grande’s debit of about 25,000 acre feet owed to Elephant Butte Dam for users downstream in Texas and Mexico.

Hamman said both the irrigation district and the state were concerned about delays in construction on the El Vado Dam, and how that is impacting sending water downstream.

Before the vote, Suina urged soliciting Pueblos’ inclusion on upcoming projects, saying the land and water stewardship of the Pueblos has often been overlooked in the past century of water planning.

She noted that Pueblo governments have pushed back against assertions that the middle Rio Grande is “at the end of its life cycle,” saying that the river itself is a necessity.

“I want to encourage that engagement, encourage the collaboration, I see this (agreement) as a step towards that,” Suina said. “But even in that state, just not to forget our Pueblo communities.”

Suina voted yes, but appended her vote with a comment.

“I have confidence in Director Riseley-White to have that Pueblo engagement that enables me to say yes to this,” she said.

— **Danielle Prokop, Source New Mexico**

# MIDLAND BULL TEST

Join us for the *Final Sort* BULL SALE

**102 CONSIGNORS**  
**500+ BULLS**  
**23 STATES**

WE DEVELOP MORE THAN  
**2,000 BULLS ANNUALLY**

**April 4** Efficiency Tested Charolais • Hereford • Salers  
Simmental • South Devon • Red Angus

**April 5** Efficiency Tested Angus

MIDLAND BULL TEST offers commercial cattlemen and seedstock producers a unique opportunity to select top end bulls from around the country. Our test criteria is formulated with the success of the commercial cattleman at the forefront. We gather individual results and provide more proven information than anyone in the business. The Final Sort sale is your opportunity to select from one of the best bull lineups, you don't want to miss this sale!

[www.MidlandBullTest.com](http://www.MidlandBullTest.com)  
Contact us for a sale book!

**STEVE & AMY WILLIAMS** • Columbus, MT  
Cell: (406) 321-7046 • Office: (406) 322-5597 • E-mail: [bulls@midlandbulltest.com](mailto:bulls@midlandbulltest.com)  
**We are America's largest source of EFFICIENCY TESTED bulls.**

**HOOVES & HORNS** BY A.W. ERWIN

"Has anywun tot'bout takin' PawPaw to the Obtomtrist?"

# GOP senators demand response to waning ag exports

Republican senators are complaining to the Biden administration about the “continued erosion of critical markets for U.S. agricultural exports.”

The letter from 22 GOP senators comes as agricultural exports are falling, but also coming off the three best years in history as well.

The senators pointed to the spread in the U.S. agricultural trade deficit that is projected to reach \$30.5 billion for fiscal year (FY) 2024. “This decline is unsustainable, and we urge the Biden administration to immediately take action to improve the competitiveness of U.S. agricultural products abroad and reverse this trend.”

While pointing to expected fluctuations due to macroeconomics and market conditions, the senators said the current sharp decline in U.S.

exports “is directly attributable to and exacerbated by an unambitious U.S. trade strategy that is failing to meaningfully expand market access or reduce tariff and non-tariff barriers to trade.”

The senators demanded the Biden administration detail “new or improved trade agreements” in 2024 and detail efforts to expand U.S. market access.”

To help boost export sales, Agriculture Secretary Tom Vilsack announced the Regional Agricultural Promotion Program (RAPP) last November with \$1.2 billion in funding—including \$300 million for FY 2024. The program will release funds starting in June to checkoff groups and others to promote U.S. commodities to emerging export markets. Groups that receive the funds would look to promote their commodities or

products to markets that are not already among their largest markets.

The RAPP program was started after leaders on the Senate Agriculture Committee wrote Vilsack to find a way to boost funding for export programs.

The senators’ letter comes just as China has canceled two of the largest wheat sales in history. China has drawn increasing ire from Congress and states, which are increasingly clamping down on Chinese investments and restricting any attempts by Chinese companies to buy

land. The House Agriculture Committee also announced a hearing for March 20, “The Dangers China Poses to American Agriculture.”

China bought \$29 billion in U.S. agricultural goods in 2023, after buying a record \$38.1 billion in 2022. Sales to China continue to fall. In January, sales to China were \$3.1 billion, down 31% from a year earlier.

## Looking at the numbers

The export numbers are a little different here because

the senators used the fiscal year instead of calendar year that USDA’s Foreign Agricultural Service (FAS) uses.

Agricultural exports for calendar year 2023 were nearly \$174.9 billion, the third-highest in history, behind only \$195.9 billion in 2022 and \$176.6 billion in 2021, according to the Foreign Agricultural Service (FAS).

In the six previous years before 2021, U.S. agricultural exports averaged around \$142.6 billion a year.

At the same time, agricultural imports also have hit

record levels as well. Imports in 2023 were valued at just under \$196 billion, putting the agricultural trade balance at a record \$21 billion. Agricultural imports peaked at \$199.3 billion in 2022—the same year as record export values—ending the year with a \$3.4 billion negative agricultural trade balance.

For January, FAS shows exports were nearly \$14.9 billion, but imports were \$17.4 billion, reflecting a negative trade balance of \$2.5 billion for the month. — **Chris Clayton, DTN ag policy editor**

## Ag groups applaud rule, some ask for more

### LABEL RULE (from page 1)

that took place in the U.S. Establishments voluntarily using the USA product claim will need to comply with new regulatory requirements by Jan. 1, 2026. USDA has published new guidance online to provide examples of claims and types of documents to support claims. The guidance will be open for a public comment period for 60 days upon its posting in the Federal Register.

### Grant program

USDA has announced its first set of awards for simplified equipment only projects through the Local Meat Capacity grant program.

Awards will be given to establishments in 27 states and Puerto Rico, ranging from \$10,000-250,000 to purchase processing equipment. For example, Five Marys Custom Meat Co. in Northern California will receive \$250,000 to support the purchase of equipment to compost animal carcass waste and increase value-added processing.

USDA will also launch a Website Monitoring Program focused on Federal Seed Act brand and variety name compliance. The department said the program will boost transparency for the farmer at the point of sale from seed companies.

### Industry reactions

Ag groups were pleased to see the rule’s finalization, although some argued the rule doesn’t go far enough.

The National Cattlemen’s Beef Association (NCBA) said it appreciates USDA’s effort to address the loophole in labeling imported beef as being a product of the U.S.

“During the implementation period, NCBA’s focus will remain on ensuring that these changes result in the opportunity for producer

premiums while remaining trade compliant,” said NCBA Executive Director of Government Affairs Kent Bacus in a statement.

The U.S. Cattlemen’s Association (USCA) said it has been working for years to clarify confusion at the consumer level regarding beef product labeling.

“If it says ‘Made in the USA,’ then it should be from cattle that have only known USA soil. Consumers have the right to know where their food comes from, full stop,” said USCA President Justin Tupper.

Ranchers-Cattlemen Action Legal Fund, United Stockgrowers of America (R-CALF) welcomed the new rule but called on Congress to pass mandatory country-of-origin labeling (MCOOL).

“No longer will multinational meatpackers be allowed to trick consumers into believing that foreign beef was produced by United States cattle farmers and ranchers,” said R-CALF USA CEO Bill Bullard. However, he added, MCOOL needs to be passed to require all beef sold in grocery stores to be labeled as to where the animal was born, raised and slaughtered.

“Only then will consumers be informed as to which beef was produced by American cattle farmers and ranchers and which beef was produced under some foreign country’s food safety regime,” he said.

The American Farm Bureau Federation (AFBF) expressed their support for the rule. “America’s families have taken a greater interest in where their food comes from, and this voluntary rule provides the flexibility to farmers and ranchers who choose to highlight the state, region or country where their poultry and livestock were raised,” said AFBF President Zippy Duvall in a statement. — **Anna Miller, WLJ managing editor**

# WORLD

renowned

## GENETICS

— 43rd annual bull sale —

### SATURDAY • APRIL 20 • 2024

12:00 MT • AT THE RANCH • ISABEL • SOUTH DAKOTA

# WORTH

the drive WORTH the wait


SELLING 219 ANGUS BULLS & 222 CHAROLAIS BULLS

SALE BROADCASTED BY:

**D L M S** **DVAuction**

www.dlms.ca Broadcasting Real-Time Auctions

**LT Global 3322 PLD ET**



CE	BW	WW	YW	MILK	MTL	SC	REA	MB	TSI
15.4	-3.9	73	124	27	63	1.7	0.93	0.24	268.41
15%	15%	15%	25%	35%	20%	3%	9%	15%	25%

LT Atlas x LT Blue Value | AICA EM989731

**LT Shortcut 342**



CED	BW	WW	YW	SC	MILK	CLAW	ANGLE	MB	\$M	\$W
9	-0.5	70	119	+1.09	28	+0.44	+0.42	+0.71	77	70

Sitz Resilient x Styles Exchange Rate (Barstow Cash) | AAA 20699592


**LT Seamless 3552 PLD**



CE	BW	WW	YW	MILK	MTL	SC	REA	MB	TSI
11.7	-0.3	81	148	29	70	1.4	0.75	0.15	286.67
45%	65%	4%	2%	20%	4%	15%	40%	40%	4%

Powerstroke x Rushmore | AICA M989545

**LT Falcon 3011**



CED	BW	WW	YW	SC	MILK	CLAW	ANGLE	MB	RE	\$M	\$W
12	-0.2	74	128	1.55	26	0.23	0.28	0.40	0.69	104	77

S Armstrong x U-2 Coalition | AAA 20781694

**LT Landslide 3410 PLD**



CE	BW	WW	YW	MILK	MTL	SC	REA	MB	TSI
5.8	1.3	91	156	29	75	1.6	0.75	0.01	283.49
90%	90%	1%	1%	20%	1%	5%	40%	90%	6%

LT Governor x Fargo | AICA M989808

**LT Fireball 3172**



CED	BW	WW	YW	SC	MILK	CLAW	ANGLE	MB	RE	\$M	\$W	\$C
4	2.1	69	124	0.66	19	0.35	0.42	0.71	0.52	71	57	256

LT Firesteel x SAV Circuit Breaker | AAA 20800758



## LINDSKOV'S LT RANCH

BUILDING ON QUALITY & SERVICE SINCE 1981

PO BOX 24 • 13291 SD HWY 65 • ISABEL • SD 57633

BRYCE LINDSKOV • 605.850.3887 • BRYCE@LINDSKOV RANCHES.COM

TODD LINDSKOV • 605.850.8132 • TODD@LINDSKOV RANCHES.COM

KENT MCCUNE • SALES & MARKETING DIRECTOR • 605.850.9493 • KENT@LINDSKOV RANCHES.COM

LINDSKOVSLTRANCH.COM

# 20<sup>th</sup> ANNUAL Lee's Cattle Co. BULL SALE

THURSDAY, APRIL 4<sup>th</sup>, 2024 @ 1PM MDT  
BRUSH LIVESTOCK | BRUSH, COLORADO

**Selling 60** SimAngus Bulls, **7** Angus Bulls & **2** Red Angus Bulls.

**Also Selling 20** first calf heifer pairs.

All bulls are 2 year old bulls.

SONS OF THESE HERD SIRES WILL BE FEATURED APRIL 4...



KCCI FOLSOM 512F



W/C BANKROLL 811D

*Your Colorado Seedstock Connection!*

watch & bid online  
**LiveAuctions.TV**



JOHN LEE, OWNER 602.541.8826  
HUMBERTO MONTES, RANCH MGR. 602.541.9791  
WWW.LEESCATTLE.COM | like us on f

Catalogs mailed on request, Please contact the ranch.



## STORY SHORTS

### Salmon die off in Klamath River

The California Department of Fish and Wildlife (CDFW) reported the loss of approximately 830,000 fall-run Chinook salmon fry released from Fall Creek Fish Hatchery, presumed to have succumbed to gas bubble disease in the Klamath River. The fry were released on Feb. 26 into Fall Creek. According to CDFW, despite suitable water quality conditions, monitoring data downstream indicated significant mortality likely due to gas bubble disease incurred as the fry migrated through the Iron Gate Dam tunnel. CDFW said they will plan all future salmon releases below Iron Gate Dam until its removal, which is slated for later this year. The annual fall-run Chinook salmon production goal for the hatchery is to raise and release 3.25 million fish—1.25 million released as fry, 1.75 million as smolts and 250,000 as yearlings.

### Sausage recalled due to foreign matter

USDA's Food Safety and Inspection Service (FSIS) announced the recall of approximately 35,430 pounds of Johnsonville turkey kielbasa sausage that may be contaminated with foreign materials, specifically rubber pieces. The recalled products are 12-oz. vacuum-packed packages of "Johnsonville POLISH KIELBASA TURKEY" sausage with best-by dates "05/17/24" and "05/18/24" and establishment number "P-32009" printed on the packaging. The sausages were distributed to retail stores across the country. FSIS is concerned that some products might be in consumers' refrigerators. Consumers who have bought these items are advised not to consume them and instead dispose of them or return them to the store where they were purchased.

### CO land rental and rates survey open

Colorado State University Extension is conducting its annual survey to gather data on land rental and custom rates for different agricultural activities and lease agreements in the state. The information gathered from various stakeholders is significant for private, federal and state lands, influencing various decisions and operations within the agricultural sector. The survey results are used by producers, ag lenders, county assessors, the Colorado Department of Agriculture, land appraisers and more. The survey can be completed at [tinyurl.com/2s3uj7dv](http://tinyurl.com/2s3uj7dv).

### OR wolf removal authorized

The Oregon Department of Fish and Wildlife (ODFW) authorized on March 11 the removal of up to two wolves from the Grouse Flats Pack in Wallowa County, OR, due to chronic depredation incidents. The authorization allows landowners or agents to remove wolves on private pastures until April 30. Three confirmed depredation events since October 2023 prompted the request for lethal removal, with two wolves already removed under the "caught in the act" provision on March 6. The latest depredation occurred on March 6 on private land in Wallowa County, resulting in the death of a bull. The producer is employing various non-lethal measures to mitigate conflicts, with ongoing updates to be provided following the permit's expiration or extension.

### Low Rio Grande runoff expected

Water managers from the Bureau of Reclamation are expecting low spring runoff in the Rio Grande River. The Natural Resources Conservation Service forecasts inflow to El Vado Reservoir from March to July at just 46% of the median. With Elephant Butte Reservoir currently at 25% capacity compared to 14% at the same time last year, irrigation releases started earlier. Releases from Elephant Butte Dam began on Feb. 15, while those from Caballo Dam started on March 8. Stakeholders can anticipate annual operating plans for the Rio Grande and Pecos rivers to be released on April 18, providing insight into river conditions, irrigation and reservoir operations.

### CO opens first sous vide plant

On Feb. 5, Colorado Premium—a protein processor serving retailers, restaurant chains and meal delivery services—unveiled its latest venture, a 175,000-square-foot sous vide protein processing facility, marking its third plant and first dedicated to sous vide. "Sous vide cooking has increased in popularity as restaurant operators seek to consistently deliver high-quality, great tasting products at scale with less reliance on backhouse labor," said Dan LaFleur, president of Colorado Premium. "We have built our business by leveraging our culinary and manufacturing expertise to support our customers' growth initiatives and this facility provides the capacity to do that for many years to come." The Greeley, CO, facility occupies a 20-acre site acquired by Colorado Premium in 2022. The facility is expected to employ up to 275 people at full capacity, and the plant's strategic location allows for future expansion. Colorado Premium's headquarters and primary production site are also in Greeley, with an additional processing facility in Denver, totaling over 700 employees across the company.

Selling 76 Angus Bulls & 158 Replacement Heifers



DENTON, MONTANA



Hilltop Impact 336L

calved: 02/12/23 tattoo: 336L reg: 20876402

CED	BW	WW	YW	Milk	Marb	RE	\$M	\$W
+11	+0.0	+70	+121	+32	+36	+58	+79	+78



Hilltop Rally 396L

calved: 03/17/23 tattoo: 396L reg: 20884501

CED	BW	WW	YW	Milk	Marb	RE	\$M	\$W
+7	+2.1	+84	+142	+27	+50	+81	+62	+73



Hilltop Impact 307L

calved: 01/20/23 tattoo: 307L reg: 20886092

CED	BW	WW	YW	Milk	Marb	RE	\$M	\$W
-4	+6.1	+100	+162	+18	+12	+75	+69	+69



Hilltop Rally 348L

calved: 02/19/23 tattoo: 348L reg: 20876408

CED	BW	WW	YW	Milk	Marb	RE	\$M	\$W
+13	-0.5	+72	+123	+30	+38	+57	+66	+71

### Annual Production Sale

Tuesday

# APRIL 9<sup>th</sup> 2024

Lunch at Noon  
Sale at 1:00 p.m.

3 miles south of  
Denton, Montana

Contact us  
for your Sale  
Book!

Cory & Tammie Poser 406/ 366-3461  
Gary & Carmen Poser 406/ 567-2627  
1831 Everson Road • Denton, MT 59430  
[cory.poser@icloud.com](mailto:cory.poser@icloud.com)



[www.HilltopAngus.com](http://www.HilltopAngus.com)

# WA will pay rebates to farmers hit with fuel surcharges under climate law

Farmers and truckers who say they've unfairly paid fuel surcharges under Washington's cap-and-trade program may soon get some relief.

State lawmakers this session set aside \$30 million for farm fuel users and haulers of agricultural goods to receive rebates. This follows frustrations among farmers and truckers who say they are not receiving promised exemptions from the extra charges.

"This is a victory for agriculture to have that acknowledgment from the Legislature that we weren't just making this up," said Bre Elsey, director of government affairs at the Washington Farm Bureau. "There has been a violation of the law."

But the \$30 million will likely only cover a fraction of the farmers who have been affected, she said. Elsey added that more needs to be done to get the exemption system working as intended. The Farm Bureau has sued, trying to force an overhaul of it.

Under the state's Climate

Commitment Act, industrial polluters must hit certain emissions thresholds every year. If they can't, they must purchase allowances from the state, which uses the revenue to pay for programs to fight climate change.

Refiners of gasoline and diesel are subject to the law. But it's supposed to exempt fuel used for agriculture, commercial fishing and aviation from the pollution caps and any extra fees.

But when emissions auctions began last year, farmers and others eligible for exemptions said they began to get hit anyway with surcharges. Fuel distributors have agreed that the exemptions program is not working.

Some fuel distributors have found ways to exempt farmers from fees they've added on since the climate program went into effect, but there have been difficulties in tracking fuel, especially for small farmers who may go to a gas station instead of buying in bulk from a supplier.

Coming into this legis-

lative session, Rep. Drew Stokesbary (R-Auburn) said the fuel exemption program was among the top issues he heard about from constituents.

"This is certainly better than nothing, but I don't think folks that are on the ground would say it comes anywhere close to solving the problem," Stokesbary said.

The \$30 million in the budget comes from the revenue the state received from its quarterly pollution auctions, and it will go to the Department of Licensing, which must start doling out rebates by Sept. 1.

Under the law, the department must base payments on a signed attestation from farmers and other eligible purchasers who can show receipts with overcharged fuel costs. The amount of money someone gets will be based on how many gallons of fuel they've used, ranging from \$600 for less than 1,000 gallons to \$4,500 for more than 10,000 gallons.

"We wanted to make the

rebates as easy as possible for folks and streamlined as much as possible," Sen. Joe Nguyen (D-White Center) said at a press conference on the budget last month.

If voters approve an initiative heading to the ballot in November that would repeal the Climate Commitment Act, the funds will no longer be available for these rebates. However, Elsey said with such a small amount of money and so many farmers wanting it, getting the funds out in two months likely won't be an issue.

Elsey said she estimates the need is much more than \$30 million, likely in the hundreds of millions, but without having concrete data, the state has not been able to calculate a total.

"None of these farms will be made whole," she said.

Under the budget language, farmers are encouraged to submit all of their fuel receipts to help the state start a database that it can use in the future if the rebate program continues.

## Exemptions still not fixed

Farmers and truckers continue to blame the Department of Ecology for failing to fix problems with the exemptions system they've flagged to the department for more than a year.

"This is ultimately a problem that Ecology has to own," Senate Minority Leader John Braun (R-Centralia) said.

The department hosted a series of roundtable discussions last year to determine the best path forward with the exemptions, but Elsey said not much came out of the meetings. She said they did not include anyone who represented the retail gas industry where many of the problems remain.

The Washington Farm Bureau is also awaiting a trial in a lawsuit meant to push the department to open up rulemaking on the exemptions process. Elsey said the rulemaking would force the department to have discussions with industry about

how to fix the problems.

Caroline Halter, spokesperson for the Department of Ecology, said there are now large fuel suppliers in almost every part of the state that are offering exempt fuel, but acknowledged that there are still challenges in delivering the exemptions to gas stations or unstaffed locations.

The department has issued updated guidance for exempting fuels, and Halter said the department is continuing to provide technical assistance to fuel suppliers and working to address challenges around off-farm sales.

Halter said the department supported the rebate program to offset the "undue costs" that farmers have felt during the first year of the program.

"The law does not give Ecology the authority to set fuel prices or dictate pricing strategies," Halter wrote in an email, "but we're continuing to work with suppliers and farmers to resolve these issues." — **Laurel Demkovich, Washington State Standard**

## Breaking down the date labels on meat packages

Ever wonder why different food has different indicator dates on the package and what they mean?

It can be really confusing to look at an indicator date on a package and see a variety of different terms. If there is a misunderstanding of what the date means, the safety of the food product and those consuming it could be compromised. Michigan State University (MSU) Extension recommends keeping your refrigerator at the proper temperature, less than 40 F. It is important that continuous refrigerated or frozen storage be used with meat products that are not shelf stable.

**Sell by:** This creates an easy date for the retailer to know when the product has to be removed from their shelf and disposed of instead of being sold. In general, consumers have one to three days to use that meat product if it is fresh before there would be concern from a safety standpoint.

Typically, retailers will mark down the price of a product if the sell-by date is near. That can create an opportunity for consumers to purchase something that is still acceptable from a safety and quality standpoint at a bargain as long as the consumer goes home and uses the product right away.

**Use by/freeze by:** This type of dating system is clearest for the consumer. If it is a fresh product, it needs to be consumed on or before the use by date on the package or frozen if additional storage time is desired. Frozen storage times for meat can vary from one to 12 months depending on the species (chicken, turkey, pork, lamb, beef) from a quality aspect. If the product is frozen and kept

frozen, safety does not become an issue.

**Packaged on:** This type of date is often used on fresh meat but also leaves the most room for confusion or error on behalf of the consumer. Most fresh meat can be stored at refrigerated temperatures for up to three days after packaging in typical meat tray overwrap style or butcher paper wrap packaging. Longer storage time of up to seven days from retail purchase can be used if the product is vacuum packaged with a good seal and the air is removed from the package.

**Expiration date:** For consumers, expiration dates are very user friendly. Simply, the product needs to be used on or before the expiration date from a safety standpoint. These types of dates are not as common on meat packages but are found with some processed meat products.

Another question that is common relates to processed meat products. Once a processed meat product (ham, hot dog, lunchmeat, etc.) package is opened, the product should be good for up to seven days unless another type of date is on the package and has passed. After the seven days, the product should not be consumed.

That means if a package of hot dogs is opened up and a few are prepared and eaten, within seven days the rest of the hot dogs need to be eaten or the remaining ones can be frozen. If you go to the deli and receive sliced lunchmeat, eat that within seven days.

Stay on top of dates and acceptable storage times to reduce food waste. But when in doubt, throw it out. — **Jeannine Schwehofer, MSU Extension**

## STUBER RANCH'S 56th ANNUAL SALE

### Saturday, April 20, 2024 at the Ranch • 1 p.m. (MDT)

Joe Goggins, Auctioneer | 10 miles north of Bowman or 16 miles south of Amidon on Hwy 85, then 5 miles west, ½ mile south

Selling 90 HORNED & 15 POLLED YEARLING BULLS + 15 FALL BULLS  
50 TOP-END Registered Heifers  
80 HOME RAISED Commercial Females — 60 HEREFORD, 20 BLACK WHITEFACE



Lot 2 – 44470859

Son of CL1 DOMINO 0186

CED	BW	WW	YW	MM	REA	MARB	BMS1	CHBS
1.9	3.7	66	110	33	0.60	0.21	374	140

- Suberb genotype and phenotype
- Truly elite individual—big butt, tons of volume
- Genuine top side—excellent muscle shape
- Big scrotal—massive hip—good side length
- Backed up by three great cows that were the
- Kids show heifers—24H, 028 and 01K

Featuring sons and daughters of —

BCC DOMINATOR 619D

SR DOMINATE 308F

CL 1 DOMINO 0186H

HH ADVANCE 0159H

BIRDWELL VANGUARD 5022 9337

STARDANCE M8086

WHR BEEFMAKER 250G

CL 1 DOMINO 993

CHURCHILL MARK DOM 697D

CL 1 DOMINO 942G

SR SUSTAIN 808F

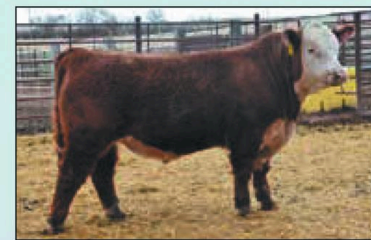


Lot 44 — 44482181

Son of WHR 290E B901 BEEFMAKER 250G

CED	BW	WW	YW	MM	REA	MARB	BMS1	CHBS
2.2	3.2	77	127	36	0.48	0.31	457	158

- Mom is a half-sister to Stardance 8086
- Stout made, ex. rib, big hip and quarter, big BMI



Lot 94 — P44474092

Polled son of SR DOMINATE 308F

CED	BW	WW	YW	MM	REA	MARB	BMS1	CHBS
1.1	2.9	65	106	29	0.64	0.04	387	126

- Dominate son out of Expedition's mother
- Eye appeal, teat and carcass—Elite profile

Weather and time didn't allow pictures of the heifers – check catalog or videos on website.

Semen available on most sires

Updated information on our website – [stuberranch.com](http://stuberranch.com)

LET US PUT YOU ON OUR MAILING LIST – VISITORS WELCOME ANYTIME

STUBER RANCH | 7606 149th Ave SW | Box 56 | Bowman, ND 58623

Roger 701-523-5371  
Cell 701-523-6813

Sale Barn 701-523-3522  
Mac 701-440-0015

Duane 701-523-3496  
Cell 701-523-1479

DVAuction  
Bred and Raised Real-Time Auctions

# Opposition to EATS Act is over Chinese influence

A group of 10 House conservatives added their voices to opposing a bill introduced to reverse the Supreme Court's decision last year on California's Proposition 12,

saying the bill would help foreign-owned pork production "under the control of the Chinese Communist Party."

The letter to the chair and ranking member of the

House Agriculture Committee by the 10 Republicans said, "We share with you an unshakeable commitment to our nation's farmers."

Still, the 10 Republicans

urged committee leaders to not include H.R. 4417, the "Exposing Agriculture Trade Suppression (EATS) Act, or any similar language that serves to nullify state laws and standards for agricultural production in the 2024 Farm Bill."

The Republicans in their letter focused heavily on the influence of foreign national companies on the pork industry.

The letter was led by Rep. Anna Paulina Luna (R-FL-13) and co-signed by Rep. Bob Good of Virginia (R-05), chairman of the conservative House Freedom Caucus, as well as Florida Reps. Byron Donalds (R-19) and Matt Gaetz (R-01), Marjorie Taylor Greene (R-GA-14), Nancy Mace (R-SC-01), Andy Biggs (R-AZ-05), Matt Rosendale (R-MT-02), Jeff Van Drew (R-NJ-02), and Tim Burchett (R-TN-02).

None of the lawmakers who signed the letter serve on the House Agriculture Committee. The EATS Act was introduced last June by Rep. Ashley Hinson (R-IA-02), a month after the 5-4 Supreme Court decision that upheld California's Prop 12. Sen. Roger Marshall (R-KS) led the introduction of an identical bill in the Senate.

Prop 12 prohibits sales of pork in California from swine not provided at least

24-square-feet of floor space during birthing and weaning. The law essentially sets standards for pork production outside of California for any meatpacker wanting to sell pork within the state.

The letter from some of the most conservative members of the House follows a letter last August from 171 House members and 30 members of the Senate who also opposed the EATS Act. That letter was led by House Democrats.

Agriculture Secretary Tom Vilsack told House Agriculture Committee members that agricultural producers are going to face "chaos in the marketplace" if Congress doesn't address the Prop 12 case. Vilsack pointed out that "chaos" can be created when each state has the ability to define for itself what farming techniques or practices are appropriate.

"I'm not sure that this Congress is going to be able to pass legislation, but in due respect, I would suggest that if we don't take this seriously, we're going to have chaos in the marketplace. That's because there's nothing preventing any state from doing what California did."

The government of Canada could bring a trade case against the U.S. over the situation as well because Canadian farms exported 6.7 mil-

lion hogs to the U.S. in 2023 as feeders or direct to slaughter.

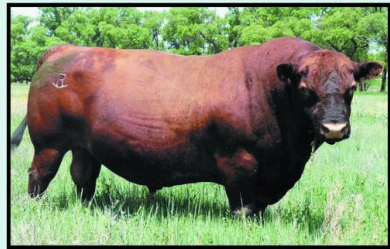
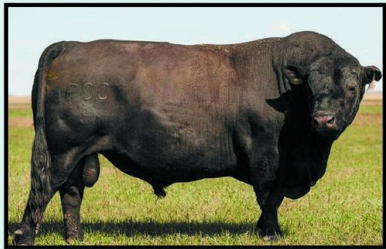
The Republicans in their letter said they are "gravely concerned about the infiltration of American pork production by foreign adversaries," pointing to the Chinese ownership of Smithfield Foods and the \$5 billion loan from the Bank of China that helps finance the purchase "of this one-time, legacy American-owned farm business." The lawmakers also pointed to the U.S. pork production of Brazil's JBS, noting that "just two foreign companies control production and distribution of 40% of the U.S. pork supply."

The EATS Act, the lawmakers stated, "is simply a veiled attempt by these foreign-owned corporations to subvert the will of American voters." The lawmakers added that California and Massachusetts, which has a similar law now, would take up just 6% of the pork market, though other industry estimates put the California market higher than that.

The lawmakers said Congress should protect the interests of American farmers and not abandon long-held principles of federalism. Instead, "Congress should focus on reducing Chinese influence on American production agriculture." — **Chris Clayton, DTN ag policy editor**

## Are You Tired... of Buying Bulls that Fall Apart?

We specialize in Thick, Easy-Fleshing Bulls that are Developed *Without Grain*



Because of the way our bulls have been bred and developed, they can breed *twice as many cows* for *twice as many years* as bulls coming out of other programs.

**466 Bulls — Three Bull Sales**

**Cameron, Texas — April 2**

**Springfield, Missouri — April 4**

**Burlington, Colorado — April 15**

**Angus — Red Angus — Polled Hereford — Heat-Tolerant**

- ◆ One-Year Guarantee
- ◆ Guaranteed Calving Ease
- ◆ Selling Bulls for 34 Years... and Counting
- ◆ Fleshing Ability has been Bred In — *NOT Fed In*
- ◆ Drought Tolerant and Parasite Resistant
- ◆ Evaluated and Scored for Disposition, Fleshing Ability, Muscling, Thickness, Masculinity, Grass Efficiency and Much More
- ◆ Over 60 Delivery Points across the Nation



**PHARO CATTLE COMPANY**

[www.PharoCattle.com](http://www.PharoCattle.com)

800-311-0995 Bulls@PharoCattle.com

Call or Email for a Sale Catalog and/or Newsletter

## Tribes, US sign MOU for collaboration

### RIVER IMPASSE (from page 1)

ahead and said their goal is to promote a consensus among the seven states while addressing the Upper Basin's long-term sustainability.

In the letter to BOR, the Upper Basin states said they would explore parallel activities outside of the post-2026 NEPA process to support Upper Basin interests, including voluntary conservation, flexible reservoir operations, and recognition of settled but undeveloped Tribal water rights in the Upper Basin.

### Lower Basin

The Lower Basin states of Arizona, California and Nevada submitted a plan that not only considers water in Lake Mead and Lake Powell but uses "the total volume of water in live storage," which includes the Flaming Gorge Reservoir in Wyoming, the Blue Mesa

Reservoir in Colorado, the Navajo Reservoir in New Mexico and Lake Havasu in Arizona.

According to the plan, under typical hydrologic circumstances, the measures adequately safeguard around 13 million acre-feet (an acre-foot is 325,851 gallons) of water in active storage, constituting 23% of the total system capacity. This safeguard serves as a crucial buffer against forthcoming operational uncertainties. The Lower Basin Alternative would manage water usage across all reservoir conditions: surplus, normal and reduction periods.

Under the plan, when the total volume contents range from 69% to 58% on Aug. 1, the reduction volumes for water users in the Lower Basin states and Mexico for the following calendar year will increase from 0 to 1.5 million acre-feet.

If the total volume contents drop below 58% but remain above 38% on Aug. 1, a reduction of 1.5 million acre-feet would be imposed on water users in the Lower Basin states and Mexico for the subsequent calendar year.

However, if the total system contents fall below 38% but stay above 23% on Aug. 1, the reduction volume imposed on water users in the Lower Basin states, the Upper Basin states and Mexico for the following calendar year would increase from 1.5 million acre-feet at 38% to 3.9 million acre-feet at 23%. Any amount exceeding 1.5 million acre-feet would be divided equally between the Lower Basin states, Upper Basin states and Mexico.

"We need new ways of thinking to solve problems that have been unresolved for nearly a century and solutions for future challenges like cli-

mate change and extended drought—that's what the Lower Basin Alternative does," Colorado River Commissioner J.B. Hamby said in a statement. "Each basin, state, and sector must contribute to solving the challenges ahead. No one who benefits from the river can opt out of saving it."

### Tribes

On March 4, UCRC signed a memorandum of understanding (MOU) with six Colorado River Tribes to encourage collaboration and pursue shared goals and priorities of the river.

The Jicarilla Apache Nation, Navajo Nation, Ute Mountain Ute Indian Tribe, Southern Ute Indian Tribe, Ute Indian Tribe and the Shivwits Band of Paiutes and the commission will meet every two months.

The MOU will not address matters concerning sovereign-to-sovereign relationships among individual Tribes, individual Upper Basin states and the U.S., as these matters fall beyond the jurisdiction of UCRC. The MOU aims to be inclusive of all Tribes and any Tribe not initially signatory to the MOU can join by submitting a written notice expressing their desire to participate.

"This MOU is a testament to our enduring connection to this sacred resource and a recognition of the critical role Tribal voices play in its protection," Vice Chairman Lorelei Cloud of the Southern Ute Indian Tribe said in a statement. "Together, we are united in ensuring that the Colorado River flows, today and for generations to come." — **Charles Wallace, WLJ contributing editor**

## THE BULL PEN

• BUYING SELLING TRADING OFFERING ANIMALS PRODUCTS SERVICES EQUIPMENT •



### Angus Bulls for Sale

Private Treaty Sales  
Big, Stout and Range Ready  
Performance Tested  
Fertility Tested  
DNA Enhanced EPD's  
Priced for the Commercial Cowman

**BRUMFIELD  
ANGUS RANCH**  
Wilsall, MT

Contact:  
Kevin Gallagher 406.729.3010  
Mitch Mather 406.223.1206  
[www.BrumfieldAngusFarms.com](http://www.BrumfieldAngusFarms.com)



Raising  
Registered  
Angus  
Since 1974

"Concentrating on the Basics"

Annual Bull Sale  
April 19, 2024  
Baker, Montana

Bulls will be on a ration to gain two pounds a day  
Bulls will not be fat with a target of having 1/10 of an inch of Back Fat  
Bulls are developed in large pastures to ensure soundness

Degrad Family - 406-775-8861 - P.O. Box 937 - Baker, MT 59313  
Cows and heifer calves for sale this fall - [www.degrandangus.com](http://www.degrandangus.com)

# Livestock respiratory issues expected following wildfires

Weeks after the smoke has cleared from the wildfires in the Texas Panhandle, the Texas A&M Veterinary Medical Diagnostic Laboratory (TVMDL) is alerting livestock owners to watch their surviving livestock for respiratory issues.

Alexis Thompson, DVM, Ph.D., DACVPM, veterinary diagnostician at the Texas A&M Veterinary Medical Diagnostic Laboratory in Canyon, said the diagnostic lab expects to see an uptick in samples from livestock that were near the flames or smoke from the wildfires.

"Those on the ground are now reporting respiratory signs such as heavy breathing and wet coughs from cattle," Thompson said. "Smoke has a high concentration of fine particulate matter, which can lead to respiratory irritation in animals, as well as humans."

"I suspect in the coming weeks we will have a lot of people asking questions on infectious causes of bovine respiratory disease. There will be a lot of secondary bacterial infections in cattle's lungs because of damage from

smoke inhalation, which can also spread throughout the body and lead to lethargy, weakness and an elevated temperature."

## Effects on livestock

The warm-to-hot air from wildfires can lead to damage in the respiratory tract as well, Thompson said. The combination of these factors can damage the integrity of the respiratory lining and lead to fluid in the lungs, also known as pulmonary edema.

Cattle with pulmonary edema can have an increased respiratory rate and effort. Some may have wet coughs and serous discharge from their nose that ranges from clear to yellow to light pink.

Thompson said antimicrobials will not help with the initial damage but may help prevent secondary bacterial infections. However, she expects the secondary wave of mortalities will likely stem from this.

"Unlike in human medicine, our medical interventions for cattle with smoke inhalation are limited, and euthanasia may be the best option for

many of them," she said.

All animals—cattle, horses, chickens, companion animals—can be affected by smoke inhalation and may show similar signs. More treatments are available for horses and companion animals than cattle and poultry.

"Our poultry can get inflammation in their air sacs and lungs, which can result in coughing and difficult breathing," Thompson said. "Respiratory disease in poultry is also a sign of avian influenza, which is a prevailing issue in the U.S. It is strongly recommended that poultry with respiratory signs be tested for avian influenza from a public health standpoint."

## Wildfire research on livestock

According to a Beef Quality Assurance (BQA) publication based on a

study of the California fires, indirect losses were primarily associated with smoke inhalation and included cases of pneumonia and reproductive losses, such as reduced conception, low birthweight, rare abortions, poor weight gain and drops in milk production.

Another consideration, the study said, is the stress from evacuations or confinement following the fire.

The BQA program recommends when monitoring cattle, pay attention to signs of respiratory irritation such as coughing, fast or heavy breathing, and general signs of illness such as droopy ears or discharge from nose or eyes.

Reducing exercise or movement during these periods will help the animals recover more quickly, as wildfire smoke and higher temperatures can

cause increased respiratory rates and the inhalation of more harmful particulates.

Low-stress handling and good stockmanship are more important during times when air quality is poor. Constant and clean water sources for proper hydration are key because they will help the immune system, minimize the effects of heat, and help clear respiratory airways.

## TVMDL provides diagnostic testing

Thompson said TVMDL offers diagnostic testing and can make sampling recommendations, but generally recommends people work with their veterinarians first and foremost.

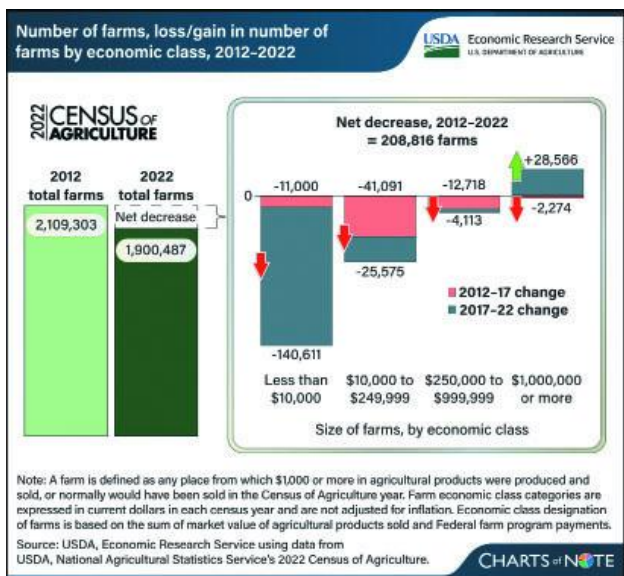
She said sensitivity tests of bacterial cultures can help in antimicrobial se-

lection for all species. As people treat animals for burns, sampling wounds can guide the antimicrobial selection to help prevent secondary infections that burn victims are at risk for.

"For antimicrobials, we always recommend that people work with their veterinarians," Thompson said. "This is especially important for our food animals to maintain a healthy and safe food supply. I have been in contact with most of the veterinarians in the area, and they are up and running."

TVMDL also conducts testing on insured cattle and horses that have died, if a necropsy or post-mortem evaluation needs to be submitted for insurance purposes for an official cause of death. — **Texas A&M AgriLife Extension**

## US farms decreased 10% from 2012-22



In 2022, farms in the U.S. numbered 1,900,487, down from 2,109,303 in 2012, according to data from the 2022 USDA Census of Agriculture released in February 2024. That represented a 10% (208,816 farms) decline from 2012-22.

The Census of Agriculture is a complete count of U.S. farms conducted every 5 years by USDA, National Agricultural Statistics Service. As such, it provides a picture of how differentiated farms, categorized by economic class, changed. In looking at the last two five-year survey periods, the number of farms decreased in all four farm size categories from 2012-17, represented by the red part of bars in the chart.

From 2017-22 (represented by gray part of bars), there was an overall decrease in the number of farms, with a drop in the

smallest three economic class categories and an increase in the number of farms with annual revenue of \$1 million or more.

Farms with annual revenue of less than \$10,000 dropped the largest in number within the decade, declining by 151,611 farms, or 13%. On the other hand, large farms of \$1 million or more in revenue increased by 32%, that is, from 81,660 farms in 2012 to 107,952 farms in 2022.

The number of farms with \$10,000-249,999 in revenue declined by 66,666 (a 9% decrease) from 2012-22, and farms with revenue of \$250,000-999,999 declined by 16,831 (a 10% decrease).

To explore the 2022 Census of Agriculture, see the Census of Agriculture website, [www.nass.usda.gov/AgCensus](http://www.nass.usda.gov/AgCensus). — **USDA Economic Research Service**

Orion Beef Group

# Ludvigson

Stock Farms

Reputation Red Angus and Hybrids

## Spring Herdbuilder Bull Sale

# April 13, 2024

175 Red Angus and Red SimAngus Bulls Sell!

Diamond Y Development Center • Park City, Montana • 1:00 PM MST



**Lot 3 • 3811L • #4745027 • 1/19/23**  
**ENERGIZE X LET'S ROLL X PREMIER**  
 128PROS, 57HB, 16CED, -3.3BW, 69WW, 115YW,  
 29MILK, 16HPG, 8CEM, 14ST, 0.71MB, 0.32RE,  
 \$12,290\$P, \$43\$R, 1.08FERT  
*Deep Soggy Made Prospect!*



**Lot 6 • 3839L • #4786250 • 1/20/23**  
**PRIME PLUS X MERLIN X REDEMPTION**  
 134PROS, 37HB, 9CED, -1.0BW, 92WW, 154YW,  
 33MILK, 5CEM, 12ST, 0.99MB, 0.37RE,  
 \$20,012\$P, \$51\$R, 2.13FERT  
*All kinds of Growth and Carcass!*



**Lot 45 • 3545L • #4763433 • 2/5/23**  
**BONA FIDE X COMMANDER X TYSON**  
 113PROS, 53HB, 17CED, -4.5BW, 86WW, 138YW,  
 27MILK, 8HPG, 11CEM, 15ST, 0.84MB, 0.12RE,  
 \$23,650\$P, \$129\$R, 2.29FERT  
*Absolutely one of the best Bona Fide's!*



**Lot 35 • 3540L • #4763427 • 1/25/23**  
**PRIME TIME X INDEPENDENCE X TEN X**  
 133PROS, 38HB, 18CED, -4.1BW, 79WW, 142YW,  
 26MILK, 16HPG, 10CEM, 10ST, 0.93MB, 0.30RE,  
 \$25,521\$P, \$105\$R, 2.34FERT  
*Big time spread and carcass bull!*



**Lot 25 • 3007L • #4764745 • 1/22/23**  
**CALL OF DUTY X RANCHER X GOLD MINE**  
 138PROS, 56HB, 14CED, -2.2BW, 76WW, 131YW,  
 26MILK, 17HPG, 8CEM, 13ST, 0.87MB, 0.20RE,  
 \$23,834\$P, \$96\$R, 2.67FERT  
*Solid made and gold platinum!*



**Lot 86 • 3613L • #4778053 • 2/11/23**  
**BONA FIDE X DOMAIN X PREMIER**  
 136PROS, 66HB, 18CED, -4.1BW, 69WW, 112YW,  
 29MILK, 10HPG, 9CEM, 18ST, 0.90MB, 0.20RE,  
 \$25,090\$P, \$127\$R, 2.24  
*Could be the "sleeper" in the offering!*



**Lot 14 • 3008L • #4764747 • 1/24/23**  
**CALL OF DUTY X GENUINE X SURE SHOT**  
 126PROS, 53HB, 14CED, -1.9BW, 70WW, 120YW,  
 26MILK, 11HPG, 9CEM, 15ST, 0.81MB, 0.17RE,  
 \$23,590\$P, \$88\$R, 2.25FERT  
*Great balance in this herd bull!*



**Lot 81 • 3712L • #4870892 • 1/29/23**  
**IDENTITY X PHENOMENAL X PASSWORD**  
 132PROS, 72HB, 17CED, -5.2BW, 80WW, 129YW,  
 33MILK, 15HPG, 11CEM, 14ST, 0.64MB, 0.05RE,  
 \$24,494\$P, \$116\$R, 2.67FERT  
*"Identify" this Maternal bull!*



**Lot 83 • 3557L • #4780089 • 3/2/23**  
**EZ-FACTOR X MERLIN X PLEDGE**  
 86PROS, 35HB, 16CED, -4.6BW, 72WW, 114YW,  
 29MILK, 13HPG, 8CEM, 12ST, 0.73MB, 0.20RE,  
 \$24,283\$P, \$153\$R, 2.76FERT  
*Put your Ranch in the Profit!*

[www.ludvigsonstockfarms.com](http://www.ludvigsonstockfarms.com)



Ryan Ludvigson  
515-450-3124  
rl\_ludvigson@hotmail.com

This sale will be broadcast live on the internet.



**DVAuction**  
Broadcasting Real-Time Auctions  
Real time bidding & proxy bidding available.



**SUPERIOR**  
Livestock Auction

# A 'smart' examination to improve livestock management efficiency

A Texas A&M AgriLife animal nutritionist believes precision livestock management—utilizing an extra set of eyes and ears and a little artificial intelligence—can go a long way toward making today's livestock operations more efficient.

Luis Tedeschi, Ph.D., Texas A&M AgriLife Research Fellow and Chancellor EDGES Fellow in the Texas A&M College of Agriculture and Life Sciences Department of Animal Science, is looking for cost-effective and noninvasive methods of monitoring feeding behaviors in livestock operations that producers can adapt to improve their bottom line—all through alerts on a cell phone or computer.

Texas has about 3 million cattle in feedlots and another 10 million cows, heifers, steers, bulls and calves in different feeding situations annually.

Tedeschi said if the manag-

ers of these livestock use modern technological advances or "smart" practices, then the industry can better understand what is happening at the feed bunk and in the pens to make management decisions accordingly.

## Research goals

Over the next three years, he will create and utilize a precision livestock farming facility at Texas A&M to determine where some of the most significant changes can be made. His research is funded by a USDA National Institute of Food and Agriculture grant: Harnessing Precision Livestock Farming to Support Smart Agriculture for Sustainable Beef Cattle Production.

Tedeschi said his goals with this project are to:

- Make artificial intelligence an invaluable and accessible tool for producers.

- Make production sustainable from an economic, social and environmental perspective.

- Ensure the producers are on top of the cutting-edge and innovative advancements they can utilize to improve their production.

- Deliver services leveraging cutting-edge research, sophisticated data analysis and artificial intelligence within a precision livestock farming data framework. This could create opportunities for others to use the technology and create their own business to assist producers.

The project falls under the Research Facilities Act Program approved by Congress in 2023 and will include modifications at the department's Animal Nutritional and Physiology Center. For the next three years, the team will collect data after setting up all the equipment and measuring the

system's precision and accuracy.

The Texas A&M AgriLife team from the Department of Animal Science includes Tedeschi, his doctoral student Egleu Mendes; Karun Kaniyammattam, Ph.D., an AgriLife Research quantitative animal performance scientist and assistant professor; and Gordon Carstens, Ph.D., an animal nutrition professor. They are teaming up with the Texas A&M Institute of Data Science, which includes Nick Duffield, director; Jian Tao, assistant director for project development; and Yalong Pi, an associate research scientist.

## Can technology help pen riders?

Feed efficiency is a prerequisite to achieving sustainable livestock intensification, Tedeschi said.

"Precision livestock farming is all about getting to know your animals, their needs and what value you can give them," Tedeschi said. "We strive to match the animal's needs to the level of management we are providing and then align that with the kind of performance we are expecting from that animal."

The project's ultimate goal is to integrate data streams related to precision feeding and health monitoring sensors into existing and newly developed decision models to implement real-time management decisions for the live-

stock feeding industry.

Using sensors, cameras and microphones, the team will collect information about a pen of cattle, such as what percent of the time they are walking, eating, playing, grooming, lying down or getting water. Knowing their behavior can help calculate how much feed they eat and at what time of day.

"Once I know what they are doing, I can calculate a more accurate prediction of how much energy those animals need or how much they are expending," Tedeschi said. "I know that if an animal eats too fast and only once per day, that animal will have digestive problems, and management may require judicious use of antibiotics."

Combining recorded sounds with artificial intelligence can help identify the difference between a cough and a clearing of the throat by a single animal, allowing for early identification of respiratory issues. The cameras can also help identify lameness, bloat and disease or even alert the owner if wildlife is causing issues in the pens.

"We can even collect enough information on the animal to determine when it is ready to go to market," Tedeschi said. "You can determine how many animals in a particular pen are ready to go and when to sell them for the maximum profit. Is that when 70% of a pen is ready or 82% ready? It allows the owner to look at

the market to determine when it is most profitable."

## Capitalizing on technology

Tedeschi said the project will allow them to show producers what and how to apply precision livestock farming, what benefits they can obtain, and how to do it.

He envisions a new subscription program could be created for use by any producer to get sensors installed. Then a data science center could accept the information, process it using artificial intelligence modeling, and send critical information back to the producer to assist their decision-making process. This would allow small operators who don't really have the opportunity to invest in extensive technology to also improve their efficiency and be more sustainable.

"This research allows us to keep improving the sustainability of beef cattle operations in Texas," Tedeschi said. "The big idea is to provide the information to everyone—we don't control anything, just provide educational recommendations. We can train people to analyze the data. We can identify issues that happen in different regions or under different market conditions."

"But first, we need to show the livestock producers the possibilities and the opportunities." —Texas A&M AgriLife Extension

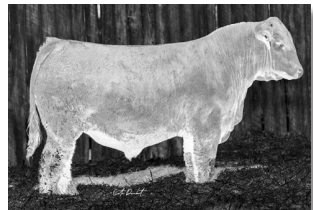
## 80+ Salers & Optimizer Bulls 5 SimAngus Bulls & 6 Elite Heifer Prospects

*Sell* **APRIL 2, 2024**  
1:00 pm MST • Billings Livestock Commission  
Billings, Montana • Auctioneer - Ty Thompson



**DR DERRINGER 4L**

Born: 1/26/23 • Homo Polled • Purebred  
Reg. # 756397 • Tattoo: 64L  
Sire: MJB Derringer 311E • Adj WW: 725  
CED BW WW YW Milk  
+16 -1.4 +54 +75 +24



**DR ENDURO 23L**

Born: 3/2/23 • Polled • 3/4 SA 1/4 AN  
Reg. # 756397 • Tattoo: 64L  
Sire: MAC F1 Enduro 43E • Adj WW: 730  
CED BW WW YW Milk  
+9.8 +2.4 +66 +96 +23



**DR JUNEAU 349L**

Born: 3/23/23 • Homo Polled • 5/8 AN 3/8 SA  
Reg. # 756397 • Tattoo: 64L  
Sire: ECR Juneau 352J • Adj WW: 766  
CED BW WW YW Milk  
+15.4 -3.2 +62 +103 +18



**DR BALBOA 28L**

Born: 3/12/23 • Polled • 1/2 SA 1/2 AN  
Reg. # 756397 • Tattoo: 64L  
Sire: GGT P BK Balboa 240G • Adj WW: 785  
CED BW WW YW Milk  
+7.4 +3 +73 +106 +22



**DR LARAMIE 120L**

Born: 3/17/23 • Polled • 5/8 SA 3/8 AN  
Reg. # 756397 • Tattoo: 64L  
Sire: GGT P BK Balboa 240G • Adj WW: 644  
CED BW WW YW Milk  
+11.4 +0 +57 +88 +17



**DR GENERAL 75L**

Born: 4/9/23 • Homo Polled • 5/8 SA 3/8 AN  
Reg. # 756397 • Tattoo: 64L  
Sire: MJB General 424G • Adj WW: 678  
CED BW WW YW Milk  
+18.9 -4.2 +59 +93 +19

**DVAuction**  
Broadcasting Real-Time Auctions

**DEICHMANN  
LIVESTOCK  
BROKERAGE**

Feeder Cattle Procurement

406-423-5500 • 406-799-5200  
P.O. Box 310 • Hobson, MT 59452

**DOUBET JIM DOUBET FAMILY  
RANCH** Formerly MJB Ranch

1309 State Highway 345 • Ranchester, Wyo.

Request a sale catalog today!

Jim (303) 638-2625 Cody (720) 346-8894

Curtis (303) 681-7086 Justin (720) 302-3291

**SNOWSHOE  
CATTLE COMPANY**  
SNOWSHOECATTLE.COM

**April 1, 2024**

1 pm MDT at Snowshoe Cattle

Arthur, Nebraska

Located between Arthur and Ogallala, NE on Hwy 61

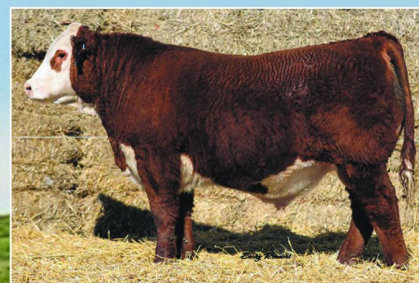
**60 Hereford Bulls**

Yearlings & 18-Month-Olds

**20 Red Angus Yearling Bulls**

Live online bidding on **DVAuction.com**

**DVAuction**



81L Reg# 44507788



15L Reg# 4799048

**Call For A Catalog!**

Bernie & Stacie Buzanowski

308-726-2138 | 406-855-8288

194 Broken Axle Rd Arthur, NE

Rachael Buzanowski, 406-647-5233

Find us on



## SALE REPORTS

### KEARNS CATTLE CO.

#### BULL SALE

**March 7, Rushville, NE**  
**84 Bulls ..... \$7,493**

**Auctioneer: Jered Shipman**

**TOPS:** KCC1 3BCC Next Phase 4L, 3/28/23 by Next Level; to Next Phase Group, Tecumseh, NE, \$95,000. KCC1 Tecumseh 755L, 3/14/23 by STCC Tecumseh 058J; to Dylan Sheffield, Weatherford, TX, \$19,500. KCC1 Long Distance 476L, 1/2/23 by GCC Black Dew 161H; to Mike Moser, LaMoure, ND, \$18,000. KCC1 Trademark 3085L, 2/26/23 by J Trademark 1037; to Bruce Murdock, Hot Springs, SD, \$15,000. — **TY GROSHANS**

### YARDLEY CATTLE CO.

#### BULL SALE

**March 9, Beaver, UT**  
**137 Bulls ..... \$6,434**

**Auctioneer: Steve Bonham**

**TOPS:** Yardley Longitude L282, 2/6/23 by Lover Boy; to Chad Ruda, Ames, NE, \$15,000. Yardley Accomplishment L270, 2/2/23 by SFI Achievement; to Greg Shawcroft, La Jara, CO, \$15,000. Yardley Objective L280, 2/5/23 by SFI Achievement; to Craig Oberg, Ephram, UT, \$12,000. Yardley Standup L289, 2/9/23 by Yardley Standout; to Dick Wheeler, Casper, WY, \$11,000. — **TY GROSHANS**

### SPLIT DIAMOND

#### ANGUS BULL SALE

**March 7, Dillon, MT**  
**111 Yearling**

**bulls ..... \$6,664**

**Auctioneer: Joe Goggins**

**TOPS:** SD Resilient 1791-3063, 1/31/23 by Sitz Resilient 10208; to Jordahl Cattle Co., West Fargo, ND, \$15,500. SD Resilient 3081, 2/1/23 by Sitz Resilient 10208; to Max Yates, Lima, MT, \$13,000. SD Resilient 3025, 1/29/23 by Sitz Resilient 10208; to Max Yates, Lima, MT, \$11,500. SD Logo 3090, 2/1/23 by Sitz Logo 8148; to Carl Schafer, Rock River, WY, \$11,000. — **DEVIN MURNIN**

### GREEN MOUNTAIN

#### ANGUS BULL SALE

**March 8, Billings, MT**  
**118 Yearling**

**bulls ..... \$5,490**

**Auctioneer: Roger Jacobs**

**TOPS:** GMAR Stellar L081, 1/28/23 by Sitz Stellar 726D; to Fortune Triangle S Ranch,

Interior, SD, \$12,000. GMAR Flagstone L335, 2/28/23 by Baldrige Flagstone F411; to Thad Jenni, Lewistown, MT, \$11,500. GMAR Flagstone L013, 1/17/23 by Baldrige Flagstone F411; to Nusbaum Ranch, Pine Bluffs, WY, \$9,500. GMAR Advocate L539, 2/1/23 by MRA Advocate 9035; to Wild Eagle Mountain, Springdale, MT, \$9,500. GMAR Wrangler L531, 1/27/23 by S Wrangler 830; to Mark Holmes, Rosebud, MT, \$9,000. — **DEVIN MURNIN**

### LELAND RED ANGUS/

#### KOESTER RED ANGUS

**March 8, Sidney, MT**

**113 Yearling**

**bulls ..... \$6,170**

**56 Fall bulls ..... 7,228**

**32 Yearling**

**heifers ..... 2,273**

**Auctioneer: Seth Weishaar**

**TOPS:** Leland Stockmarket J524-2148, 4/2/23 by Bieber QCCO Stockmarket J524; to Bob Schettler, Killdeer, ND, \$22,500. Koester Insight 2134, 8/28/22 by Lorenzen Insight 9917; to Huber EY Red Angus, Jud, ND, \$18,500. Koester Propel 261, 8/13/22 by BB Propulsion 9096; to Leland Red Angus, Sidney, MT, \$17,000. Koester Warrant 222, 8/9/22 by Lorenzen Warrant 8273; to Leland Red Angus, Sidney, MT, \$17,000. Koester Insight 288, 8/14/22 by Lorenzen Insight 9917; to Shaw Ranch, Joes, CO, \$17,000. — **DEVIN MURNIN**

### HOLDEN HEREFORDS

#### PRODUCTION SALE

**March 11, Valier, MT**

**111 Yearling**

**bulls ..... \$14,112**

**33 Fall yearling**

**bulls ..... 10,136**

**144 Total bulls .... 13,201**

**3 Donor cows ..... 10,167**

**29 Registered yearling**

**heifers ..... 7,560**

**19 Black baldy open**

**heifers ..... 2,094**

**Auctioneer: Joe Goggins**

**TOPS—Bulls:** HH Advance 3027L, 1/4/23 by HH Advance 0159H; to Cooper Hereford Ranch, Willow Creek, MT, \$90,000. HH Advance 3044L, 1/7/23 by HH Advance 3044L; to Coates Ranch, Mertzon, TX, \$80,000. HH Advance 3107L, 1/13/23 by CL1 Domino 001H; to Churchill Cattle Co., Manhattan, MT, \$70,000. HH Advance 3096L, 1/12/23 by CL1 Domino 8232F; to DD Investments, San Marcos, CA,

\$67,500. HH Advance 3007L, 1/1/23 by HH Advance 001H; to Baumgarten Herefords, Belfield, ND, \$60,000. HH Advance 3184L, 1/24/23 by HH Advance 0159H; to EF1 Cattle Co., Carpio, ND, \$60,000. **Females:** HH Miss Advance 3029L, 1/4/23 by HH Advance 0159H; to EF1 Cattle Co., Carpio, ND, \$46,000. HH Miss Advance 3053L, 1/8/23 by CL1 Domino 115J; to Steve Bodner, Raynesford, MT, \$30,000. — **DEVIN MURNIN**

### PINE COULEE BULLS

**March 11, Hardin, MT**

**38 Older bulls ... \$9,256**

**117 Yearling bulls ... 7,035**

**Auctioneer: Ty**

**Thompson**

**TOPS:** Pine Coulee N Lights 151, 1/6/2023 by Shipwheel Northern Lights; to Duff Cattle Co., Hobart, OK, \$23,000. Pine Coulee Juneau K569, 6/26/22 by OCC Juneau 807J; to Koupal Angus, Dante, SD, \$20,000. Pine Coulee Bravo K592, 6/7/22 by Coleman Bravo 6313; to Cross W Livestock, Ekalaka, MT, \$19,500. Pine Coulee Rainfall K583, 6/10/22 by SAV Rainfall

6846; to Sadler Ranches, Perkins, OK, \$17,000. Pine Coulee Real Deal K575, 6/5/22 by Duff Real Deal 19115; to JR Ranch, Othello, WA, \$17,000. — **DEVIN MURNIN**

### COOPER HEREFORDS

#### PRODUCTION SALE

**March 12, Willow Creek, MT**

**89 Yearling**

**bulls ..... \$11,980**

**30 Yearling**

**heifers ..... 8,150**

**Auctioneer: Joe**

**Goggins**

**TOPS—Bulls:** CL1 Domino 394L, 1/12/23 by HH Advance 7156E; to Stroh Hereford Ranch, Killdeer, ND, \$62,500. CL1 Domino 3142L, 1/16/23 by CL1 Domino 1176J; to Fawcett's Elm Creek Ranch, Ree Heights, SD, \$40,000. CL1 Domino 3126L, 1/15/23 by CL1 Domino 1176J; to Van Newkirk Herefords, Oshkosh, NE, \$40,000. **Bred cows:** CL1 Dominette 719E, 1/8/17 by CL1 Domino 215Z; to Churchill Cattle Co., MT, Kennedy Hoffman, Thedford, NE, and Stelpflug Ranch, Glen Rock, WY, \$25,000. CL1 Domino 3113L, 1/14/23 by CL1 Domino

1176J; to Carmichael Herefords, Meadow, SD, \$24,000. CL1 Domino 3249L, 2/5/23 by CL1 Domino 1195J; to Indian Mound Ranch, Canadian, TX, \$22,000. **Heifers:** CL1 Dominette 379L, 1/11/23 by CL1 Domino 1176J; to L Bar W Cattle Co., Absarokee, MT, \$28,000. CL1 Dominette 313L, 1/2/23 by CL1 Domino 0186H; to L Bar W Cattle Co., Absarokee, MT, \$20,000. CL1 Dominette 342L, 1/8/23 by CL1 Domino 0186H; to L Bar W Cattle Co., Absarokee, MT, and EF1 Cattle Co., Carpio, ND, \$20,000. — **DEVIN MURNIN**

### VELTKAMP ANGUS

#### BULL SALE

**March 12, Amsterdam, MT**

**82 Yearling**

**bulls ..... \$5,371**

**Auctioneer: Kyle Shobe**

**TOPS:** VA Magnitude 3099,

1/20/23 by Mead Magnitude; to Castle Rock Ranch, Phillipsburg, MT, \$7,750. VA Virtue 3138, 1/25/23 by Sitz Virtue 11710; to Castle Rock Ranch, Phillipsburg, MT, \$7,750. VA Virtue 3183, 1/31/23 by Sitz Virtue 11710; to McQuery Ranch, Deer Lodge, MT, \$7,750. VA Patriarch 3015,

1/8/23 by Tehama Patriarch F028; to Wood Ranch, Melrose, MT, \$7,750. — **DEVIN MURNIN**

### SITZ ANGUS BULL SALE

**March 13, Dillon, MT**

**6 Herd bulls .... \$62,167**

**268 Yearling**

**bulls ..... 9,965**

**313 Commercial open**

**heifers ..... 2,243**

**Auctioneers: Joe**

**Goggins and Greg**

**Goggins**

**TOPS:** Sitz Eternity 739L, 1/16/23 by LAR Man in Black; to ST Genetics, Navasota, TX, \$220,000. Sitz Reality 491L, 2/12/23 by Woodhill Reality; to Bear Mountain Angus Ranch, Palisades, NE, \$46,000. Sitz Accomplishment 611L, 1/27/23 by Sitz Accomplishment 720F; to Shufelberger Ranch, Redding, CA, \$29,000. Sitz Intellect 687L, 1/21/23 by BAR Dynamic; to Palmer Angus, Montgomery, TX, \$27,500. Sitz Man in Black 470L, 2/14/23 by LAR Man in Black; to Lazy S&K, Lehi, UT, \$25,500. Sitz Incentive 680L, 1/21/23 by Sitz Incentive 704H; to Edgar Bros Angus, Rockham, SD, \$25,000. — **DEVIN MURNIN**

## Industry leading genetics and the highest quality Red Angus, with 79 years of Satisfied Customers

Beckton has long been the premier breeder of Red Angus cattle which combine calving ease, maternal traits, and rapid growth to yearling age, for maximum overall profitability to commercial cow-calf cattlemen. Beckton's balanced genetics and emphasis on the maternal traits, have made them the leading choice for commercial replacement females and for building a productive cow herd. And the lower birth weights make them a first choice for breeding heifers.

Ever since the original Red Angus Herd Builder Index was created, more than 80% of the highest ranking sires for overall profitability are Beckton sires or descended from Beckton sires.

Please join us at our **79th Anniversary Sale**  
 Selling 300 Red Angus - 250 Bulls and 50 Heifers

**Tuesday, April 9, 2024**

1:00 pm at our ranch 10 miles west of Sheridan, Wyoming



## VIDEO AUCTION

**Superior Livestock Auction**  
**March 7, Hudson, Oaks, TX**

Superior Livestock Auction hosted their video auction live on March 7 from the Superior Livestock Auction Studio in Hudson Oaks, TX. Cattle producers sold 44,973 head of calves, yearlings and bred stock, totaling 369 lots from 26 states for this offering. Strong buyer participation from hundreds of bidders throughout the auction resulted in 119 different successful buyers. Cattle were sold on contract to deliver immediately through November 2024.

Regions 3/4/5/6 feeder steers were fully steady, with select consignments of leading-edge genetics leading the market at \$4-7 higher. After a rough winter across the Midwest, it was evident that feeders in that re-

gion were selective on quality. Feeder heifers from the same regions also saw a particular buyer base with prices \$4-10 higher on quality and deferred deliveries, with most consignments holding a steady trend. Regions 1 and 2 feeder steers and heifers were in light supply but were fully steady with higher quality at \$3-6 higher. Regions 1 and 2 weaned calves were also in light supply; however, \$10-12 premiums were witnessed on calves in dry winter conditions. Beef-dairy crosses were in strong demand at steady levels with the last test. Regions 3/4/5/6 weaned calves saw a very strong demand again on grazing condition calves over 500 pounds up to 700 lbs. at \$8-12 higher. Strong demand for replacement open heifers and first-calf heifer pairs.



**1 Beckton**  
**Red Angus**  
 Foundation Herd of the Red Angus Breed

Call, write or email for a catalog

[www.becktonredangus.com](http://www.becktonredangus.com)

[becktonwyo@gmail.com](mailto:becktonwyo@gmail.com)

37 Beckton Drive • Sheridan, WY 82801

307-674-6095 • 307-674-8162 - Evenings

Fax: 307-672-7281

Cam and Trish Forbes

# MARKET NEWS

## MARKET SITUATION REPORT

WLJ compiles its market reports, ODJ stories and statistics from USDA and independent marketing organizations.

MARKET AT A GLANCE	This Week: 3/14/2024	Week Ago	Year Ago
Choice Fed Steers	184.85 ▲	182.38	164.08
CME Feeder Index	248.46 ▲	248.07	188.71
Boxed Beef Average	310.78 ▲	306.61	283.95
Average Dressed Steers	N/A ▲	N/A	263.77
Live Slaughter Weight*	1,374 ▼	1,386	1,378
Weekly Slaughter**	583,000 ▼	599,000	634,000
Weekly Beef Production***	484.1 ▼	496.9	522.1
Hide/Offal Value	11.81 ▲	11.40	13.9
Corn Price	4.27 ▲	4.26	6.33

\*Average weight for previous week. \*\*Total slaughter for previous week. \*\*\*Estimated year-to-date figure in million pounds for previous week.

BEEF REPORT: Weekly Composite Boxed Beef											
WEEK ENDING	COMPREHENSIVE Loads/Price		PRIME Loads/Price		BRANDED Loads/Price		CHOICE Loads/Price		SELECT Loads/Price		UNGRADED Loads/Price
March 8	6,165	303.85	205	325.88	1,233	308.28	1,789	302.92	702	293.45	2,237 275.98
March 1	6,276	300.66	209	322.37	1,191	304.49	1,925	299.07	624	288.67	2,327 272.64
February 23	6,358	296.36	227	320.47	1,269	298.49	1,921	294.51	603	284.77	2,338 267.45
February 16	6,197	294.37	217	319.68	1,254	297.33	1,841	293.13	616	283.67	2,268 266.22

Cutouts						FED BOXED BEEF				
DATE	CHOICE	SELECT	COW BEEF CUTOUT		50% LEAN	90% LEAN				
Mar 14	310.78	301.69	251.92		108.44	324.76				
Mar 13	309.82	301.04	249.43		103.05	321.69				
Mar 12	310.59	299.60	248.14		102.67	325.62				
Mar 11	308.88	298.88	250.23		102.74	0.00				
Mar 8	307.04	297.43	249.16		N/A	323.80				

CATTLE FUTURES: CME Live Cattle							
	3/8	3/11	3/12	3/13	3/14	High*	Low*
Apr.	18760	18760	18825	18993	18695	19633	15310
Jun.	18343	18303	18395	18605	18338	19975	16853
Aug.	18225	18205	18280	18438	18210	18438	16668
Oct.	18555	18523	18588	18713	18515	18713	17005

CATTLE FUTURES: CME Feeder Cattle							
	3/8	3/11	3/12	3/13	3/14	High*	Low*
Mar.	24920	24825	24898	25028	24748	26833	21280
Apr.	25410	25310	25413	25585	25118	25723	21608
May	25675	25538	25670	25860	25483	26208	21920
Aug.	26835	26728	26845	27035	26663	27095	22268

\*High and low figures are for the life of the contract.

FED CATTLE TRADE			
Head Count	Avg. Weight	Avg. Price	
<b>WEEKLY WEIGHTED AVERAGES</b>			
Live FOB Steer	305	1,472	184.85
Live FOB Heifer	1,166	1,193	184.90
Dressed Del Steer	N/A	N/A	N/A
Dressed Del Heifer	N/A	N/A	N/A
<b>SAME PERIOD LAST WEEK</b>			
Live FOB Steer	1,596	1,539	182.38
Live FOB Heifer	153	1,400	183.00
Dressed Del Steer	N/A	N/A	N/A
Dressed Del Heifer	N/A	N/A	N/A
<b>SAME PERIOD LAST YEAR</b>			
Live FOB Steer	21,285	1,464	164.08
Live FOB Heifer	11,212	1,340	163.99
Dressed Del Steer	9,830	941	263.77
Dressed Del Heifer	2,461	839	263.89

NATIONAL WEEKLY FED BEEF SLAUGHTER VOLUME: MARCH 10, 2024		
	Domestic	Imported
Forward Contract	23,456	3,110
Formula	260,401	6,647
Negotiated Cash	29,292	181
Negotiated Grid	35,724	1,472
Packer Owned	10,346	N/A
<b>Total</b>	<b>399,219</b>	<b>11,410</b>

SLAUGHTER FORWARD CONTRACTS		FORWARD BEEF SALES	
Delivery Month	Neg. Sales 0-21 days	Neg. Sales 21+ days	Formula sales
Mar. '24	131,512	681	3,712
Apr. '24	191,616	139	5,573
May '24	103,268	125	
Jun. '24	89,301		
Jul. '24	73,283		

CANADIAN LIVESTOCK PRICES & FEDERAL INSPECTED SLAUGHTER FIGURES			
Alberta Direct Sales (4% shrink)	Price	Weekly Change	
Slaughter Steers, mostly Choice & Select 1-3, 1300-1500 lbs	171.89	N/A	
Slaughter Heifers, mostly Choice & Select 1-3, 1200-1400 lbs	172.37	+11.89	
<b>Ontario Auctions</b>			
Slaughter Steers, mostly Choice & Select 1-3, 1300-1500 lbs	176.11	-1.25	
Slaughter Heifers, mostly Choice & Select 1-3, 1200-1400 lbs	174.64	-1.24	
Slaughter Cows, Cutter and Utility 1-3, 1100-1400 lbs	103.19	+0.2	

\*Price comparison from one week ago.

Average feeder cattle prices (CND) for week ending Friday, March 1, 2024				
Steers:	Alberta	Saskatchewan	Ontario	
501-600 lbs	322.88	314.63	293.74	
601-700 lbs	291.43	293.75	269.85	
701-800 lbs	259.77	N/A	247.49	
801-900 lbs	236.08	237.48	242.02	
<b>Heifers:</b>				
401-500 lbs	289.04	298.91	247.55	
501-600 lbs	281.91	273.12	246.76	
601-700 lbs	259.42	248.94	228.25	
701-800 lbs	234.89	229.00	211.14	

USDA MEXICO TO U.S. WEEKLY LIVESTOCK IMPORTS				
Feeder cattle imports weekly and yearly volume.				
Species	Current Week	Previous Week	Current Year-to-date	Previous Year-to-date
Feeder Steers	31,842	22,324	247,918	235,497

USDA WEEKLY IMPORTED FEEDER CATTLE			
March 14, 2024			
Mexico to United States Feeder Cattle Import Summary			
Receipts EST: 9,000	Week Ago EST: 9,350	Year Ago Act: 20,643	
<b>Douglas, AZ</b>		<b>Columbus, NM</b>	
Compared to Tuesday, steer calves and yearlings sold steady. Heifers steady. Trade active, demand good. Supply consisted of steers and spayed heifers weighing 300-600 lbs.		Compared to Tuesday, steer calves and yearlings sold steady. Heifers steady to 5.00 lower. Trade active, demand good. Supply consisted of steers and spayed heifers weighing 300-600 lbs.	
<b>Feeder heifers: Medium and large 1&amp;2</b>		<b>Feeder heifers: Medium and large 1&amp;2</b>	
300-400 lbs	260-270	300-400 lbs	262-272
400-500 lbs	250-260	400-500 lbs	252-262
500-600 lbs	240-250	500-600 lbs	236-246
<b>Feeder steers: Medium and large 1&amp;2</b>		<b>Feeder steers: Medium and large 1&amp;2</b>	
300-400 lbs	325-335	300-400 lbs	326-336
400-500 lbs	305-315	400-500 lbs	306-316
500-600 lbs	280-290	500-600 lbs	281-291

(slide 10 cents on steers and heifers basis 300 lbs. All sales fob port of entry.)

Selected Auction Week Ending March 14, 2024										Feeder prices for steers & heifers reflect medium and large 1 cattle, unless otherwise noted; * Indicates medium and large 1-2	
DATE	MARKET	200-300 lb.	300-400 lb.	400-500 lb.	500-600 lb.	600-700 lb.	700-800 lb.	800 lb. -up	SLAUGHTER COWS	PAIRS	NORTHWEST
									SLAUGHTER BULLS	REPLACEMENTS	
March 8	Blackfoot, ID	N/A		250-295	250-314	220-286	210-270		95-18		
March 7	Burley, ID	348		362.50	333	279	229	128-151	85.50-139.50	134-148	
No report available											
March 9	Eugene, OR	869		260-358	255-317.50	240-265	203-234		95-114	2,250-2,550	
March 11	Madras, OR	78		230-299	220-283	200-256	174-202	170-186	100-125	850-1,650	
March 6	Vale, OR	212					233-251		93-119	2,100-2,900	
March 11	Davenport, WA	112	240	220-285	205-255	167.50-222.50	228	137.50-205	72-171	2,000	
March 7	Toppenish, WA	1,320				301*	254*	148	80-124.50	1,500-2,250	
No report available											
March 7	Orland, CA	385	300-415	280-365	250-288	240-289		227	105-131	110-131	
March 13	Escalon, CA	N/A	280-400	260-352	230-302	220-272			75-109	90-110	
March 4	Famoso, CA	251	225-310	230-310	230-290	230-270	185-220	150-175	85-125	100-120	
March 13	Galt, CA	906	330-420	275-407	270-350	230-270	200-248		80-130	100-144	
No report available											
March 5	Salina, UT	724	300-375	305-405	285-357.50	225-325	232-305	210-262.50	175-238	98-130	
			275-350	230-322.50	215-315	200-285	189-233	116-215	120-162.50		
March 11	Iowa	9,734	425	353-415	315-390	290-352	269-323.50	246.75-285	216.50-256.50	100-129	
March 12	Miles City, MT	855		302.50-370	280-350	232-320	235.50-281	214-255.50	206-232	106-161	
March 13	Bassett, NE	3,455			386-399	320.50-367.50	284-318	265-288.75	216.50-262	125-166	1,800-1,950
March 9	Ericson, NE	2,420			318-326.50	290-322	262-291.50	233.50-273.50	210-232		
March 12	Imperial, NE	1,703			372.50	365-392.50	321-359	248-278	231-264.50		
March 6	Kearney, NE	2,300			340-349	337.50-340	281-286	249-272	233-260.50	1,800-2,550	
March 8	Lexington, NE	1,613			351-370	315.50-329.50	272-310	244.25-263.50	230.25-253		
March 13	Torrington, WY	2,675			326	315.50-329.50	272-310	244.25-263.50	220-221		
March 7	Willcox, AZ	784	325-392.50	344-378	291-346	291-320	251-275		80-130	1,325-1,425	
March 11	Colorado	9,342	308-335	314-329.50	276-320	249-276	223-243		105-144	1,150-1,525	
March 6	La Junta, CO	2,454			357.50-417	324-384	290-357.50	260-315	176-247	76-155	
March 13	Dodge City, KS	4,018			322-399	291-333	259-318	229-278	222-252	210-243	
March 7	Salina, KS	2,888			385-417	340-390	310-352	278-301	247-278	224-238	1,135-2,300
March 13	Clovis, NM	1,938			322-361	316-332.50	257-303	229-276	226-246	210-211	
No report available											
March 13	El Reno, OK	9,127									
March 13	McAlester, OK	740									
March 12	Oklahoma City, OK	6,503									
March 8	Cuero, TX	937									
March 7	Dalhart, TX	3,205									
March 7	Tulia, TX	2,446									
March 8	Alabama	6,710									
March 11	Lexington, KY	870									
March 11	Joplin, MO	8,011									
March 11	Tennessee	7,800									
March 11	Virginia	4,181									

CANADA											
March 13	Lethbridge, Alberta	2,386									
			415-460	425-486	410-430	317-442	392-427	347-393	308-353	137-171	3,450-3,700
						387-419	340-384	317-242	287-380	163-178	2,850-3,700

**Find out how YOUR AUCTION MARKET can become a PREFERRED WLJ partner!**

At no cost to you, we'll send you weekly copies of the *Western Livestock Journal* that you can share with your customers to keep them informed of what's happening in the beef industry. There is no obligation or downside! Contact Hannah at

# Boxed beef prices increase sharply higher

## MARKETS (from page 1)

Slaughter through Thursday was estimated at 473,000 head, 11,000 head lower than a week earlier. The projected total slaughter for the week prior was 583,000 head, 48,000 head lower than last year.

"This week's slaughter could fall between 570k and 580k head, down from 628k a year ago," Cassie Fish, market analyst, wrote in The Beef on Thursday. "Next week could be the same, but in 2023, the corresponding kill was 645k."

Actual slaughter for the week ending March 2 was 594,236 head. The average dressed steer weight was 919 lbs., up 5 lbs. from the prior week.

Fish also reported the average steer weight ties 2022 for the highest in history for the week ended March 2. She continued that heifer carcass weights were 12 lbs. higher than the prior week and 17 lbs. over a year ago.

Boxed beef prices climbed sharply, with the Choice cutout up \$4.17 to \$310.78 and the Select cutout up \$5.43 to \$301.69.

## Feeder cattle

Feeder cattle were looking for direction from live cattle

and followed the week lower. The March contract was down \$3.55 to \$247.47, and the April contract lost \$5.13 to \$251.17. The CME Feeder Cattle Index was up 39 cents to \$248.46.

Corn futures were lower, with the March contract losing 4 cents to \$4.22 and the May contract down a nickel to \$4.33.

**Colorado:** Winter Livestock in La Junta sold 7,102 head on Tuesday. Compared to the previous auction, feeder steers sold mostly \$2-7 higher across all weight classes. Feeder heifers sold \$1-9 higher, with instances of sharply higher across all weight classes. Benchmark steers averaging 778 lbs. sold between \$234.50-243, averaging \$239.37.

**Kansas:** Winter Livestock in Dodge City sold 3,804 head on Wednesday. Compared to the last auction, feeder steers and heifers 475-975 lbs. sold steady to \$3 lower. However, reputation cattle sold steady to \$3 higher. Benchmark

steers averaging 777 lbs. sold between \$235-250.50, averaging \$248.28.

**Missouri:** Joplin Regional Stockyards in Carthage sold 7,500 head on Monday. Compared to a week earlier, feeder steers and heifers sold steady to \$5 higher at the mid-session. Benchmark steers averaging 767 lbs. sold from \$245-264, averaging \$249.70.

**Nebraska:** Bassett Livestock in Bassett sold 3,455 head on Wednesday. There was not a recent auction for an accurate comparison. Benchmark steers averaging 727 lbs. sold between \$273-288.75, averaging \$278.90.

**Oklahoma:** Oklahoma National Stockyards in Oklahoma City sold 6,750 head on Monday. Compared to a week earlier, feeder steers sold mostly steady, with instances of \$5 higher on those over 900 lbs. Feeder heifers sold \$3-8 higher. Stocker steers and steer calves sold steady to \$3 higher. Heifer calves sold \$2-5 higher.

**South Dakota:** Sioux Falls

Regional Cattle in Worthing sold 3,542 head on Monday. Compared to the last auction, steers 600-700 lbs. sold most-

ly steady to \$2 higher and 750-950 lbs. traded mostly \$4-6 higher. Heifers 400-700 lbs. sold mostly \$3-6 higher,

750-800 lbs. traded \$1 higher and 850 lbs. were \$6 higher. — Charles Wallace, WLJ contributing editor



## COMING EVENTS

(Send calendar of events information to [editorial@wlj.net](mailto:editorial@wlj.net))  
**March 24** - Join the California Cattlemen's Association at the

43rd Steak and Eggs Legislative and Regulatory Breakfast + Lobby Day. Details: [tinyurl.com/2s76htyd](http://tinyurl.com/2s76htyd).

**OGALLALA**

SANDHILL & WESTERN NEBRASKA CATTLE

OGALLALA, NE ~ 308-284-2071

## Special Stock Cow & 1st Calf Heifer Sale w/ Regular Sale

**WEDNESDAY, MARCH 20, 2024**

**MARTY & RENEE WHEELER (120)** - Ang 1st Clf heifers, 60 are AI bred July 2nd to Spring Cove Crossbow, due date of April 10th, 60 are exp. to Black bull for 30 days, due April 10th for 30 days.

**SPECTACLE ANGUS / KENNY STAUFFER (28)** - Reg. Ang pairs w/ 1st Calf-4th Calf & Reg. Ang replacement quality heifers, 750-800#, **Complete Dispersion** of Kenny's registered cow herd, full pedigree and EPD info will be available. This will be a really gentle, stout set of cows, on a full vac and mineral program. Calves have been vaccinated at birth with Alpha 7.

**LARGES FARMS INC. (15)** - SimAng 1st Calf heifers, bred LBW Ang bulls, calving now for 45 days

**\*Other Consignments Pending\***

120 Ang Stockcows, Solid Mouth-Short Term, Bred to Angus Bulls, Calving now for 50 days.  
100 Ang First Calf Heifers, Calving in April.

**\*Plus Many More Valued Consignments that can be viewed at [www.ogallalalive.com](http://www.ogallalalive.com)\***

Call our office @ 308-284-2071 or visit our website @ [www.ogallalalive.com](http://www.ogallalalive.com) for more information on consignments, market reports and upcoming sales.  
All sales will be broadcast live via the internet on [www.cattleusa.com](http://www.cattleusa.com).  
*Pre-registration for online bidding is required BEFORE sale day, for online bidding is required BEFORE sale day.*

**TURLOCK LIVESTOCK AUCTION YARD**  
The Central California Livestock Marketing Center

## MARK YOUR CALENDARS FOR THESE UPCOMING EVENTS!

# EARLY SPRING SPECIAL FEEDER SALES

**TUESDAY, APR. 9**  
**TUESDAY, APR. 23**

**SALE  
DAY IS  
PAY DAY**

*When marketing your calves at TLAY, don't forget how essential the 2<sup>nd</sup> round of shots is. Make sure to include a modified live vaccination.*

2024 Upcoming **WM** western VIDEO MARKET Sales

Apr 11 Cottonwood, CA	May 2 Harris Ranch - Coalinga, CA	May 23 Cottonwood, CA
--------------------------	---	--------------------------

**Call today to consign your cattle!**

Max Olvera 209-277-2063	John Bourdet 831-801-2343
Steve Faria 209-988-7180	Celeste Settrini 831-320-1527
Justin Ramos 209-844-6372	Matt Miller 209-914-5116
John Luiz 209-480-5101	Brandon Baba 209-480-1267
Jake Bettencourt 209-262-4019	Bud Cozzi 209-652-4480
Travis Johnson 209-996-8645	Eddie Nunes 209-604-6848
Tim Sisil 209-631-6054	

**Online Bidding at [www.LMAAuctions.com](http://www.LMAAuctions.com)**

**209-634-4326 • 209-667-0811 • [WWW.TURLOCKLIVESTOCK.COM](http://WWW.TURLOCKLIVESTOCK.COM)**

# SVR

## Spring Valley Ranch & Cattle

612-747-4400 • [SVR-ANGUS.COM](http://SVR-ANGUS.COM)

# Dispersal

PHASE  
**3**

**The 2022-Born  
Coming-Two-Year-Old Bulls  
and Bred Heifers**

Friday • 1PM (CST)

~~**March 8, 2024**~~

**Selling 70 Bulls and 105 Bred Heifers**

- Postponed -

## New Date - April 5, 2024

At Burwell Livestock Market, Burwell, Nebraska

\*Utilizing Structured Sire Evaluation and Igenity DNA Data Indexes

### The Angus Breed's Foundation Genetics Sell!

For your free reference sale booklet, contact anyone in the office of the Sale Manager, TOM BURKE, KURT SCHAFF, ALEX POPPLEWELL, AMERICAN ANGUS HALL OF FAME, at the WORLD ANGUS HEADQUARTERS, PO Box 660, Smithville, MO 64089-0660. Phone: (816) 532-0811. Fax: (816) 532-0851. E-Mail: [angushall@angushall.com](mailto:angushall@angushall.com)

# CLASSIFIED CORRAL WESTERN LIVESTOCK JOURNAL

WWW.WLJ.NET

303-722-7600

1-303-722-0155

CLASSIFIED@WLJ.NET

## CLASSIFIED ADVERTISING GENERAL INFORMATION

### ADVERTISING RATES

**BY THE WORD:** 90 cents per word for each insertion.  
**MINIMUM WORD RATE:** 17 words or fewer, \$15.30 one time.  
**MAD RATES:** (Bold headline) \$2 more per insertion for your phone number, email and/or website, plus first 2 or 3 words in bold print. (Applies to word ads only)  
**BOXED AND BOLD:** (Boxed with bold text) \$5 more per insertion. (Applies to word ads only)  
**BLIND BOX AD:** We will assign your confidential number and forward replies to you. **Cost is \$12 per 3 issues** for mail and handling service.  
**BOXED DISPLAY ADS:** \$30 per column inch for each insertion.  
**MINIMAL ARTWORK:** No additional charge.  
**BLACK AND WHITE PHOTO:** \$10, LIMIT OF ONE.  
**COLOR PHOTO:** \$35 EACH.  
**DISCOUNTS:** 5% for running your ad 3 to 5 times; 10% for 6 times or more; up to 35% for 52 times.  
**SUGGESTION FOR CORRECT WORD COUNT:** Be sure to include your name, address and phone number in the count, as well as all initials and abbreviations. Hyphenated words count as two.  
**TEARSHEETS:** Available upon request only. Can be faxed or mailed.  
**CONDITIONS**  
**EMPLOYMENT WANTED ADS:** Must be paid in advance.  
**DEADLINE:** Tuesday at 4:30 p.m. MT, the week prior to publication date. Newspaper is published on Mondays.  
**LIABILITY:** Advertiser is liable for content of advertisement and any claims arising therefrom made against the publication.  
**Publisher is not responsible for errors in phoned-in copy.** Publisher reserves the right to refuse any advertising not considered in keeping with the publication standards.  
**COMMISSIONS:** Classified advertising is NOT agency commissionable.

## CLASSIFIED INDEX

1..... Employment Wanted	20H..... Northeast Real Estate For Sale
2..... Help Wanted	20I..... Foreign Real Estate For Sale
3..... Situations Wanted	21..... Real Estate Wanted
4..... Distributors Wanted	22... Real Estate Rent/Lease/Trade
5..... Appraisers	23..... Pasture Available
6..... Auctions	24..... Pasture Wanted
7..... Auctioneers	25..... Mineral Rights
8..... Feedlots	26..... Hay/Feed/Seed
9..... Lost Cattle	27..... Irrigation
10..... Cattle for Sale	28..... Ag/Industrial Supplies
11..... Cattle Wanted	29..... Fencing/Corrals
12..... AI/Semen/Embryos	30..... Equipment For Sale
13..... Brands	31..... Equipment Wanted
14..... Dogs for Sale	32..... Building Materials
15..... Horses/Mules	33..... Trucks/Trailers
16..... Bison/Buffalo	34..... Tractors/Implements
17..... Sheep/Goats/Hogs	35..... Business Opportunity
18..... Livestock Supplies	36..... Loans
19..... Ranch/Livestock Services	37..... Insurance
20..... Real Estate Opportunities	38..... Financial Assistance
20A..... Pacific Real Estate For Sale	39..... Tech/Books/Art/Etc.
20B..... Intermountain Real Estate For Sale	40..... Miscellaneous
20C..... Mountain Real Estate For Sale	41..... Lost/Found
20D..... Southwest Real Estate For Sale	42..... Personal
20E..... Plains Real Estate For Sale	43..... Schools
20F..... Midwest Real Estate For Sale	44..... Auctioneering Schools
20G..... Southeast Real Estate For Sale	

## CLASSIFIED CORRAL

1-800-850-2769 • Fax: 303-722-0155  
www.wlj.net • classified@wlj.net

**DO NOT PHONE IN RESPONSES TO BLIND BOX ADS. ADVERTISERS' NAMES AND LOCATIONS ARE CONFIDENTIAL. INCLUDE THE AD DEPARTMENT NUMBER IN YOUR EMAIL RESPONSE OR ON YOUR ENVELOPE AND YOUR REPLY WILL BE PROMPTLY FORWARDED.**



# 2 FOR 1

 PLACE A CLASSIFIED AD, SEE IT IN PRINT & ONLINE

### CLASSIFIED ADS WORK!

www.wlj.net

Call & schedule your classified ad today!  
800-850-2769  
classified@wlj.net  
303-722-0155 Fax

## Employment Wanted 1

Employment Wanted  
Experienced livestock worker, sale barn, managed sale barn, purchased livestock.  
620-430-6719

## Help Wanted 2

**HERDSMAN GENOA LIVESTOCK**  
Full time position for experienced Herdsman.  
All aspects of ranch operations: Herd management and health, Haying, Irrigation.  
Registered cow/calf operation Western Nevada.  
Housing, salary + bonuses, benefits.  
**For more information: Genoa Livestock.com**

## Cattle For Sale 10

**150 Bulls For Sale**  
Home of 2 Bar Twenty X  
**2 Bar Angus Hereford, Texas**  
806/344-7444  
877/2BAR-ANG  
www.2barangus.com

**PRATT FARMS**  
GRAY BRAHMAN  
**GENTLE AMERICAN BEEF TYPE GRAY BRAHMAN**  
Loren Pratt  
520-709-1554  
44996 W. Papago Rd.  
Maricopa, AZ 85139

**DeBruycker Charolais**  
"Because Pounds Pay"  
Jane.....406-476-3427  
Brett & Kay.....406-590-3214  
Mark & Belva.....406-590-0355  
Joe & Cathy.....406-788-5821  
**DeBruyckerCharolais.com**  
**BULL SALE**  
Saturday, April 6, 2024 • Western Livestock Auction • Great Falls

## Dogs For Sale 14

Blue Red Heeler puppies AKC.  
360 749 6333

FREE Golden Retriever Puppies to Forever Homes!

1 Male, 1 Female. Excellent temperament! House trained with very good trainable natures & perfect for families with children and other pets! I will not re home to just anyone.

PLEASE email me first before text: stephaniechristensen59@gmail.com (312) 932-7651

## Livestock Supplies 18

**POWDER RIVER LIVESTOCK EQUIP.**  
Best prices with delivery available.  
Conlin Supply Co., Inc.  
Oakdale, CA  
Ask for Larry or Albert  
**209/847-8977**

Visit www.wlj.net

## Real Estate Pacific 20A

**KNIFE LAND COMPANY**  
EST 1944  
**Howerton Spring Ranch**  
422± acres with 140± acres in dry pasture, timbered hills, and draws. Fenced and cross fenced, with multiple water sources. Great hunting! **Price Reduced! Now \$2,500,000**  
**Gilbert Grade Farm**  
379± acre dry-land farm with 260± acres cultivated, timber, a pond, spring, 2 outbuildings, and power nearby **Price Reduced! Now \$1,372,500**  
**Buying or Selling? Call today! (208) 345-3163 • knipeland.com**

## Pasture Available 23

Mountain Spring Pasture. For 200 pair. Good water and access. Northeastern California / Lassen County.  
530-294-1203

**BIG HORN COUNTY MONTANA GRAZING OPPORTUNITY.**  
26,000 plus Blocked acres. ADG last 3 years ± 1.5 pounds per day.  
• Huge stockpile 2023 Forage after grazing 1,500 Bred Heifers May through November.  
• 38 Fenced pastures  
• Well watered  
• 700 tons of 2023 Hay on-site  
• 3500 to 4000 feet Elevation at Wyoming State Line  
• Good Access  
• Excellent Corrals  
• Full Care  
**AVAILABLE NOW**  
grazingplus@gmail.com

## Cattle For Sale 10

## Pasture Wanted 24

Pasture wanted for 45 pair. May thru November 2024, in northern California or southern Oregon.  
Call 530-260-1354

## Irrigation 27

**WESTERN POLYPIPE**  
HDPE PIPE for Ranch Water Systems  
Fair Prices - Good Service - Rancher Owned  
DELIVERY THROUGHOUT THE WEST  
**CALL TODAY: 775-657-1815**

**NEED EXTRA INCOME?**  
Advertise a hunting or fishing lease!  
**CALL NOW!**  
800-850-2769

## Real Estate Opportunities 20

**HALL AND HALL**  
SALES | AUCTIONS  
FINANCE | MANAGEMENT  
Dedicated to Land and Landowners Since 1946  
**DAKOTA PARTNERSHIP RANCH**  
FAIRBURN, SOUTH DAKOTA  
Well-blocked 26,276± deeded acre grass ranch south of Rapid City. Quality improvements including an owner's residence and two employee compounds. The ranch is well-sodded and esthetically pleasing with wildlife abound. Stocked with 1,800 bison and fenced into approximately 20 pastures.  
**OFFERED AT \$31,700,000**  
Contact: Mike Fraley | mfraley@hallandhall.com  
WWW.HALLANDHALL.COM | INFO@HALLANDHALL.COM | 307.278.0232

## Real Estate Southwest 20D

**Scott Land Company, LLC**  
RANCH & FARM REAL ESTATE  
We need your listings on any types of ag properties in TX, NM, OK & CO.  
**GREER CO., OK** - Choice 480 ac. tract of choice farmland located just south & east Mangum, OK. Please call for details!  
**KB RANCH** - Kenney Co., TX - KB Ranch is a low fenced 802± acre property that is surrounded by arge ranches. The ranch has abundant whitetail and is also populated with turkey, dove, quail, hogs and varmint species. Axis are in the area and have been occasionally seen. The ranch lies approximately 9 miles south of Bracketville on TX 131 and is accessed by all weather Standart Road.  
**PRICE REDUCED! YESO EAST RANCH** - De Baca Co., NM - Hwy. 60 frontage. 6,307± deeded, 1,556± State Lease and 40± uncontrolled acres. Terrain is gently rolling with good grass and is divided into three pastures. Wildlife includes antelope, some mule deer, quail, etc. The ranch has good improvements (including home) convenient access and has been well managed.  
**www.scottlandcompany.com • 800-933-9698 day/eve**  
Ben G. Scott - Broker • Krystal M. Nelson - NM QB

**World Class Ranches Team**  
**exp REALTY**  
Bob & Sandy Bahe  
Accredited Land Consultants  
Branch Office: 918-426-6006  
Main Office: 888-560-3964 ext.137

### New Listing



**Rouse Road Ranch** 450 acres m/l  
McAlester, OK Combination ranch, 112 acres of pasture, barn, fenced, 8 ponds, county road access, rural water available, Whitetail deer and other wildlife.  
\$1,575,750.00

### New Listing



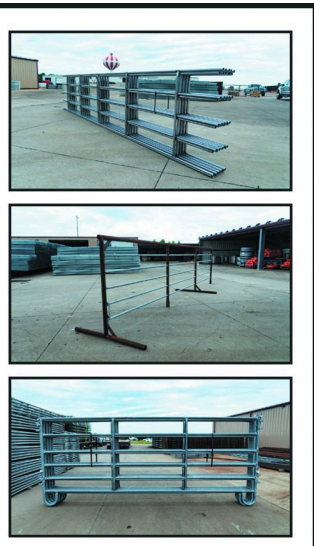
**Escape to Serenity** 2.25 acres m/l  
McAlester, OK 2.25 acre treed lot with updated home, shop, shed, 4 bedroom, 2 bath stone home with lots of natural lighting, Close to shopping, medical, and schools.  
\$252,900.00

To view all properties (Including Pictures, Aerials and Topo Maps) go to:  
**www.WorldClassRanches.com**  
Call Toll Free Today: 1-844-WCR-Land (844-927-5263)

## Fencing/Corrals 29

**DuroTough, LLC**  
**Steel Fence**  
Join our network of dealers and reps!  
- Continuous fence  
- Freestanding Panels  
- Portable Panels and more!  
**Contact us:**  
Gary Strickland | 208.870.4800  
Stuart Shoemaker | 208.899.2358  
Emmett, ID  
beardog7843@icloud.com

## Fencing/Corrals 29



**STAY UP TO DATE**



# The importance of vitamin A for calf health

Vitamin A is critical in reproduction, growth and health in cattle. Though green grass is rich in the precursor to vitamin A, beta carotene, deficiency in vitamin A may be of concern due to recent years of drought.

National recommendations for vitamin A supplementation assume cows have been eating lots of green grass for a significant portion of the year, building stores for critical processes such as vision, helping cows stay healthy while pregnant and general cattle health. It is essential to monitor for signs of vitamin A deficiency as it can be a major factor in the success of your calf crop this year.

Young calves with vitamin A deficiency may display signs ranging from weakness to a dampened immune system, leading to increased susceptibility to disease (especially diarrhea.) Vitamin A is important in epithelial cells, such as those in the eye and those lining the gut. Some signs to look for are:

- Increased illness, including diarrhea and pneumonia.
- Reduced feed intake and growth.
- Rough hair coat.
- Weak and uncoordinated.
- In extreme deficiency, a white film over the eye (xerophthalmia).

Access to colostrum is one of the most important parts of establishing vitamin A status in newborn calves. Did you know newborn calves have virtually no vitamin A in their body? Vitamin A cannot transfer to the calf in utero, but colostrum is rich in vitamin A and will establish vitamin A stores in newborn calves.

Vitamin A stores begin to be moved for colostrum production before calving, so it is important to consider vitamin A supplementation in your cows during late gestation. Stored feedstuffs, like cornstalks and hay, are likely low in vitamin A, so they should be supplemented with

vitamin A to ensure calves obtain adequate vitamin A in the colostrum and milk.

Given the persistent drought in Iowa, current recommendations for vitamin A are likely low and producers may want to target rates closer to 75,000 international units (IU) a day if you think your cows have good stores of vitamin A, or 90,000 IU/day if cows have been fed stored forages and came off droughty pastures last fall.

Remember, vitamin A easily degrades over time, so feeding an old supplement will not provide the vitamin A on the label and may not be enough to support cow and calf health.

In the unfortunate event that calves are stillborn or die, a diagnostic test should be run to understand if vitamin A deficiency is a concern. Also, producers should inform the lab if the calf had colostrum so the appropriate reference ranges can be used in diagnosis.

If a vitamin A deficiency is diagnosed, injectable vitamin A may be an option to increase vitamin A status

rapidly. Injections will not be a long-term fix, and underlying reasons for deficiency should be fixed to maintain

vitamin A status. — **Emma Reints, Iowa State University animal science research graduate assistant**



## SALE CALENDAR

Sale Calendar is a service to our advertisers. There is a minimum advertising requirement to be eligible to be listed in the Sale Calendar. Contact your fieldman for more information or to have your date added to the Sale Calendar. We will only run auction sale dates or private treaty start dates.

### ALL BREEDS

**Apr. 4** — Midland Bull Test, Columbus, MT  
**Apr. 16** — Treasure Bull Test, Great Falls, MT

### ANGUS

**Mar. 18** — Angus in the Basin, Bull Sale, Duchesne, UT  
**Mar. 18** — Herd Builder, Bull Sale, Othello, WA  
**Mar. 18** — Whistling Winds Angus, Bull Sale, Hingham, MT  
**Mar. 19** — Blevins Angus, Bull Sale, Charlo, MT  
**Mar. 19** — ELK Angus, Bull Sale, Buffalo, WY  
**Mar. 20** — Luffin Cattle, Bull Sale, Tendoy, ID  
**Mar. 20** — Wagonhammer Ranches, Bull Sale, Albion, NE  
**Mar. 21** — Carter Cattle, Bull Sale, Pingree, ID  
**Mar. 21** — Oft Angus, Bull Sale, Vale, OR  
**Mar. 21** — Vermilion Ranch, Commercial Female Sale, Billings, MT  
**Mar. 22** — Vermilion Ranch, Bull Sale, Billings, MT  
**Mar. 23** — Currant Creek, Bull Sale, Miles City, MT  
**Mar. 23** — Sinclair Cattle Co., Bull Sale, Buffalo, WY  
**Mar. 24-25** — Leachman Cattle, Bull & Female Sale, Ft. Collins, CO  
**Mar. 26** — Bar JV Angus, Bull Sale, Sidney, MT  
**Mar. 27** — Peterson Grain and Cattle, Bull Sale, Havre, MT  
**Mar. 28** — Gartner-Denowh Angus Ranch, Bull Sale, Sidney, MT  
**Mar. 29** — Silver Bit Angus Ranch, Bull Sale, May, ID  
**Mar. 30** — Basin Bull Fest, Klamath Falls, OR  
**Mar. 30** — Diamond Peak Cattle, Bull Sale, Loma, CO  
**Apr. 1** — FBA Angus Ranch, Production Sale, Havre, MT  
**Apr. 2** — Hinman Angus, Bull Sale, Malta, MT  
**Apr. 4** — Arntzen Angus, Bull Sale, Hilger, MT

**Apr. 6** — Botts Angus, Bull Sale, Huntley, MT

**Apr. 6** — Brooks Chalky Butte, Bull Sale, Bowman, ND

**Apr. 8** — C-Spear Angus, Bull Sale, Billings, MT

**Apr. 9** — Hilltop Angus, Bull Sale, Denton, MT

**Apr. 11** — Jocko Valley Angus, Bull Sale, Missoula, MT

**Apr. 17** — Milk River Genetics, Bull Sale, Chinook, MT

**Apr. 19** — DeGrand Angus, Bull Sale, Baker, MT

**Apr. 19** — Timberline Angus, Bull Sale, Manhattan, MT

### BALANCER

**Apr. 13** — Bar T Bar Ranches, Bull Sale, Winslow, AZ

### CHAROLAIS

**Mar. 20** — Wagonhammer Ranches, Bull Sale, Albion, NE

**Mar. 23** — Valley View Charolais, Bull Sale, Polson, MT

**Mar. 24-25** — Leachman Cattle, Bull & Female Sale, Ft. Collins, CO

**Apr. 5** — Brevig Charolais, Bull Sale, Lewistown, MT

**Apr. 6** — DeBruycker Charolais, Bull Sale, Great Falls, MT

### HEREFORD

**Mar. 21** — Bar Star Cattle, Bull Sale, Musselshell, MT

**Mar. 27** — NJW Herefords, Bull Sale, Sheridan, WY

**Apr. 20** — Stuber Ranch, Bull Sale, Bowman, ND

### RED ANGUS

**Mar. 19** — Green Mountain Red Angus, Bull Sale, Logan, MT

**Mar. 20** — Klompfen Red Angus, Bull Sale, Manhattan, MT

**Mar. 24-25** — Leachman Cattle, Bull & Female Sale, Ft. Collins, CO

**Mar. 25** — Axtell Cattle Co., Production Sale, Sterling, CO

**Mar. 27** — Westphal Red Angus, Bull Sale, Grass Range, MT

**Apr. 4** — McCann Red Angus, Bull Sale, Billings, MT

**Apr. 9** — Beckton Red Angus, Bull Sale, Sheridan, WY

**Apr. 12** — 5L Red Angus, Bull Sale, Sheridan, MT

**Apr. 13** — Ludvigson Stock Farms, Bull Sale, Shepherd, MT

### SALERS

**Apr. 2** — Doubet Ranch, Bull Sale, Billings, MT

### SIMANGUS

**Mar. 30** — Diamond Peak Cattle, Bull Sale, Loma, CO

### SIMMENTAL

**Mar. 29** — Open Gate Simmental, Bull Sale, Augusta, MT

### STABILIZER

**Mar. 24-25** — Leachman Cattle, Bull & Female Sale, Ft. Collins, CO

**Apr. 13** — Bar T Bar Ranches, Bull Sale, Winslow, AZ

### COMMERCIAL

**Apr. 11** — Western Video Market Internet Sale, CA

**Apr. 27** — Visalia Livestock Market, Annual Bred Cow & Pair Sale, Visalia, CA

**May 2** — Western Video Market Internet Sale, CA

**May 23** — Western Video Market Internet Sale, CA

**May 23** — Western Video Market Internet Sale, CA

# Gray's Angus Ranch

A Family Tradition Since 1898

## "Second Century" Performance Bull Sale

### MONDAY, APRIL 8, 2024 - 1 PM MST

AT THE RANCH SOUTHWEST OF HARRISON, NEBRASKA

**Gray's Stellar 113 #20827799**



**Act BW 61  
Adj WW 711**

**CED+10 - BW+0.8 - WW+66 - YW+118**

*Selling* **110 Yearling & 40 Two-Yr-Old Angus Bulls and 20 Open Purebred Angus Heifers**

Sires Represented: Stellar, Accomplishment, Growth Fund, Resilient, Rangefinder, Three Rivers, Rainfall

**Rod & Laura Gray Family / 4281 Henry Road / Harrison, NE 69346**  
Office: 308-668-2525 / Home: 308-668-2520 / grayangus@bbcwb.net

**GRAYSANGUSRANCH.COM** 

# 28<sup>th</sup> Annual Sale

## APRIL 17, 2024 AT 1:00 PM

BEAR PAW LIVESTOCK, CHINOOK, MONTANA  
LUNCH - 11:30



# MILK RIVER ANGUS

*Your Source for Bulls On The Hi-Line*

*The Best of Their Herds!*

♦ **C BAR ANGUS - MALTA, MT** 406-301-0887

♦ **BRYAN PIKE - CLEVELAND, MT** 406-788-5952

♦ **NORTH FORK ANGUS - CHINOOK, MT** 406-357-2410

**REDLAND FOUNDATION 249**

- REDLAND ROSCOE 450
- R44 JET STREAM 0158
- SITZ BARRICADE 632 F
- SITZ RESILIENT 10208

**Sire Groups**

- MONTANA SENSATION 8021
- SITZ LOGO 11390
- TEHAMA TESTAMENT J304
- E7 CORNERSTONE H608
- E7 DEPUTY H261
- IDEAL 0026 RITO OF REN
- NF IDEAL 4223 HF01

- SITZ ACCOMPLISHMENT 720F
- MOHNNEN GUARANTEE 2941
- SHIPWHEEL KEYSTONE 0600
- COLEMAND BRAVO 1106
- SHIPWHEEL RESOURCE 8677

**PROGRESS REPORTS AVAILABLE AT [WWW.MILKRIVERANGUS.COM](http://WWW.MILKRIVERANGUS.COM)**

# HA *Hinman Angus*

We do one thing . . . **Angus!**

**MATERNAL MATERNAL MATERNAL**

The **HA** prefix has been synonymous with high maternal females for decades. We strive for perfection in our cow herd, while also delivering weaning and feedlot performance.

*Every breeding decision is based around building a better cow.*

**Selling 175 Registered Angus Bulls**



\*20805055

CED	+12
BW	+0.4
WW	+76
YW	+137
MILK	+41
MARB	+1.10
RE	+0.84
FAT	+0.027
SM	+69
SW	+81
\$F	+123
\$G	+77
\$B	+200
\$C	+328

Sire Hoffman Thedford MGS TEX Playbook 5437

**Worth The Weight . . .**

**Tuesday** *37th Annual Bull Sale!*  
**April 2**  
**2024**

1:00 pm MDT

At the Ranch 10 miles east of Malta, MT



\*20805051

CED	+6
BW	+3.0
WW	+95
YW	+160
MILK	+23
MARB	+0.94
RE	+0.79
FAT	+0.069
SM	+74
SW	+79
\$F	+131
\$G	+65
\$B	+196
\$C	+328

Sire LAR Man In Black MGS Musgrave Aviator



\*20810918

CED	+2
BW	+2.5
WW	+69
YW	+126
MILK	+23
MARB	+0.56
RE	+0.54
FAT	+0.026
SM	+69
SW	+58
\$F	+99
\$G	+44
\$B	+143
\$C	+254

Sire Sitz Incentive 704H MGS S A V Bismarck 5682



\*20805112

CED	+14
BW	+0.3
WW	+82
YW	+155
MILK	+26
MARB	+0.19
RE	+1.40
FAT	+0.005
SM	+58
SW	+72
\$F	+111
\$G	+35
\$B	+147
\$C	+249

Sire HA Scale Boss H677 MGS HA Value Added 7578



\*20805100

CED	+7
BW	+2.0
WW	+73
YW	+137
MILK	+24
MARB	+0.31
RE	+0.64
FAT	-0.007
SM	+36
SW	+58
\$F	+109
\$G	+37
\$B	+146
\$C	+225

Sire S A V Bloodline 9578 MGS S A V Final Answer 0035



\*20805109

CED	+6
BW	+0.7
WW	+83
YW	+142
MILK	+22
MARB	+0.55
RE	+0.61
FAT	+0.042
SM	+89
SW	+80
\$F	+81
\$G	+45
\$B	+126
\$C	+252

Sire Sitz Resilient 10208 MGS HA Cowboy Kind 8157



\*20805063

CED	+11
BW	+0.7
WW	+86
YW	+151
MILK	+33
MARB	+1.24
RE	+1.00
FAT	+0.057
SM	+67
SW	+86
\$F	+110
\$G	+84
\$B	+195
\$C	+320

Sire LAR Man In Black MGS Spring Cove Reno 4021



Contact us for your Sale Book!

HinmanAngus@hotmail.com

Billy & Heidi Luloff  
Billy's cell 406-654-4669

PO Box 220 • Malta, MT 59538

Tyler & Sascha Luloff  
Tyler's cell 406-654-4609

**HinmanAngus.com**

Dave & Yvonne Hinman  
406-654-1809

Dave's cell 406-654-4656

*Bulls that will keep you in the Cow Business!*